

University of Nebraska - Lincoln

DigitalCommons@University of Nebraska - Lincoln

---

Insecta Mundi

Center for Systematic Entomology, Gainesville,  
Florida

---

3-7-2013

***Pseudocoelotrachelus* new genus of Neotropical Aphodiini with descriptions of two new species (Coleoptera: Scarabaeidae: Aphodiinae)**

Marco Dellacasa

*Museo di Storia Naturale e del Territorio, Università di Pisa, dellacasa@museo.unipi.it*

Giovanni Dellacasa

*Genova, Italy, dellacasag@alice.it*

Robert D. Gordon

*Northern Plains Entomology, Willow City, ND 58384, rdgordon@utma.com*

Follow this and additional works at: <https://digitalcommons.unl.edu/insectamundi>

---

Dellacasa, Marco; Dellacasa, Giovanni; and Gordon, Robert D., "*Pseudocoelotrachelus* new genus of Neotropical Aphodiini with descriptions of two new species (Coleoptera: Scarabaeidae: Aphodiinae)" (2013). *Insecta Mundi*. 794.

<https://digitalcommons.unl.edu/insectamundi/794>

This Article is brought to you for free and open access by the Center for Systematic Entomology, Gainesville, Florida at DigitalCommons@University of Nebraska - Lincoln. It has been accepted for inclusion in Insecta Mundi by an authorized administrator of DigitalCommons@University of Nebraska - Lincoln.

# INSECTA MUNDI

A Journal of World Insect Systematics

---

0287

*Pseudocoelotrachelus* new genus of Neotropical Aphodiini with  
descriptions of two new species (Coleoptera: Scarabaeidae: Aphodiinae)

Marco Dellacasa  
Museo di Storia Naturale e del Territorio  
Università di Pisa  
Via Roma, 79  
I-56011 Calci (Pisa), Italy

Giovanni Dellacasa  
Via Talamone 31/19  
I-16127 Genova, Italy

Robert D. Gordon  
Northern Plains Entomology  
P.O. Box 65  
Willow City, ND 58384 USA

Date of Issue: March 8, 2013

Marco Dellacasa, Giovanni Dellacasa, and Robert D. Gordon  
*Pseudocoelotrachelus* new genus of Neotropical Aphodiini with descriptions of two  
new species (Coleoptera: Scarabaeidae: Aphodiinae)  
Insecta Mundi 0286: 1-5

ZooBank Registered: urn:lsid:zoobank.org:pub:0BEF5958-8EA5-45FC-8679-43B54ED77E52

**Published in 2013 by**

Center for Systematic Entomology, Inc.  
P. O. Box 141874  
Gainesville, FL 32614-1874 USA  
<http://www.centerforsystematicentomology.org/>

**Insecta Mundi** is a journal primarily devoted to insect systematics, but articles can be published on any non-marine arthropod. Topics considered for publication include systematics, taxonomy, nomenclature, checklists, faunal works, and natural history. **Insecta Mundi** will not consider works in the applied sciences (i.e. medical entomology, pest control research, etc.), and no longer publishes book reviews or editorials. **Insecta Mundi** publishes original research or discoveries in an inexpensive and timely manner, distributing them free via open access on the internet on the date of publication.

**Insecta Mundi** is referenced or abstracted by several sources including the Zoological Record, CAB Abstracts, etc. **Insecta Mundi** is published irregularly throughout the year, with completed manuscripts assigned an individual number. Manuscripts must be peer reviewed prior to submission, after which they are reviewed by the editorial board to ensure quality. One author of each submitted manuscript must be a current member of the Center for Systematic Entomology. Manuscript preparation guidelines are available at the CSE website.

**Managing editor:** Paul E. Skelley, e-mail: [insectamundi@gmail.com](mailto:insectamundi@gmail.com)

**Production editor:** Michael C. Thomas, Brian Armitage, Ian Stocks

**Editorial board:** J. H. Frank, M. J. Paulsen

**Subject editors:** G.B. Edwards, J. Eger, A. Rasmussen, F. Shockley, G. Steck, Ian Stocks, A. Van Pelt, J. Zaspel

**Spanish editors:** Julieta Brambila, Angélico Asenjo

**Printed copies (ISSN 0749-6737) annually deposited in libraries:**

CSIRO, Canberra, ACT, Australia  
Museu de Zoologia, São Paulo, Brazil  
Agriculture and Agrifood Canada, Ottawa, ON, Canada  
The Natural History Museum, London, Great Britain  
Muzeum i Instytut Zoologiczny PAN, Warsaw, Poland  
National Taiwan University, Taipei, Taiwan  
California Academy of Sciences, San Francisco, CA, USA  
Florida Department of Agriculture and Consumer Services, Gainesville, FL, USA  
Field Museum of Natural History, Chicago, IL, USA  
National Museum of Natural History, Smithsonian Institution, Washington, DC, USA  
Zoological Institute of Russian Academy of Sciences, Saint-Petersburg, Russia

**Electronic copies (On-Line ISSN 1942-1354, CDROM ISSN 1942-1362) in PDF format:**

Printed CD or DVD mailed to all members at end of year. Archived digitally by Portico.  
Florida Virtual Campus: <http://purl.fcla.edu/fcla/insectamundi>  
University of Nebraska-Lincoln, Digital Commons: <http://digitalcommons.unl.edu/insectamundi/>  
Goethe-Universität, Frankfurt am Main: <http://edocs.ub.uni-frankfurt.de/volltexte/2010/14363/>

**Author instructions** available on the Insecta Mundi page at:

<http://www.centerforsystematicentomology.org/insectamundi/>

Copyright held by the author(s). This is an open access article distributed under the terms of the Creative Commons, Attribution Non-Commercial License, which permits unrestricted non-commercial use, distribution, and reproduction in any medium, provided the original author(s) and source are credited. <http://creativecommons.org/licenses/by-nc/3.0/>

*Pseudocoelotrachelus* new genus of Neotropical Aphodiini with descriptions of two new species (Coleoptera: Scarabaeidae: Aphodiinae)

Marco Dellacasa

Museo di Storia Naturale e del Territorio, Università di Pisa

Via Roma, 79

I-56011 Calci (Pisa), Italy

dellacasa@museo.unipi.it

Giovanni Dellacasa

Via Talamone 31/19

I-16127 Genova, Italy

dellacasag@alice.it

Robert D. Gordon

Northern Plains Entomology

P.O. Box 65

Willow City, ND 58384 USA

rdgordon@utma.com

**Abstract.** The **new genus** *Pseudocoelotrachelus* (Coleoptera: Scarabaeidae: Aphodiinae) is diagnosed and the **new species** *Pseudocoelotrachelus peckorum* from Argentina (Salta) and *P. tristaobrancoi* from Mexico (Oaxaca) are described and figured.

**Key words.** Systematics, *Pseudocoelotrachelus* new genus, *P. peckorum* new species, *P. tristaobrancoi* new species, Argentina, Mexico, American Aphodiinae.

## Introduction

This work belongs to a series of papers describing new taxa in preparation for a systematic revision of Mexican Aphodiinae (Coleoptera: Scarabaeidae).

## Materials and Methods

Terminology used in this work to describe morpho-anatomical features follows that of Dellacasa et al. (2001). Materials studied are in the following collections:

**CMNO** – Canadian Museum of Nature, Ottawa, Canada

**DCGI** – Dellacasa Collection, Genoa, Italy

**FSCA** – Florida State Collection of Arthropods, Gainesville, Florida, U.S.A.

## Genus *Pseudocoelotrachelus* new genus

**Type species.** *Pseudocoelotrachelus tristaobrancoi* new species, here designated.

**Description.** Rather small species (length 5.0-5.5 mm); oval elongate, moderately convex, shiny, glabrous. Piceous or reddish brown. Head with epistome gibbous, finely and sparsely punctured; clypeus slightly sinuate at middle, distinctly denticulate or subangulate at sides, genae protruding from the eyes; frontal suture not tuberculate. Pronotum transverse, moderately convex, simply or dually, rather coarsely punctured; lateral margins almost straight, S-shaped before hind angles; latter obtusely round; base not bordered. Scutellum small, narrowly triangular. Elytra elongate, strongly denticulate at shoulder, finely striate; striae more or less distinctly punctured, feebly crenulate; interstriae moderately convex or al-

most flat, sparsely finely punctured. Fore tibiae distally tridentate and proximally serrulate at outer margin; upper side rather densely coarsely punctured. Hind tibiae with very feeble transverse carinae on outer face, apically fimbriate with progressively unequal spinules. Pygidium very densely and coarsely punctured, punctures setose, pubescence recumbent toward apex; latter with few straight and elongate setae. Sexual dimorphism shown in males by more transverse and less convex pronotum and by the metasternal plate relatively more distinctly excavate. Aedeagus with parameres elongate, feebly curved, acuminate and distinctly pubescent apically. Epipharynx inwardly sinuate at middle of anterior margin, round at sides; epitorma drop-shaped or campaniform; corypha with two strong and curved apical celtes protruding from the front margin; pedia pubescent with two lateral subregular series of few elongate spinules; chaetopariae moderately elongate, not very closely arranged.

**Distribution.** Neotropical region.

**Etymology.** The name is a combination of the prefix *pseudo*- [= false] and the genus name *Coelotrachelus*. The gender is masculine.

**Discussion.** The primary characteristics of *Pseudocoelotrachelus*, new genus, are:

- scutellum small, triangular;
- hind tibiae apically fimbriate with unequal spinules;
- pronotum lateral margins S-shaped before hind angles;
- aedeagus with parameres pubescent apically;
- epipharynx with two strong apical celtes protruding from the anterior margin.

The new genus is similar to *Coelotrachelus* Schmidt, 1913, but is easily distinguished from it by the strongly differing epipharyngeal shape, fore tibiae proximally serrulate at outer margin with dorsal surface coarsely and densely punctured, hind tibiae with very feeble transverse carinae at outer face and apex fimbriate with progressively unequal spinules. *Pseudocoelotrachelus* falls after couplet 60 in the key to genera of Aphodiini by Dellacasa et al. (2001) that must be modified as follows:

- 60a. Epipharynx with corypha protruding frontward and with a clump of several stout celtes; aedeagus with parameres glabrous apically. Protibia not densely punctate on dorsal surface. Length 7.0-8.0 mm. Nearctic and Neotropical region ..... ***Coelotrachelus* Schmidt**
- Epipharynx with corypha not reaching the front margin and with two strong and curved apical celtes; aedeagus with parameres distinctly pubescent apically. Protibia densely punctate on dorsal surface. Length 5.0-5.5 mm. Neotropical region .. ***Pseudocoelotrachelus* new genus**

#### Key to species of *Pseudocoelotrachelus*

1. Clypeus angulate at sides of median sinuosity, pronotum dually punctured; elytral interstriae flat. Brownish-red. Length 5.0-5.5 mm. Mexico (Oaxaca) ..... ***P. tristaobrancoi* new species**
- Clypeus denticulate at sides of median sinuosity; pronotum evenly punctured; elytral interstriae moderately convex. Dark piceous. Length 5.0-5.5 mm. Argentina (Salta) ..... ***P. peckorum* new species**

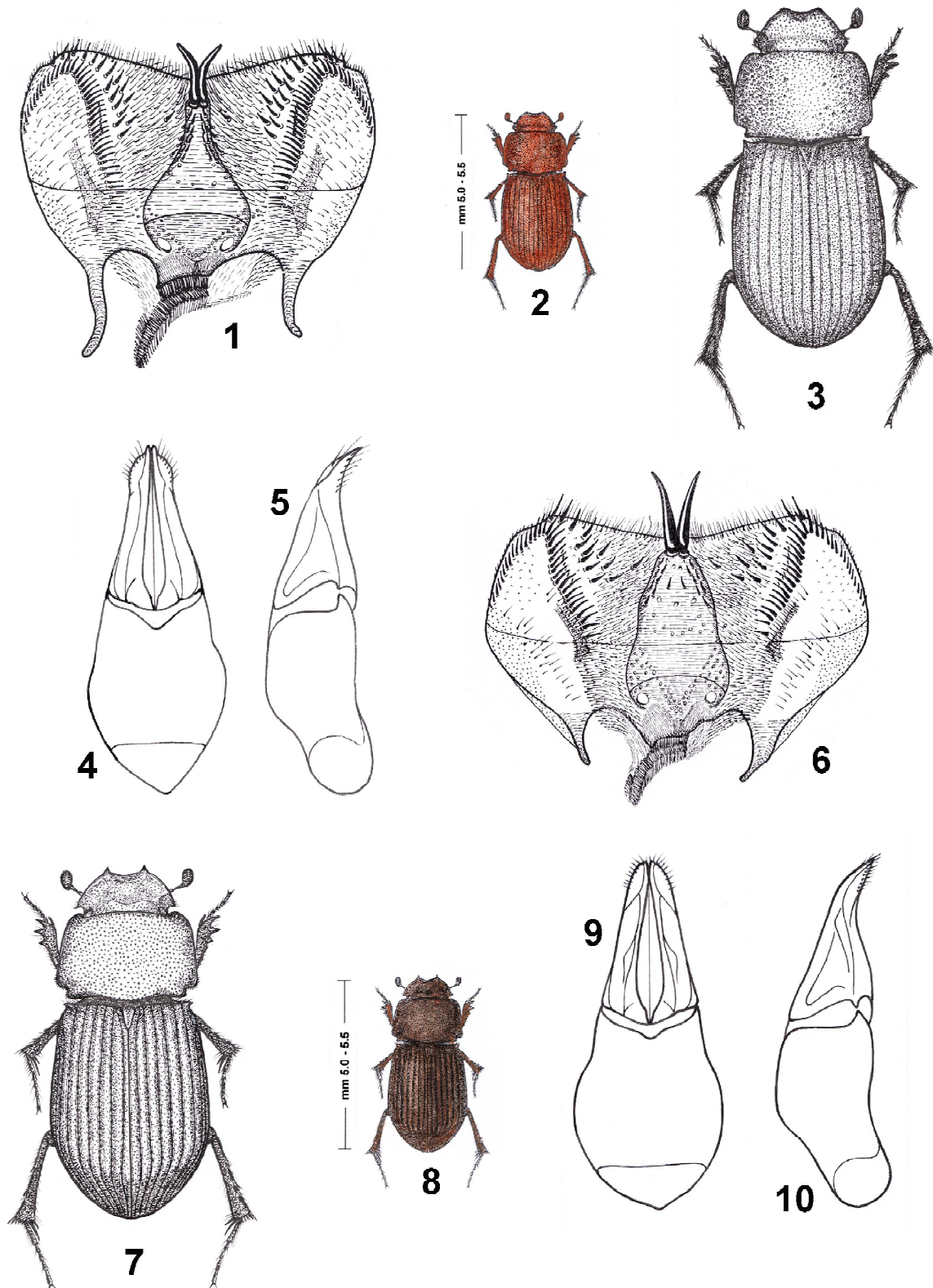
#### *Pseudocoelotrachelus tristaobrancoi* new species

(Fig. 1-5)

**Type locality.** La Venta env., 16°11'25.0"N-096°20'50.0"W, m 2467, Oaxaca, Mexico.

**Type repository.** Dellacasa Collection, Genoa, Italy.

**Description.** Length 5.0-5.5 mm; oblong, moderately convex, shiny, glabrous. Entirely reddish brown; antennal club testaceous. Head with epistome slightly gibbous on disc, antero-medially moderately de-



**Figures 1-10.** *Pseudocoelotrachelus tristaobrancoi* (La Venta env., 16°11'25.0"N-096°20'50.0"W, Oaxaca, Mexico). 1) Epipharynx. 2-3) Habitus (length ideogram and morphological details). 4-5) Aedeagus (dorsal and lateral view). *Pseudocoelotrachelus peckorum* (Pozo Verde Trail, km 7, El Rey Nat. Park, Salta, Argentina). 6) Epipharynx. 7-8) Habitus (length ideogram and morphological details). 9-10) Aedeagus (dorsal and lateral view).

pressed, evenly, rather finely, not closely punctured; punctation sparser and somewhat more superficial medially; clypeus broadly sinuate at middle, subangulate at sides, thinly bordered, edge slightly reflexed, glabrous; genae obtusely round, shortly bristled, protruding from the eyes; frontal suture almost obsolete; front evenly, finely, rather sparsely punctured. Pronotum transverse, few convex, dually, somewhat irregularly punctured; large coarse punctures, five to six times larger than small ones, denser on sides, lacking medially; small fine punctures evenly scattered throughout, somewhat finer and sparser on disc; lateral margins feebly arcuate, S-shaped before hind angles; latter obtusely round, almost imperceptibly bristled; base nearly straight, not bordered. Scutellum narrowly elongate, subdepressed laterally, finely punctured medially. Elytra elongate, slightly broadened posteriorly, strongly denticulate at shoulder, finely striate; striae superficially not closely punctured, not crenulate; interstriae almost flat, superficially alutaceous, evenly, rather densely, finely punctured. Hind tibiae superior apical spur shorter than first tarsal segment; latter longer than following three segments combined. Male: pronotum relatively more transverse and less convex; metasternal plate excavate; aedeagus Fig. 4-5. Female: pronotum relatively less transverse and more convex; metasternal plate almost flat.

**Type material. MEXICO: Oaxaca:** La Venta env., 16°11'25.0"N-096°20'50.0"W, m 2467, 28.VI.2007, leg. Dellacasa M., Fresi C. & Martínez I. (**holotype**, male, and **allotype** DCGI, 1 paratype, FSCA).

**Distribution.** Known from the type locality only.

**Etymology.** Named in honor of our dear friend and colleague Tristão Branco, Portuguese scarabaeidologist.

**Bionomics.** Almost unknown. Specimens of the type series were collected in June.

***Pseudocoelotrachelus peckorum* new species**  
(Fig. 6-10)

**Type locality.** Pozo Verde Trail, km 7, El Rey Nat. Park, m 1000, Salta Prov., Argentina.

**Type repository.** Canadian Museum of Nature, Ottawa, Canada.

**Description.** Length 5.0-5.5 mm; oblong, moderately convex, shiny, glabrous. Dark piceous; clypeal margin and pronotum sides shadowy reddish brown; legs and antennal club piceous. Head with epistome feebly gibbous medially, anteriorly with vestiges of arcuate transverse carina; finely sparsely punctured, punctation more superficial distally; clypeus slightly sinuate at middle, distinctly denticulate at sides, denticles moderately reflexed, very thinly bordered, edge glabrous; genae acutely angulate, shortly ciliate, strongly protruding from the eyes; frontal suture finely impressed; front subregularly punctured, punctation somewhat coarser than on epistome. Pronotum feebly transverse, moderately convex, rather closely, simply and subregularly punctured; lateral margins almost straight, very thinly bordered, edge glabrous, S-shaped before hind angles; latter obtusely round and very shortly bristled; base slightly bisinuate, not bordered. Scutellum finely sparsely punctured on basal half. Elytra feebly broadened posteriorly, strongly denticulate at shoulder, rather deeply striate; striae feebly crenulate; interstriae moderately convex, finely and sparsely punctured. Hind tibiae superior apical spur shorter than first tarsal segment; latter somewhat longer than following three segments combined. Male: metasternal plate moderately excavate and with superficial median longitudinal groove; aedeagus Fig. 9-10. Female: metasternal plate almost flat, only with trace of median longitudinal groove.

**Type material. ARGENTINA:** Salta Prov., Pozo Verde Trail, km 7, El Rey Nat. Park, m 1000, 9-15.XII.1987, leg. S. & J. Peck, dung trap, Yungas forest (**holotype**, male, **allotype** CMNO; 1 paratype, DCGI).

**Distribution.** Known from the type locality only.

**Etymology.** Named in honor of its collectors, Stewart and Jarmila Peck.

**Bionomics.** The specimens of the type series were collected in December in Yungas forest by dung traps (labels data).

### **Acknowledgments**

Thanks are due to P. Bouchard (Ottawa) for loan of material and to P. Bordat (Saint-Cirq) and M. Rakovic (Prague) for critical reviews of the manuscript.

### **Literature Cited**

**Dellacasa, G., P. Bordat, and M. Dellacasa. 2001.** A revisional essay of world genus-group taxa of Aphodiinae. *Memorie della Società Entomologica Italiana* [2000] 79: 1-482.

**Received November 13, 2012; Accepted February 3, 2013.**



