

University of Nebraska - Lincoln

DigitalCommons@University of Nebraska - Lincoln

Insecta Mundi

Center for Systematic Entomology, Gainesville,
Florida

10-25-2013

The genus *Sipha* Passerini (Hemiptera: Aphididae) in North America

Susan E. Halbert

Florida Department of Agriculture and Consumer Services, Susan.Halbert@freshfromflorida.com

Gary L. Miller

USDA-ARS, Beltsville, MD, Gary.Miller@ars.usda.gov

Lisa M. Ames

University of Georgia, lames@griffin.uga.edu

Follow this and additional works at: <https://digitalcommons.unl.edu/insectamundi>

Halbert, Susan E.; Miller, Gary L.; and Ames, Lisa M., "The genus *Sipha* Passerini (Hemiptera: Aphididae) in North America" (2013). *Insecta Mundi*. 831.

<https://digitalcommons.unl.edu/insectamundi/831>

This Article is brought to you for free and open access by the Center for Systematic Entomology, Gainesville, Florida at DigitalCommons@University of Nebraska - Lincoln. It has been accepted for inclusion in Insecta Mundi by an authorized administrator of DigitalCommons@University of Nebraska - Lincoln.

INSECTA MUNDI

A Journal of World Insect Systematics

0326

The genus *Sipha* Passerini (Hemiptera: Aphididae) in North America

Susan E. Halbert

Florida Department of Agriculture and Consumer Services

Division of Plant Industry

P.O. Box 147100

Gainesville, FL 32614-7100

Gary L. Miller

Room 017

10300 Baltimore Avenue

Bldg 005 BARC-West

Beltsville, MD 20705

Lisa M. Ames

College of Agricultural and Environmental Sciences

University of Georgia

1109 Experiment Street, Cowart Building

Griffin, GA 30223

Date of Issue: October 25, 2013

Susan E. Halbert, Gary L. Miller, and Lisa M. Ames
The genus *Sipha* Passerini (Hemiptera: Aphididae) in North America
Insecta Mundi 0326: 1-6

ZooBank Registered: urn:lsid:zoobank.org:pub:17F95C04-FA0A-4237-BA90-DF714EE17EBE

Published in 2013 by

Center for Systematic Entomology, Inc.
P. O. Box 141874
Gainesville, FL 32614-1874 USA
<http://www.centerforsystematicentomology.org/>

Insecta Mundi is a journal primarily devoted to insect systematics, but articles can be published on any non-marine arthropod. Topics considered for publication include systematics, taxonomy, nomenclature, checklists, faunal works, and natural history. **Insecta Mundi** will not consider works in the applied sciences (i.e. medical entomology, pest control research, etc.), and no longer publishes book reviews or editorials. **Insecta Mundi** publishes original research or discoveries in an inexpensive and timely manner, distributing them free via open access on the internet on the date of publication.

Insecta Mundi is referenced or abstracted by several sources including the Zoological Record, CAB Abstracts, etc. **Insecta Mundi** is published irregularly throughout the year, with completed manuscripts assigned an individual number. Manuscripts must be peer reviewed prior to submission, after which they are reviewed by the editorial board to ensure quality. One author of each submitted manuscript must be a current member of the Center for Systematic Entomology. Manuscript preparation guidelines are available at the CSE website.

Managing editor: Eugenio H. Nearn, e-mail: insectamundi@gmail.com

Production editor: Paul Skelley, Michael C. Thomas, Brian Armitage, Ian Stocks

Editorial board: J. H. Frank, M. J. Paulsen

Subject editors: G.B. Edwards, J. Eger, A. Rasmussen, G. Steck, Ian Stocks, A. Van Pelt, J. Zaspel

Spanish editors: Julieta Brambila, Angélico Asenjo

Printed copies (ISSN 0749-6737) annually deposited in libraries:

CSIRO, Canberra, ACT, Australia
Museu de Zoologia, São Paulo, Brazil
Agriculture and AgriFood Canada, Ottawa, ON, Canada
The Natural History Museum, London, Great Britain
Muzeum i Instytut Zoologii PAN, Warsaw, Poland
National Taiwan University, Taipei, Taiwan
California Academy of Sciences, San Francisco, CA, USA
Florida Department of Agriculture and Consumer Services, Gainesville, FL, USA
Field Museum of Natural History, Chicago, IL, USA
National Museum of Natural History, Smithsonian Institution, Washington, DC, USA
Zoological Institute of Russian Academy of Sciences, Saint-Petersburg, Russia

Electronic copies (On-Line ISSN 1942-1354, CDROM ISSN 1942-1362) in PDF format:

Printed CD or DVD mailed to all members at end of year. Archived digitally by Portico.
Florida Virtual Campus: <http://purl.fcla.edu/fcla/insectamundi>
University of Nebraska-Lincoln, Digital Commons: <http://digitalcommons.unl.edu/insectamundi/>
Goethe-Universität, Frankfurt am Main: <http://edocs.ub.uni-frankfurt.de/volltexte/2010/14363/>

Author instructions available on the *Insecta Mundi* page at:
<http://www.centerforsystematicentomology.org/insectamundi/>

Copyright held by the author(s). This is an open access article distributed under the terms of the Creative Commons, Attribution Non-Commercial License, which permits unrestricted non-commercial use, distribution, and reproduction in any medium, provided the original author(s) and source are credited. <http://creativecommons.org/licenses/by-nc/3.0/>

The genus *Sipha* Passerini (Hemiptera: Aphididae) in North America

Susan E. Halbert

Florida Department of Agriculture and Consumer Services

Division of Plant Industry

P.O. Box 147100

Gainesville, FL 32614-7100

Susan.Halbert@freshfromflorida.com

Gary L. Miller

10300 Baltimore Avenue

Bldg 005 BARC-West

Beltsville, MD 20705

Gary.Miller@ars.usda.gov

Lisa M. Ames

College of Agricultural and Environmental Sciences

University of Georgia

1109 Experiment Street, Cowart Building

Griffin, GA 30223

lames@griffin.uga.edu

Abstract. Five species of the aphid genus *Sipha* Passerini (Hemiptera: Aphididae) are reported in North America and are reviewed herein. Of these species, three are adventive species and include: *Sipha elegans* del Guercio, *Sipha glyceriae* (Kaltenbach), and *Sipha maydis* Passerini. *Sipha maydis* was discovered in California in 2007 and now has been found in Georgia. The genus also includes two native species: *Sipha agropyronensis* (Gillette) and *Sipha flava* (Forbes). *Sipha maydis* can be distinguished easily from all the other species in the genus that occur in North America because it is black. All the species except *S. agropyronensis* have been implicated in damage to crop plants. A key to the apterae and alatae of *Sipha* found in North America is included.

Key Words: *Sipha*, North America, *Sipha maydis*

Introduction

Sipha Passerini (Hemiptera: Aphididae) is a small genus of aphids that live on Gramineae, and possibly also on Juncaceae. Adults are characterized by having a spiny integument, short, truncate siphunculi, and five-segmented antennae. Five species of *Sipha* are reported from North America. Three species belong to the subgenus *Sipha* and two species belong to the subgenus *Rungsia* Mimeur. Three are adventive and two are native. *Sipha maydis* Passerini 1860 was detected in California in 2007 (Sorensen 2007). It also has been detected on wheat in a greenhouse in Georgia, and several phoretic winged *S. maydis* also were intercepted on produce from California at Agricultural Interdiction Stations in Florida. The purpose of this paper is to provide identification information for *Sipha* species in North America with emphasis on recognition of the newly adventive *S. maydis*, which can be a serious pest of cereals.

Materials and Methods

We examined slide mounted specimens of the various species from the United States National Museum (USNM) and from the Florida State Collection of Arthropods (FSCA). Specimens of *S. maydis* from Georgia, and specimens from California intercepted on lettuce at Florida Agricultural Interdiction Sta-

tions were assigned FSCA accession numbers, mounted on slides and deposited in the FSCA. FSCA numbers are interpreted as EYEAR-XXXX, where XXXX is the sequential accession number for that year.

***Sipha* Passerini (Hemiptera: Aphididae) in North America**

Species of *Sipha* can be distinguished from other species of aphids that feed on Gramineae by their spiny setae, very short siphunculi, short cauda, and their five-segmented antennae. A closely related genus, *Atheroides* Haliday, is represented by a single exotic species in British Columbia (Forbes and Chan 1989), Quebec (Richards 1972), and New Brunswick (Jensen et al. 2008), CANADA, and Montana, U.S.A. (Jensen et al. 2008). *Atheroides* can be separated from *Sipha* by its poriform siphunculi and long narrow body. One obscure genus on Gramineae, *Cryptaphis* Hille Ris Lambers, also has spiny setae, but the antennae are six-segmented, and the siphunculi are tubular.

Both subgenera of *Sipha* are represented in North America. Species placed in *Sipha sensu stricto* have knobbed caudas. In North America, these include our two native species, *Sipha agropyronensis* (Gillette 1911) and *Sipha flava* (Forbes 1884). The latter species, the yellow sugarcane aphid, is a significant pest on numerous grasses and cereal crops. A third species in the nominate subgenus, *Sipha glyceriae* (Kaltenbach 1843), was reported in North America in 1909 (Patch 1910). In other parts of the world, it is a serious pest of rice (Olmi and Villani 1975). So far, there are no observations of similar damage to the North American rice crop.

Species placed in *Sipha* (*Rungsia*) have short, unconstricted caudas. Both North American species in this subgenus are exotic. They include *Sipha* (*Rungsia*) *elegans* del Guercio 1905, which has been established at least since 1949 (Footitt et al. 2006), and the recently reported *S. maydis* (Sorensen 2007). Both species are known pests.

Biology of *Sipha* species

During the growing season, all individuals are parthenogenetic females. They can be winged or wingless. Known males (*S. flava*, *S. elegans*, and *S. glyceriae*) are apterous (Blackman and Eastop 2006). Males of *S. elegans* are much darker and have longer appendages than other apterous forms. Oviparae, but not males, are known for *S. agropyronensis* (Palmer 1952). Males and oviparae of *Sipha* spp. with known holocycles occur in the fall on grasses and cereal crops. There is no known host alternation to a woody winter host. Fundatrices of *S. elegans* are similar to summer apterae. In the tropics and subtropics, anholocyclic parthenogenetic forms persist throughout the year. Curiously, laboratory cultures of *S. elegans* in Idaho required natural sunlight to grow (observation by SEH). *Sipha flava* cultures in Florida also required natural sunlight (Matthew Hentz, USDA/ARS, Ft. Pierce, FL, personal communication, by permission).

Species discussion

***Sipha* (*Sipha*) *agropyronensis* (Gillette 1911) (Fig. 1)**

This is an obscure native species known from Colorado (Smith and Parron 1978; Palmer 1952), California and Montana (Jensen et al. 2008). It is characterized by its smooth body, and by a very short processus terminalis on the antennae (Palmer 1952; Blackman and Eastop 2006).

***Sipha* (*Sipha*) *flava* (Forbes 1884) (Fig 2–4, 17)**

This species is the well-known yellow sugarcane aphid (Fig. 2-4). It probably is native to North America, but has become established in Central and South America and in the Caribbean (Blackman and Eastop 2006). It was found in Hawaii in 1988 (Hall 2000), where it became a serious pest of pasture

grasses and sugarcane (Kindler and Dalrymple 1999). Schenk and Lehrer (2000) were unable to obtain transmission of Sugarcane Yellow Leaf Virus by this species. The processus terminalis is at least 1.8 times as long as the base of antennal segment VI, and the body is smooth. The long processus terminalis will separate this species from other North American *Sipha* (*Sipha*) species.

***Sipha* (*Sipha*) *glyceriae* (Kaltenbach 1843) (Fig. 5–7, 16)**

This species is a serious rice pest in the Palearctic region, where it is native (Olmi and Villani 1975). It causes dark brown feeding spots on the leaves (Fig. 5). It is very similar to *S. agropyronensis* but has denticles on the cuticle. Although *S. glyceriae* was reported in North America more than a century ago, it has not become a rice pest in North America. The Edith Patch Collection (currently housed in the Canadian National Collection, Ottawa) was examined to locate Patch's specimens of *S. glyceriae* for comparison. Unfortunately, no Patch specimens were found in the collection (R. Foottit, personal communication). Whether *Sipha glyceriae* constitutes a species complex, or whether host races occur, is not known. Re-collection of North America *S. glyceriae* for comparison with the Italian rice pest would be important to determine if they are conspecific.

***Sipha* (*Rungsia*) *elegans* del Guercio 1905 (Fig. 8–11)**

This is an Old World species that is well-established in the northern parts of the USA. It is common in the Pacific Northwest and can be found on various temperate grasses such as *Agropyron* spp. (Fig. 8) and also on wheat (Fig. 9). Colonies on wheat tend to occur later in the season after the plants bolt to produce a head. Sometimes the first colonization of wheat occurs in colonies of *Schizaphis graminum* (Rondani), which causes similar necrotic damage. It is a vector of the BYD virus complex (Jedlinski 1981). As is characteristic of the subgenus *Rungsia*, the cauda is not constricted. *Sipha elegans* is bright yellow in warm sunshine and olive green under cooler, more shaded conditions. It is distinguished easily from the dark brown or black *S. maydis*, the only other species in the subgenus that occurs in North America.

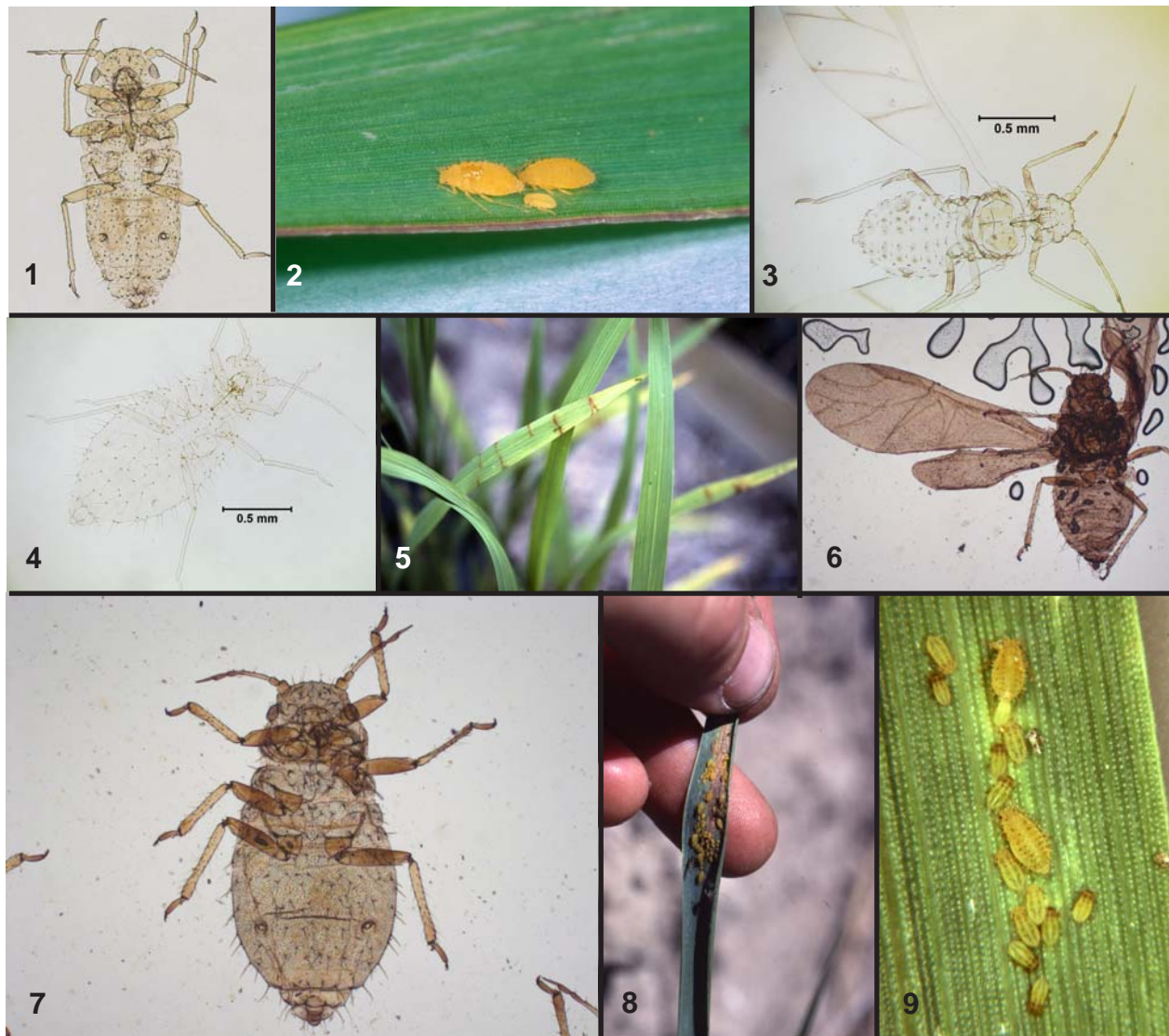
***Sipha* (*Rungsia*) *maydis* Passerini 1860 (Fig. 12–15)**

This species is known to be a pest of cereal crops, particularly in drier/warmer climates. It is reported to be a vector of the BYD virus complex (El Yamani and Hill 1991) and can cause direct feeding damage (Fig. 12–13). It is reported throughout the Mediterranean region, into Central and South Asia, South Africa, and South America (Blackman and Eastop 2000, 2006; Corrales et al. 2007). This species is recognized easily by its black color and completely sclerotized dorsum.

This species was discovered in North America in California in 2007 (Sorensen 2007). It was found in Georgia in November 2012 on wheat in a greenhouse (observation by LMA, FSCA# E2012-9123). *Sipha maydis* also has been intercepted at the Florida Agricultural Interdiction Stations as phoretic alatae on lettuce from California in 2011 and 2012 (FSCA#s E2011-5477, E2012-3133, E2012-3195). The New World and African records indicate that this species probably moves readily in commerce.

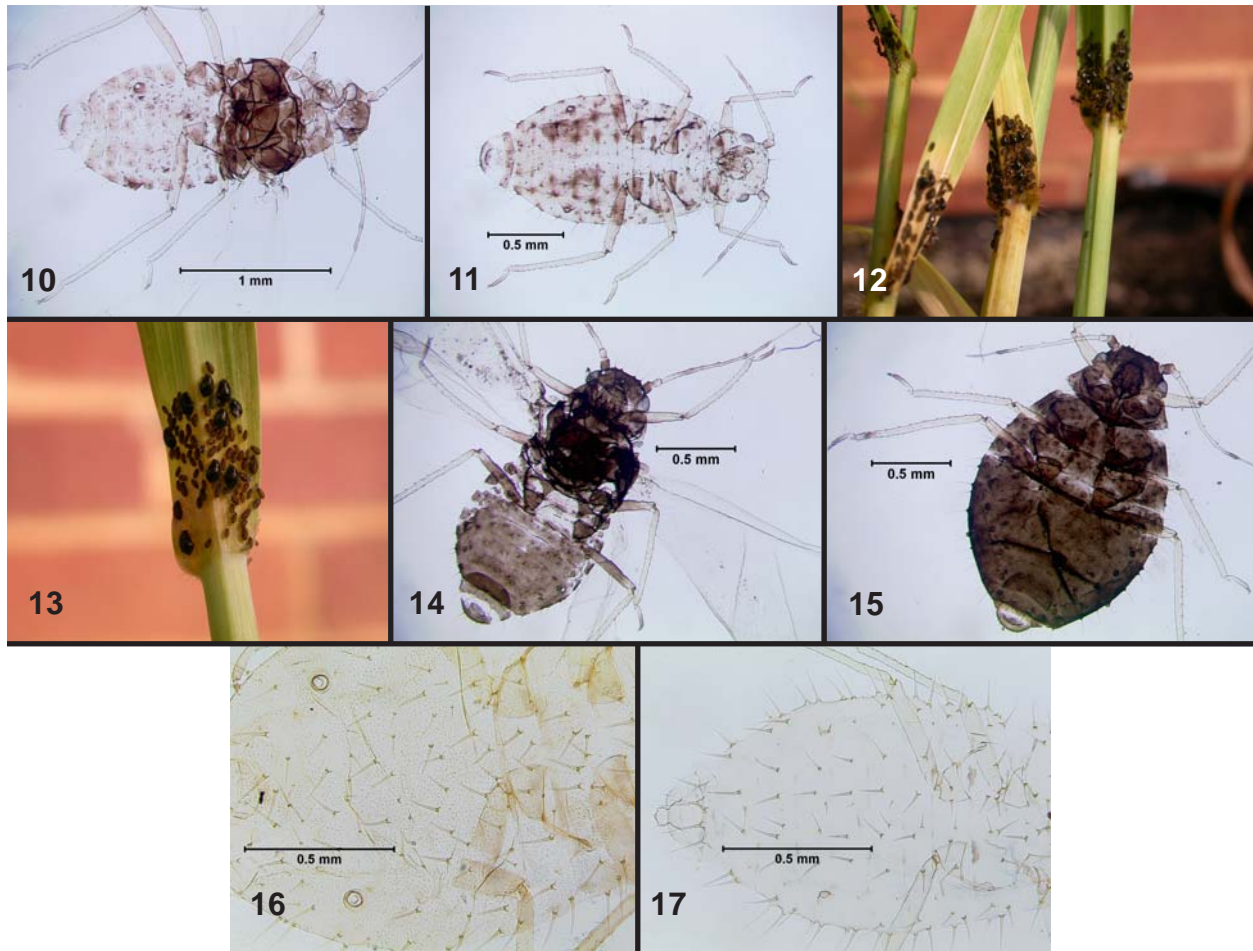
Key to *Sipha* species in North America.

1. Cauda knobbed (Fig. 3) (**subgenus *Sipha***) 2
- Cauda not knobbed (Fig. 11) (**subgenus *Rungsia***) 4
- 2(1). Body with denticles on the dorsum (Fig. 16) ***Sipha glyceriae* (Kaltenbach)**
- Body without denticles on the dorsum (Fig. 17) 3
- 3(2). Processus terminalis more than 1.5 times as long as the base of antennal segment VI (Fig. 3, 4) ***Sipha flava* (Forbes)**
- Processus terminalis less than 1.5 times as long as the base of antennal segment VI (Fig. 1) ...
- ***Sipha agropyronensis* (Gillette)**



Figures 1-9. 1) Slide mounted *Sipha agropyronensis* (Gillette). Photograph: Gary Miller. 2) Colony of *Sipha flava* (Forbes). Photograph: David J. Voegtlin, Illinois Natural History Survey, Champaign, IL. 3) Slide mounted *Sipha flava* (Forbes) alate. Photograph: Susan Halbert and Lyle J Buss, University of Florida, Gainesville. 4) Slide mounted *Sipha flava* (Forbes) aptera. Photograph: Susan Halbert and Lyle J Buss, University of Florida, Gainesville. 5) Damage from *Sipha glyceriae* (Kaltenbach) on rice in Italy. Photograph: Susan Halbert. 6) Slide mounted *Sipha glyceriae* (Kaltenbach) alate from North America. Photograph: Gary Miller. 7) Slide mounted *Sipha glyceriae* (Kaltenbach) aptera from North America. Photograph: Gary Miller. 8) *Sipha elegans* del Guercio on *Agropyron* sp. in Idaho. Photograph: Susan Halbert. 9) *Sipha elegans* del Guercio on *Triticum aestivum* (wheat) in Idaho. Photograph: Susan Halbert and Guy W. Bishop, University of Idaho, emeritus.

- 4(1). Abdominal dorsum almost completely dark brown to black and sclerotic (Fig. 12-15) ***Sipha maydis* Passerini**
 — Abdominal dorsum at most with sclerotic patches under the setae (Fig. 8-11) ***Sipha elegans* de. Guercio**



Figures 10-17. 1) Slide mounted *Siphid elegans* del Guercio alate. Photograph: Susan Halbert and Lyle J Buss, University of Florida, Gainesville. 11) Slide mounted *Siphid elegans* del Guercio aptera. Photograph: Susan Halbert and Lyle J Buss, University of Florida, Gainesville. 12) Colony of ant -tended *Siphid maydis* Passerini on wheat. Photograph: Lisa M. Ames. 13) Close up of *Siphid maydis* Passerini colony with adults, immature stages, and feeding damage. Photograph: Lisa M. Ames. 14) Slide mounted *Siphid maydis* Passerini alate. Photograph: Susan Halbert and Lyle J Buss, University of Florida, Gainesville. 15) Slide mounted *Siphid maydis* Passerini aptera. Photograph: Susan Halbert and Lyle J Buss, University of Florida, Gainesville. 16) Dorsum of *Siphid glyceriae* (Kaltenbach) from Europe, showing denticles. Photograph: Susan Halbert. 17) Dorsum of *Siphid flava* (Forbes) showing lack of denticles. Photograph: Susan Halbert.

Acknowledgments

We thank Guy W. Bishop, Emeritus, University of Idaho; Lyle J. Buss, University of Florida, Gainesville; and David J. Voegtlin, Illinois Natural History Survey, Champaign, IL, for photographs; Robert Footitt, Agriculture and Agri-Food Canada, Canadian National Collection of Insects, Ottawa, Ontario, for checking holdings in the Edith Patch Collection; and David Adamski, USDA, Systematic Entomology Laboratory, Beltsville, MD, David J. Voegtlin, Illinois Natural History Survey, Champaign, IL, and Paul E. Skelley, FSCA for reviewing the manuscript. This is Entomology Contribution No. 1249, Florida Department of Agriculture and Consumer Services, Division of Plant Industry, Bureau of Entomology, Nematology, and Plant Pathology. Mention of trade names or commercial products in this publication is solely for the purpose of providing specific information and does not imply recommendation or endorsement by the USDA. The USDA is an equal opportunity provider and employer.

Literature Cited

- Blackman, R. L., and V. F. Eastop. 2000.** Aphids on the world's crops, Second Edition. John Wiley & Sons; Chichester, England. 466 p.
- Blackman, R. L., and V. F. Eastop. 2006.** Aphids on the world's herbaceous plants and shrubs, Volumes 1 and 2. John Wiley & Sons; Chichester, England. 1439 p.
- Corrales, C. E., A. M. Castro, M. Ricci, and A. F. G. Dixon. 2007.** *Sipha maydis*: Distribution and host range of a new aphid pest of winter cereals in Argentina. *Journal of Economic Entomology* 100: 1781–1788.
- del Guercio, G. 1905.** Contribuzione alla conoscenza delle *Sipha* Pass. *Redia Giornale di Entomologia* 2: 127–152; Pls xiii–xiv.
- El Yamani, M., and J. H. Hill. 1991.** Aphid vectors of barley yellow dwarf virus in west central Morocco. *Journal of Phytopathology* 133: 105–111.
- Footitt, R. G., S. E. Halbert, G. L. Miller, E. Maw, and L. M. Russell. 2006.** Adventive aphids (Hemiptera: Aphididae) of America north of Mexico. *Proceedings of the Entomological Society of Washington* 108: 583–610.
- Forbes, A. R., and C. K. Chan. 1989.** Aphids of British Columbia. Research Branch, Agriculture Canada. *Technical Bulletin* 1989-1E: 1–260.
- Forbes, S. A. 1884.** Thirteenth report of the State Entomologist on the noxious and beneficial insects of the state of Illinois, 1884. Annual Report of the State Entomologist of Illinois, second annual report of S.A. Forbes for the year 1883. Springfield, IL. 203+xxi p.
- Gillette, C. P. 1911.** A new genus and four new species of Aphididae (Rhynch.). *Entomological News* 22: 440–444; Pl xiv.
- Hall, D. G. 2000.** Notes on the yellow sugarcane aphid *Sipha flava* (Homoptera: Aphididae) and the lady beetle *Diomus terminatus* (Coleoptera: Coccinellidae) in Florida. *Journal of the American Society of Sugarcane Technologists* 21: 21–29.
- Jedlinski, H. 1981.** Rice root aphid, *Rhopalosiphum rufiabdominalis*, a vector of barley yellow dwarf virus in Illinois, and the disease complex. *Plant Disease* 65: 975–978.
- Jensen, A. S., G. L. Miller, and M. B. Stoetzel. 2008.** The Aphidoidea world wide web Page. <http://www.sel.barc.usda.gov/aphid/aphframe.htm> [Accessed 2 October 2013].
- Kaltenbach, J. H. 1843.** Monographie der Familien der Pflanzenläuse. (Phytophthires). P. Fagot; Aachen 1843: xliii+223 p; 1 pl.
- Kindler, S. D., and L. R. Dalrymple. 1999.** Relative susceptibility of cereals and pasture grasses to the yellow sugarcane aphid (Homoptera: Aphididae). *Journal of Agricultural and Urban Entomology* 16: 113–122.
- Olmi, M., and A. Villani. 1975.** Biologia del'afide italiano del riso *Sipha glyceriae* Kaltenbach e metodi di lotta. *Rivista Il Riso* 25: 59–71.
- Palmer, M. A. 1952.** Aphids of the Rocky Mountain Region. The Thomas Say Foundation, Hirschfeld Press; Denver. 452 p.
- Passerini, G. 1860.** Gli afidi con un prospetto dei generi ed alcune specie nuove Italiane. Tipografia Carmignani; Parma. 40 p.
- Patch, E. M. 1910.** Four rare aphid genera from Maine. *Maine Agricultural Experiment Station Bulletin* 182: 241–248.
- Richards, W. R. 1972.** The Chaitophorinae of Canada. *Memoirs of the Entomological Society of Canada* 87: 1–109.
- Schenck, S., and A. T. Lehrer. 2000.** Factors affecting the transmission and spread of Sugarcane Yellow Leaf Virus. *Plant Disease* 84: 1085–1088.
- Smith, C. F., and C. S. Parron. 1978.** An annotated list of Aphididae (Homoptera) of North America. North Carolina Agricultural Experiment Station Technical Bulletin No. 255: 1–428.
- Sorensen, J. T. 2007.** *Sipha maydis* Passerini: A new grass/cereal aphid in North America. Plant Pest Diagnostic Center, California Department of Food and Agriculture. 2 p. http://www.cdfa.ca.gov/plant/PPD/PDF/Sipha_maydis.pdf [Accessed 2 October 2013].

Received September 24, 2013; Accepted October 7, 2013.