

7-11-1978

Green Ranch Quadrangle, Lincoln County, Nebraska

Robert Diffendal Jr.

University of Nebraska - Lincoln, rdiffendal1@unl.edu

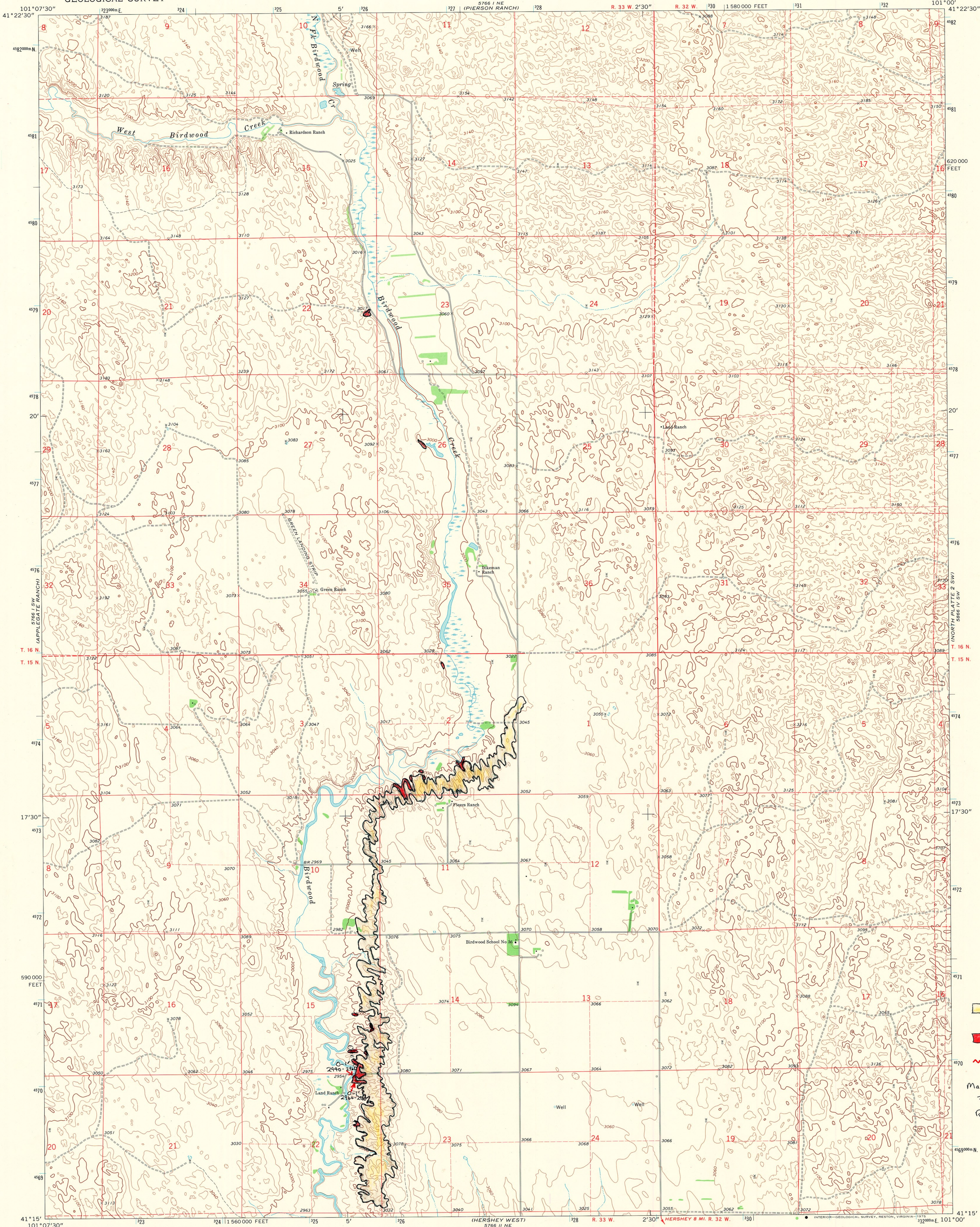
Follow this and additional works at: <http://digitalcommons.unl.edu/diffendal>



Part of the [Geology Commons](#), and the [Stratigraphy Commons](#)

Diffendal, Robert Jr., "Green Ranch Quadrangle, Lincoln County, Nebraska" (1978). *Robert F. Diffendal, Jr., Publications*. 13.
<http://digitalcommons.unl.edu/diffendal/13>

This Article is brought to you for free and open access by the Natural Resources, School of at DigitalCommons@University of Nebraska - Lincoln. It has been accepted for inclusion in Robert F. Diffendal, Jr., Publications by an authorized administrator of DigitalCommons@University of Nebraska - Lincoln.



□ = Post Ogallala
Sands & Gravel
w/ Anorthosite
■ = Ogallala Outcrop
— = Volcanic Ash

Map completed
7/11/78
R.F. Diffendal, Jr.