

University of Nebraska - Lincoln

**DigitalCommons@University of Nebraska - Lincoln**

---

SciComm 2016 - Lincoln, Nebraska, September  
23-24, 2016

SciComm - Effective Science Communication

---

8-24-2016

# How to Talk about Science in the Face of Religious Mistrust

Clay Farris Naff

*The Humanist Magazine*

Follow this and additional works at: <http://digitalcommons.unl.edu/scicomm2016>



Part of the [Life Sciences Commons](#), [Medicine and Health Sciences Commons](#), [Other Communication Commons](#), and the [Science and Technology Studies Commons](#)

---

Naff, Clay Farris, "How to Talk about Science in the Face of Religious Mistrust" (2016). *SciComm 2016 - Lincoln, Nebraska, September 23-24, 2016*. 17.

<http://digitalcommons.unl.edu/scicomm2016/17>

This Presentation is brought to you for free and open access by the SciComm - Effective Science Communication at DigitalCommons@University of Nebraska - Lincoln. It has been accepted for inclusion in SciComm 2016 - Lincoln, Nebraska, September 23-24, 2016 by an authorized administrator of DigitalCommons@University of Nebraska - Lincoln.



# How to Talk about Science in the Face of Religious Mistrust



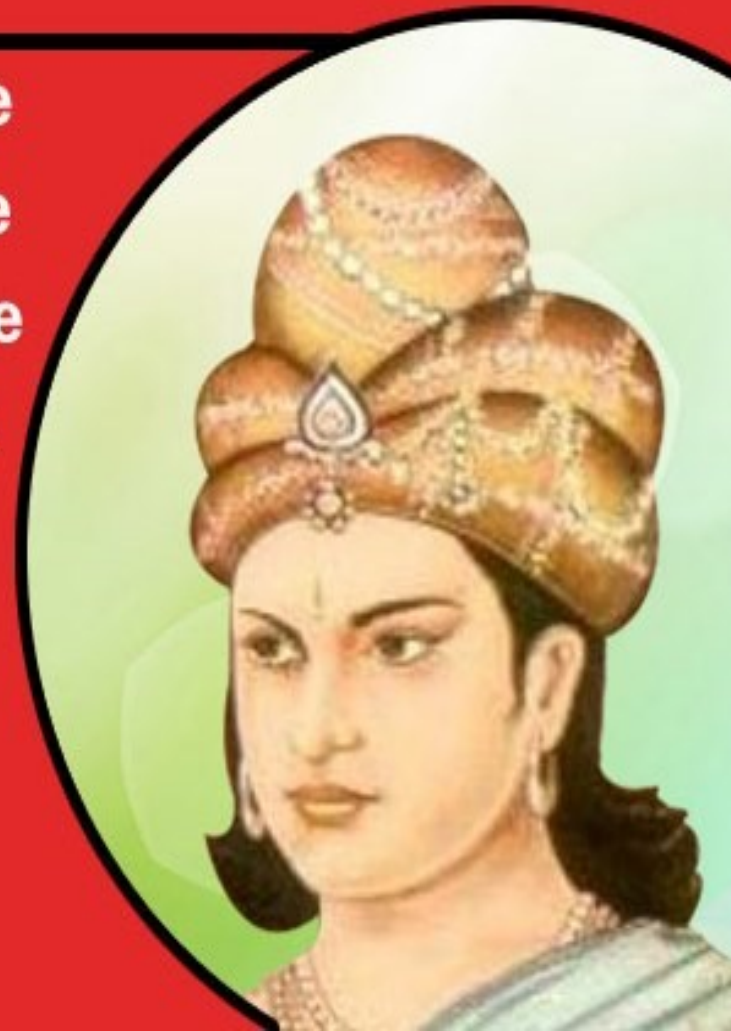
Clay Farris Naff

Science & Religion Correspondent,  
The Humanist Magazine,  
Author of *Free God Now!*

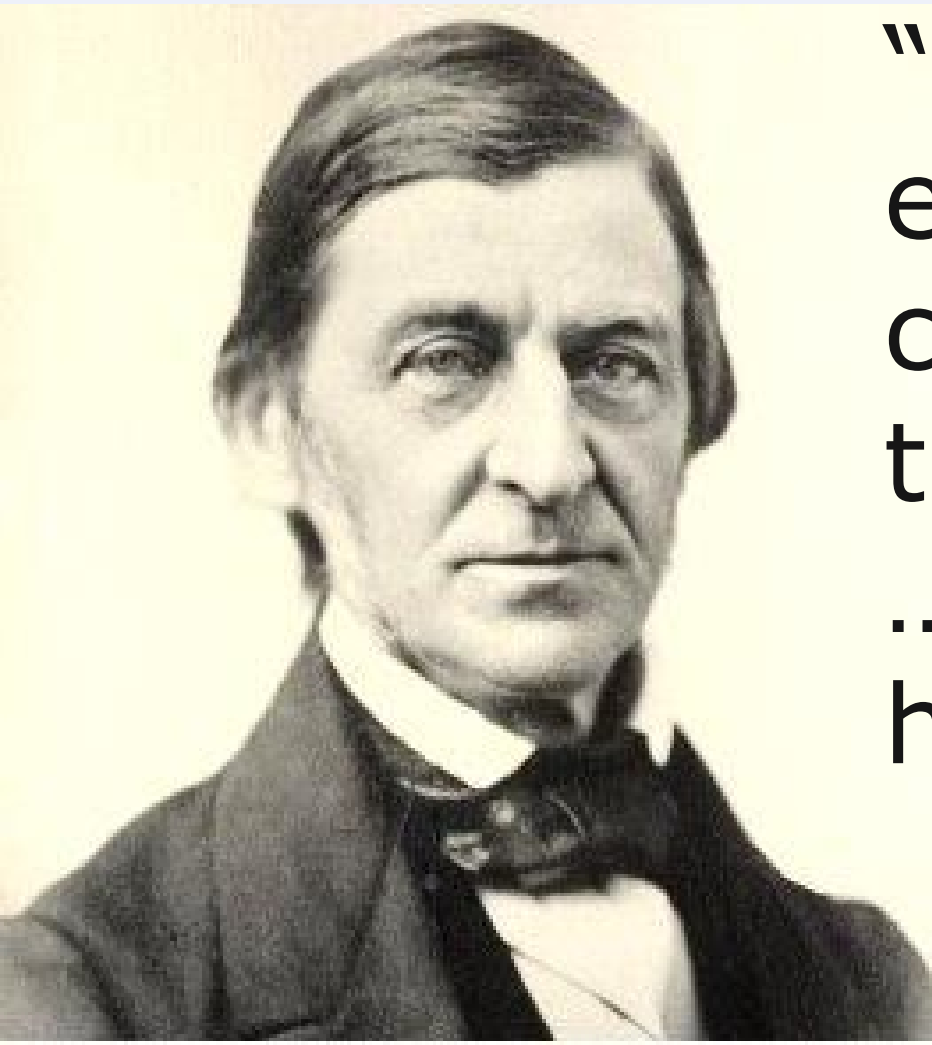
# King Ashoka (268 to 232 BCE)

## Respecting all religions

Every religion has the wholesome core of love, compassion and good will. The outer shell differs, but give importance to the inner essence and there will be no quarrel. Don't condemn anything, give importance to the essence of every religion and there will be real peace and harmony.



# Ralph Waldo Emerson



"God offers to every mind its choice between truth and repose. ...You can never have both."

**"GEE, THERE ARE SO MANY GODS. WHAT  
HAPPENS IF WE BELIEVE IN THE WRONG ONE?"**

A cartoon image of Homer Simpson from The Simpsons. He is shown from the chest up, sitting on a red couch. He has a thoughtful expression, with his hand resting on his chin and his eyes looking slightly to the side. He is wearing a light blue short-sleeved shirt. The background shows a green lawn, a brown fence, and a green house with a blue roof.

**"EVERY TIME WE GO TO CHURCH WE JUST  
MAKE THE REAL ONE Madder AND Madder."**



# Us and THEM



# Timothy Gay, UNL Prof. of Physics



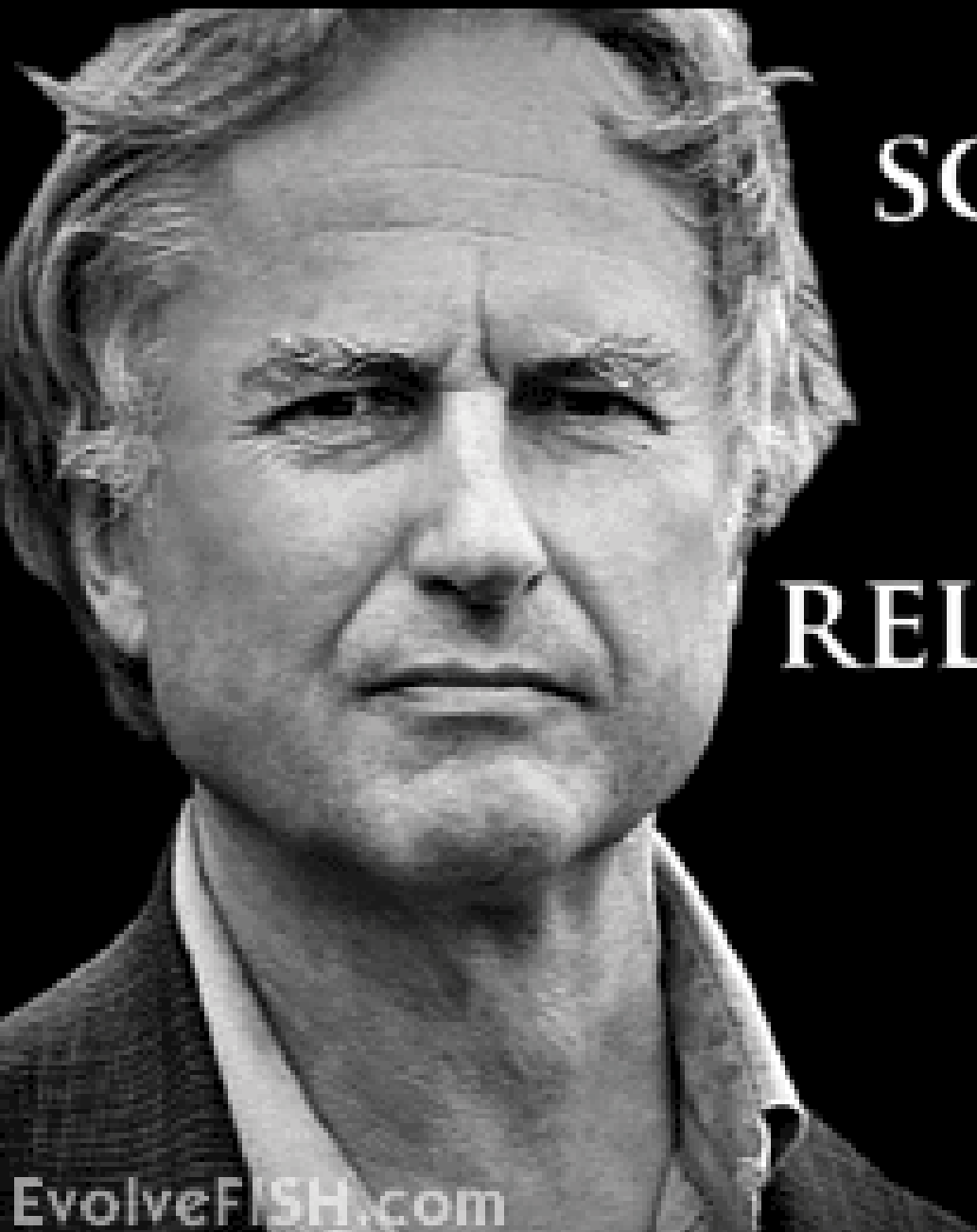
# Ken Miller, Prof. of Biology, Brown



Kenneth Miller  
Biologist

"Like many other scientists who hold the Catholic faith, I see the Creator's plan and purpose fulfilled in our universe. I see a planet bursting with evolutionary possibilities, a continuing creation in which the Divine providence is manifest in every living thing. I see a science that tells us there is indeed a design to life."





SCIENCE FLIES  
YOU TO THE  
MOON  
RELIGION FLIES  
YOU INTO  
BUILDINGS

- *Richard Dawkins*

BE NICE  
OR Be NEUTRAL!

EARTH  
IN  
SPACE

8th Word Wall

Jan

Revolver

Year

Revolver

Month

CALENDAR

Jan 1st	Jan 2nd	Jan 3rd
Jan 4th	Jan 5th	Jan 6th
Jan 7th	Jan 8th	Jan 9th
Jan 10th	Jan 11th	Jan 12th
Jan 13th	Jan 14th	Jan 15th
Jan 16th	Jan 17th	Jan 18th
Jan 19th	Jan 20th	Jan 21st
Jan 22nd	Jan 23rd	Jan 24th
Jan 25th	Jan 26th	Jan 27th
Jan 28th	Jan 29th	Jan 30th
Jan 31st		

Table of Contents  
Jan 1st  
Jan 2nd  
Jan 3rd  
Jan 4th  
Jan 5th  
Jan 6th  
Jan 7th  
Jan 8th  
Jan 9th  
Jan 10th  
Jan 11th  
Jan 12th  
Jan 13th  
Jan 14th  
Jan 15th  
Jan 16th  
Jan 17th  
Jan 18th  
Jan 19th  
Jan 20th  
Jan 21st  
Jan 22nd  
Jan 23rd  
Jan 24th  
Jan 25th  
Jan 26th  
Jan 27th  
Jan 28th  
Jan 29th  
Jan 30th  
Jan 31st

# Ken Ham, Answers in Genesis







THEM =

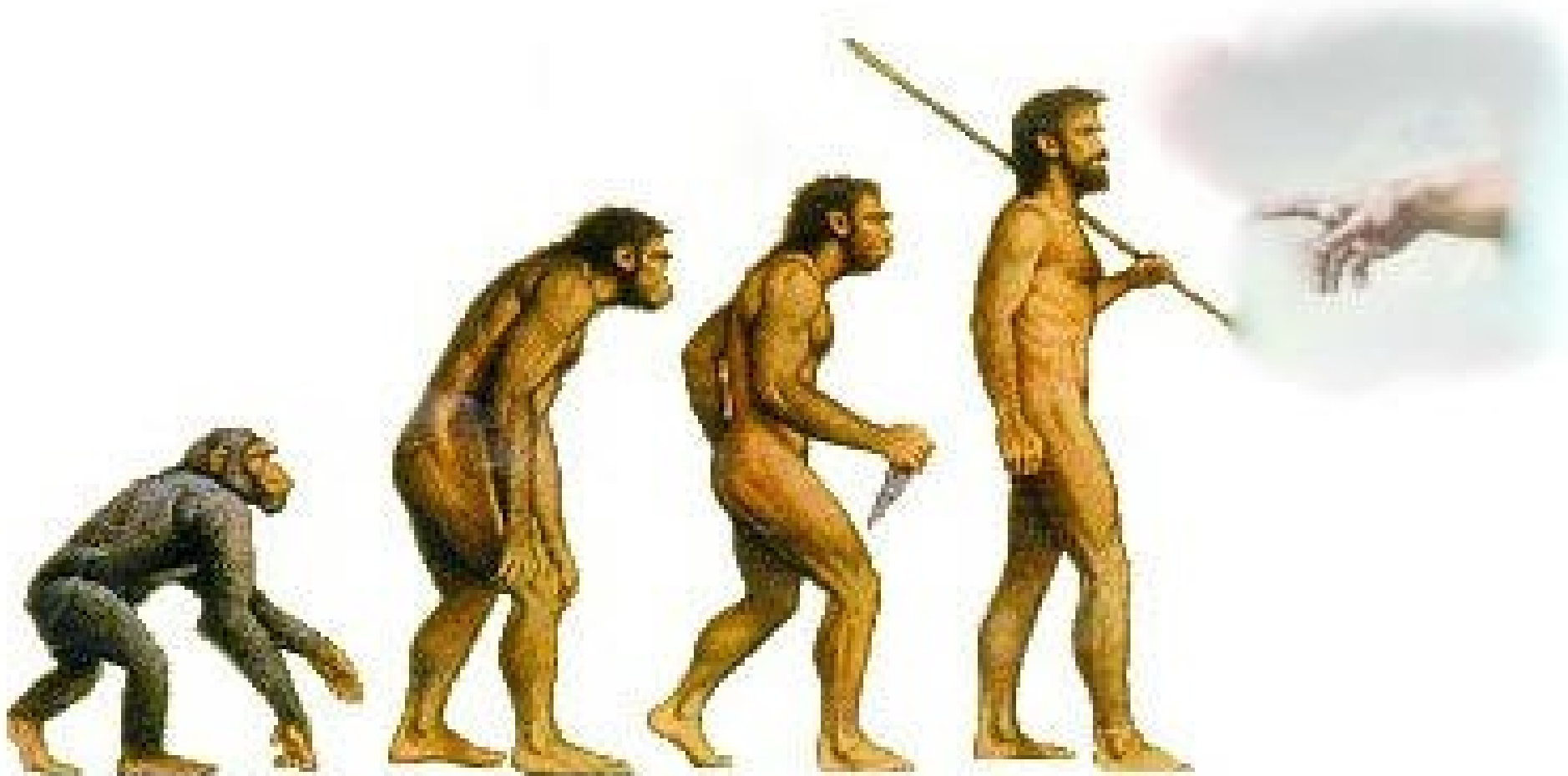
T<sup>r</sup>uthful

H<sup>u</sup>mble

E<sup>v</sup>idential

M<sup>e</sup>morable

# Theistic Evolution



# Human Babies Barely Fit

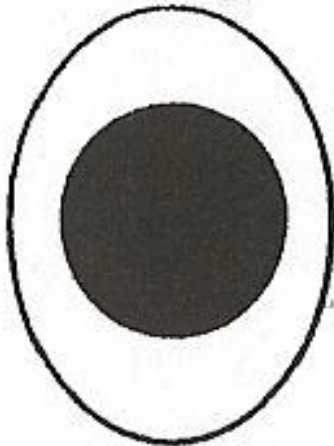
**Flexion**



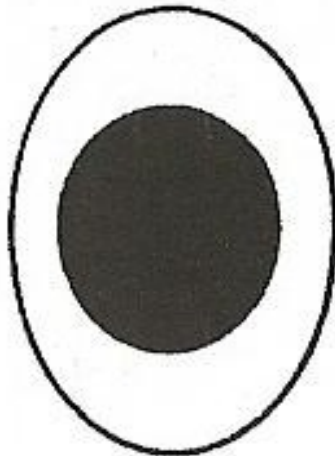
**Internal rotation of head**



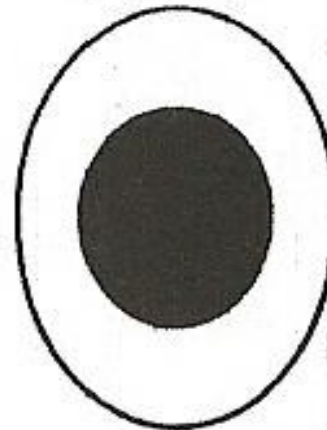
**Orang**



**Chimp**




**Gorilla**



**Human**

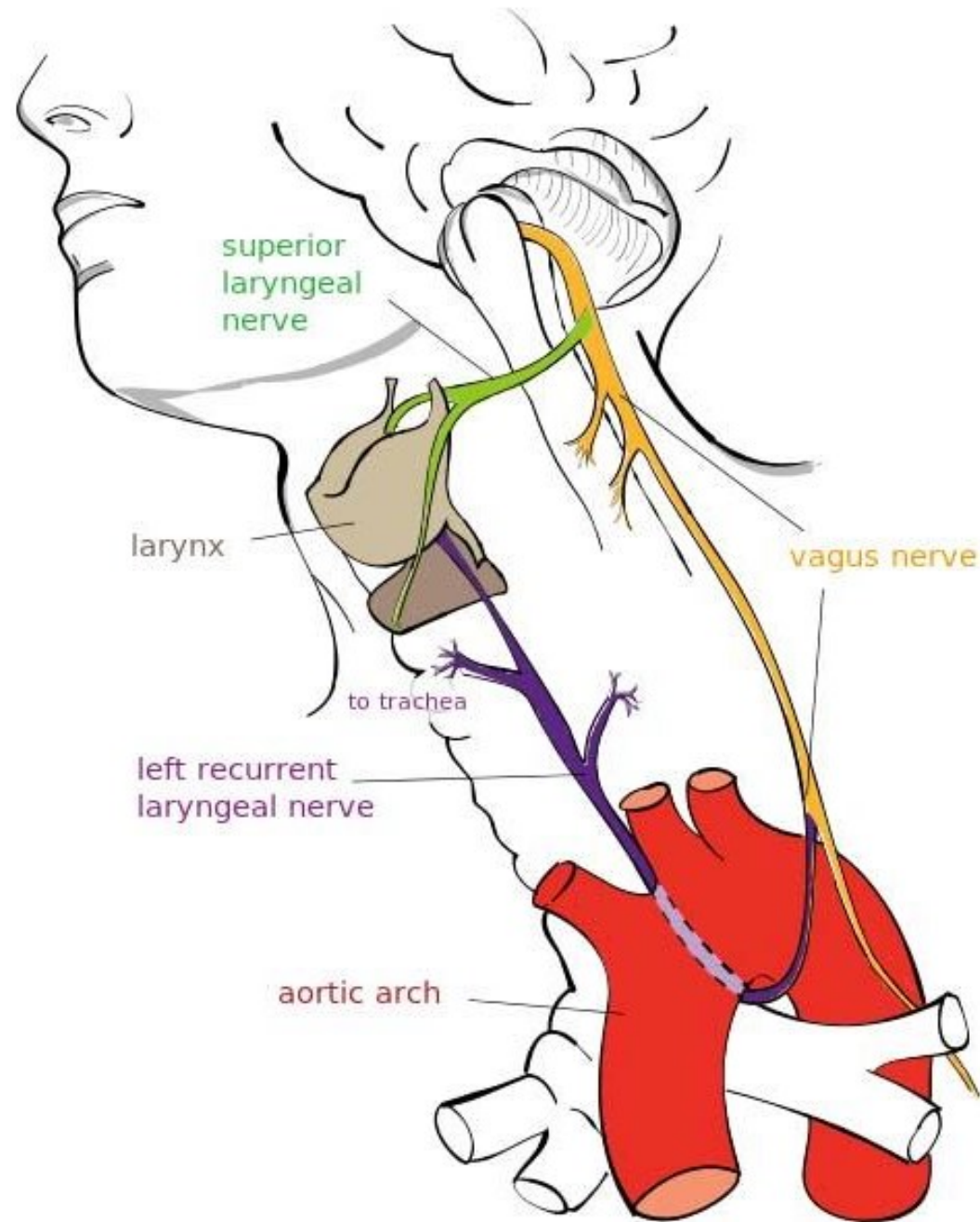


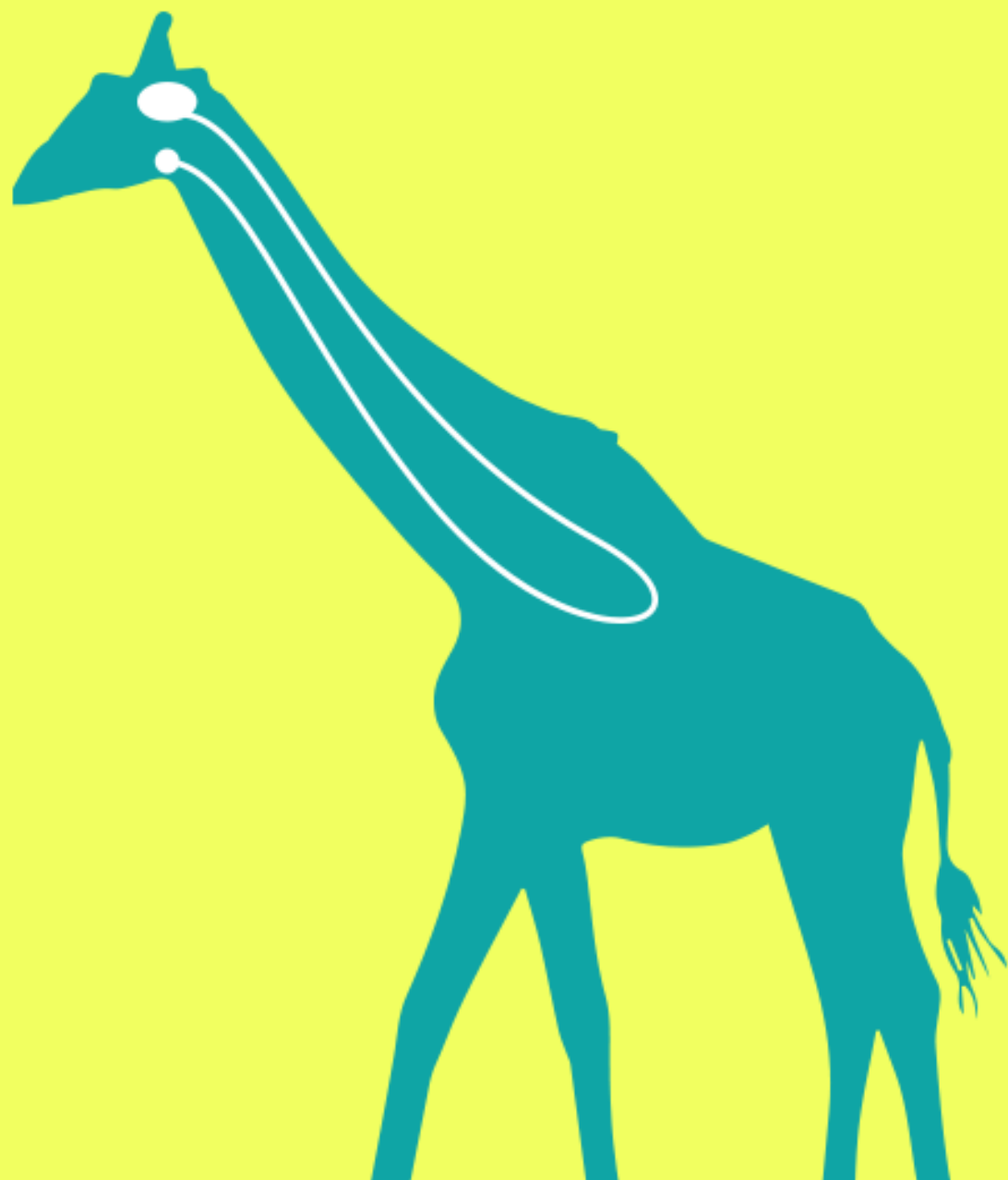


...from so simple a beginning endless forms most beautiful and most wonderful have been, and are being, evolved.— *Charles Darwin*



The right & left laryngeal nerves take wildly differing paths.






Progeria







An iceberg floating in a dark blue ocean under a clear blue sky. The tip of the iceberg is visible above the water, while the much larger, jagged base is submerged. The water is a deep, dark blue, and the sky is a lighter, clear blue. The iceberg's surface is textured with various ridges and grooves.

What you are  
allowed to see...

REALITY

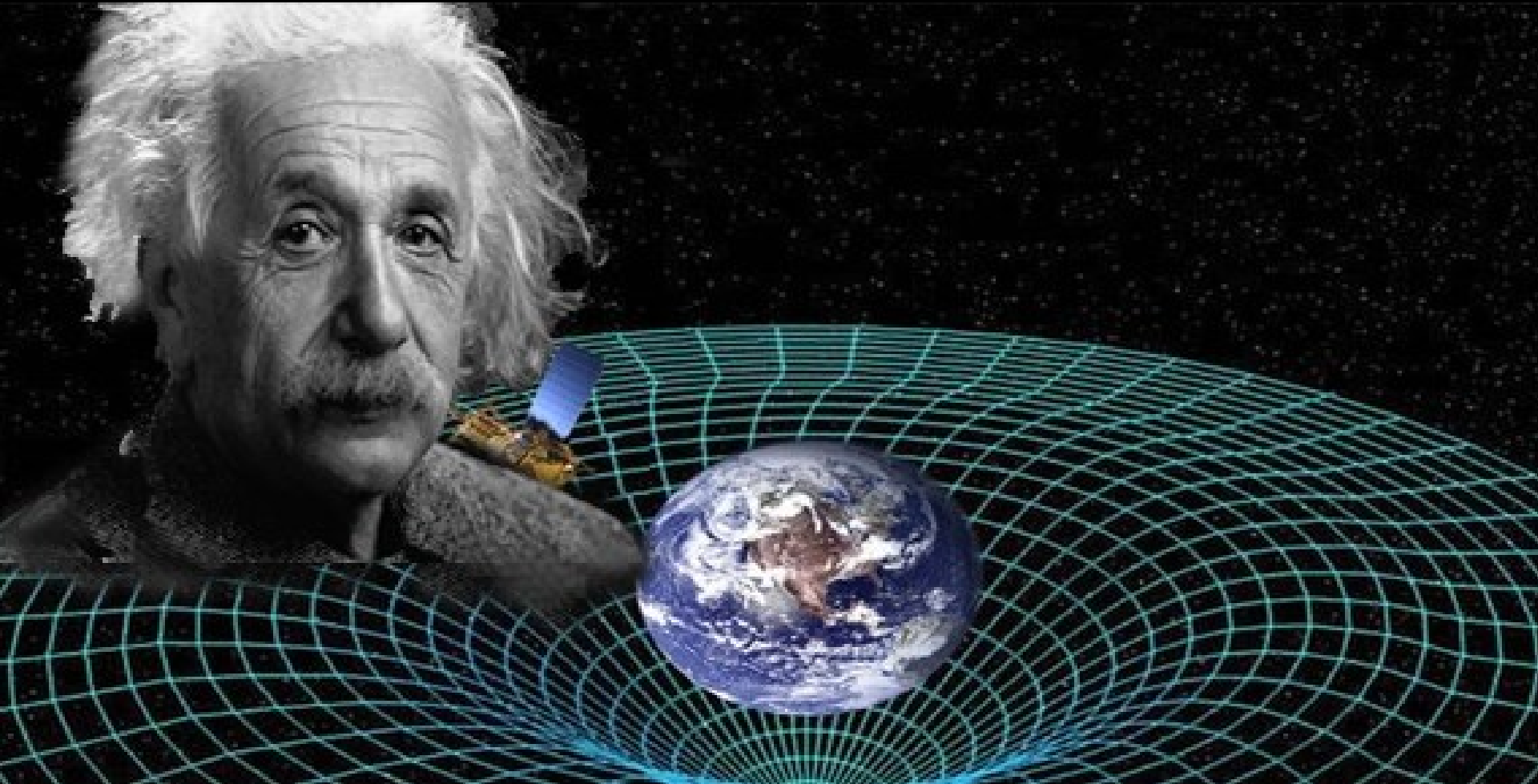
# ISAAC ASIMOV

## THE RELATIVITY OF WRONG

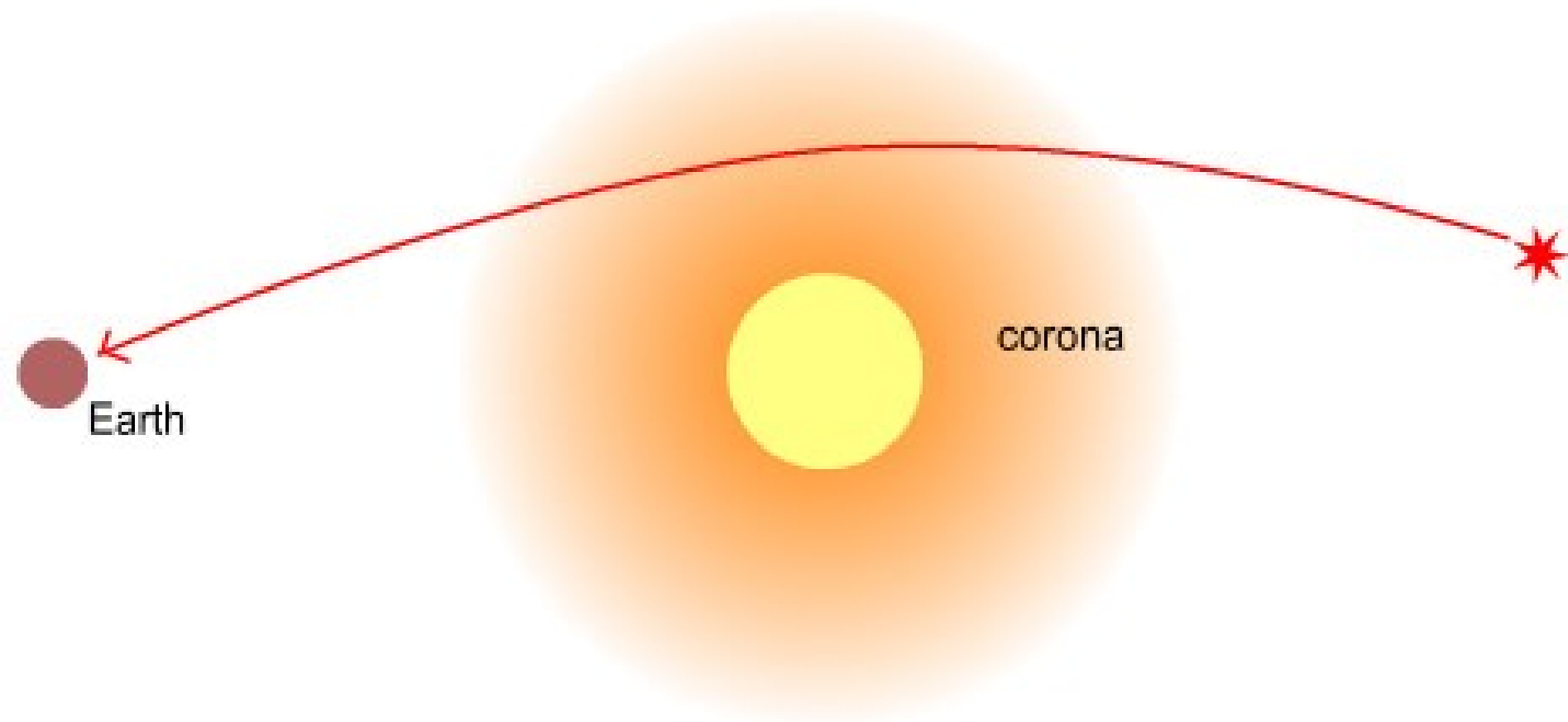
*Essays  
on Science*



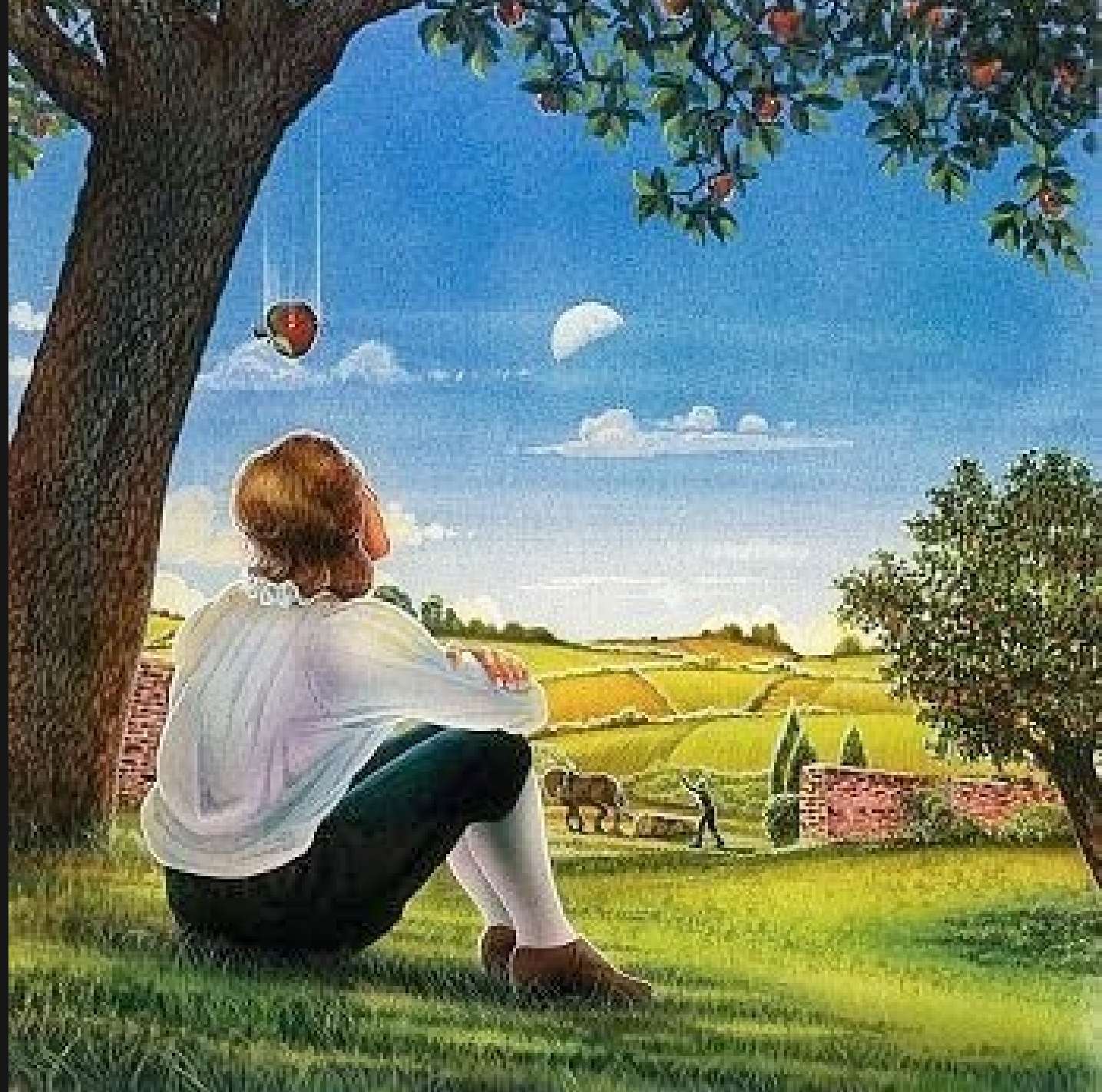
# General Theory of Relativity



# Sun's Gravity Bends Starlight







# GPS & Relativity

SPECIAL  
RELATIVITY  
+  
GENERAL  
RELATIVITY

Time  
Atomic Clock = 38 ns



Time  
Earth Clock = 0 ns





RELATIVITY



QUANTUM MECHANICS



# **SUGAR** VS **FAT**



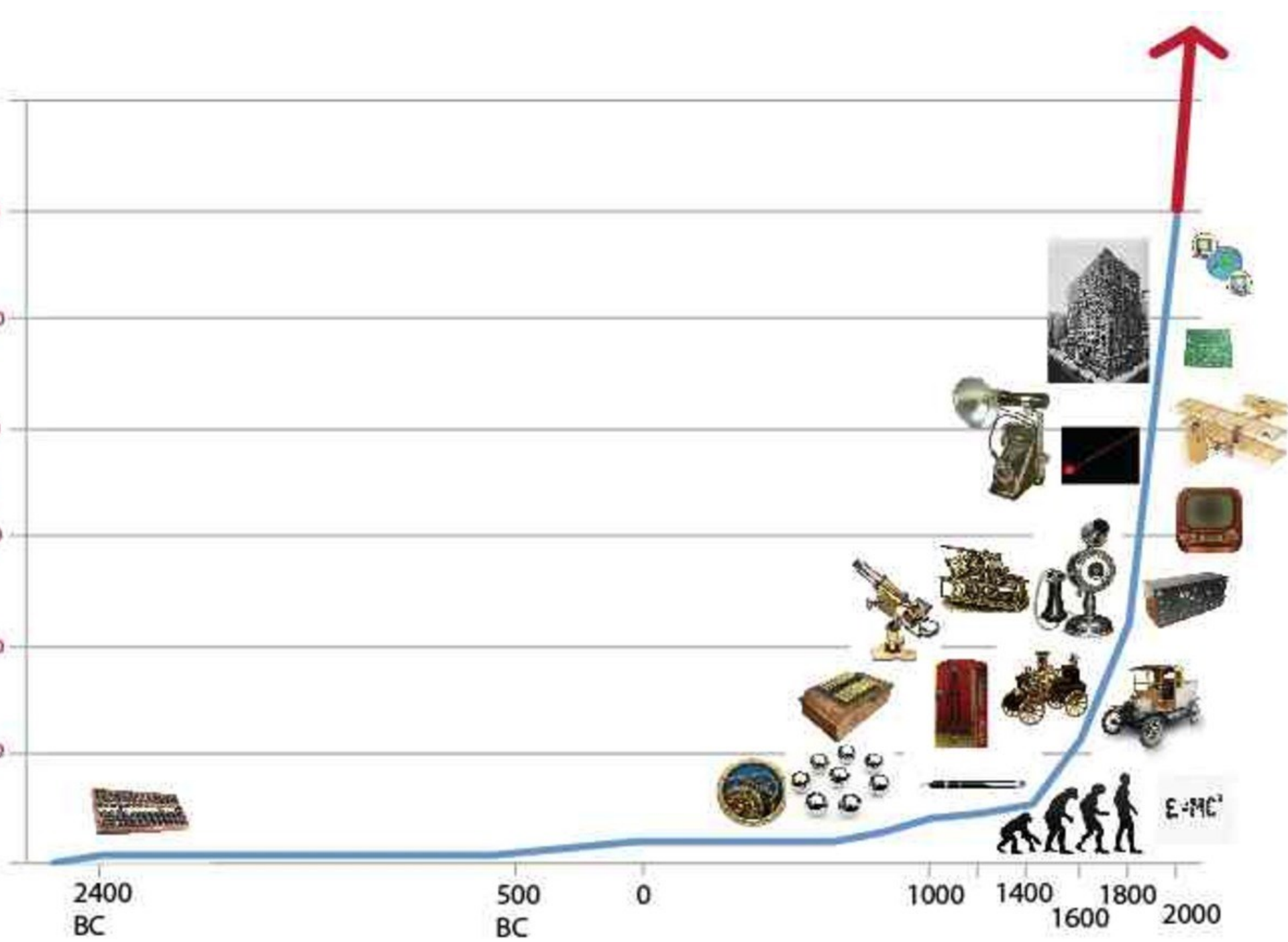
(How Fat has Taken the Rap)

Twelve Rivers Medicine

## UNITED STATES STOCK MARKET

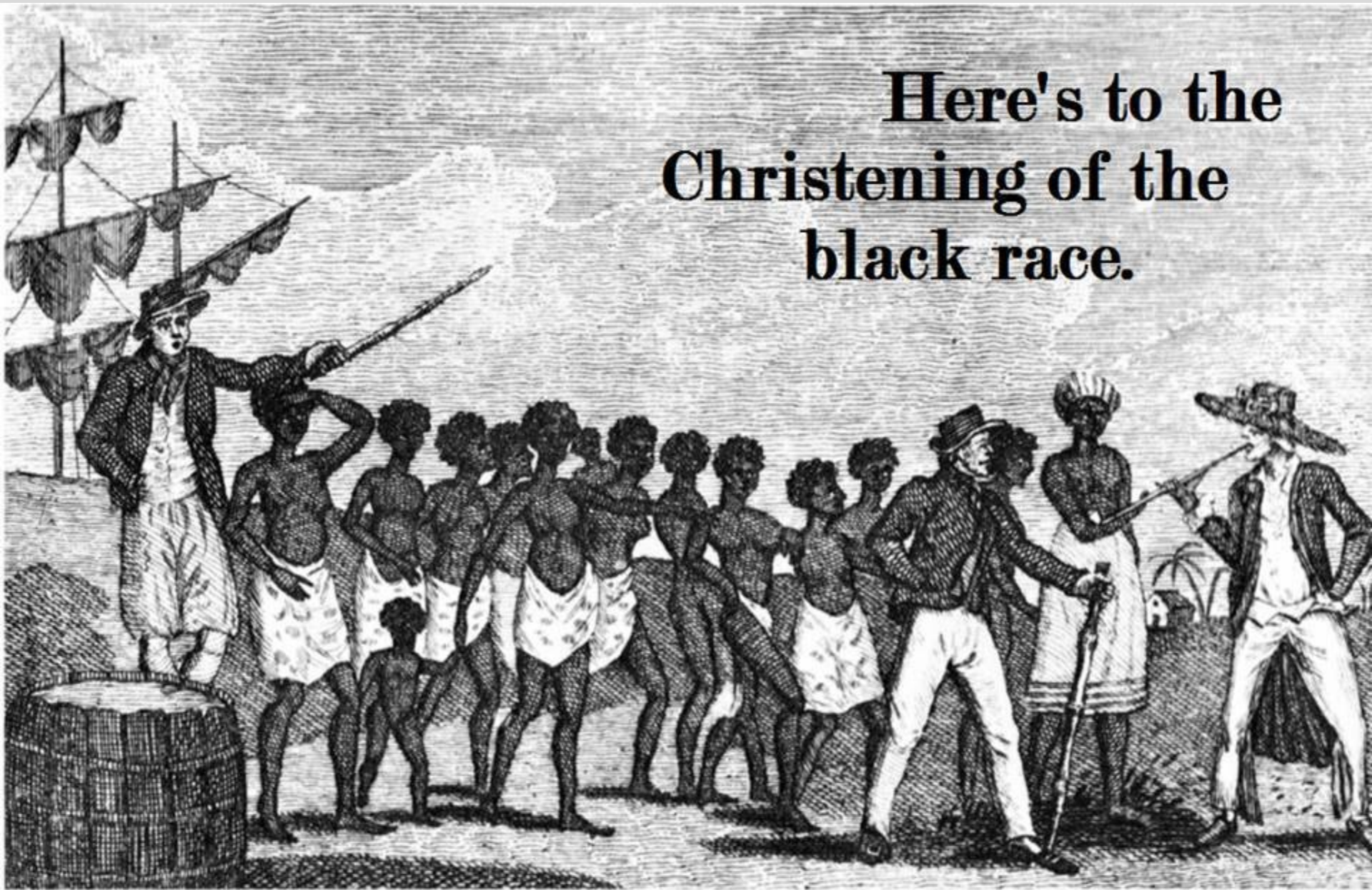


Source: [TradingEconomics.com](http://TradingEconomics.com)





**Here's to the  
Christening of the  
black race.**



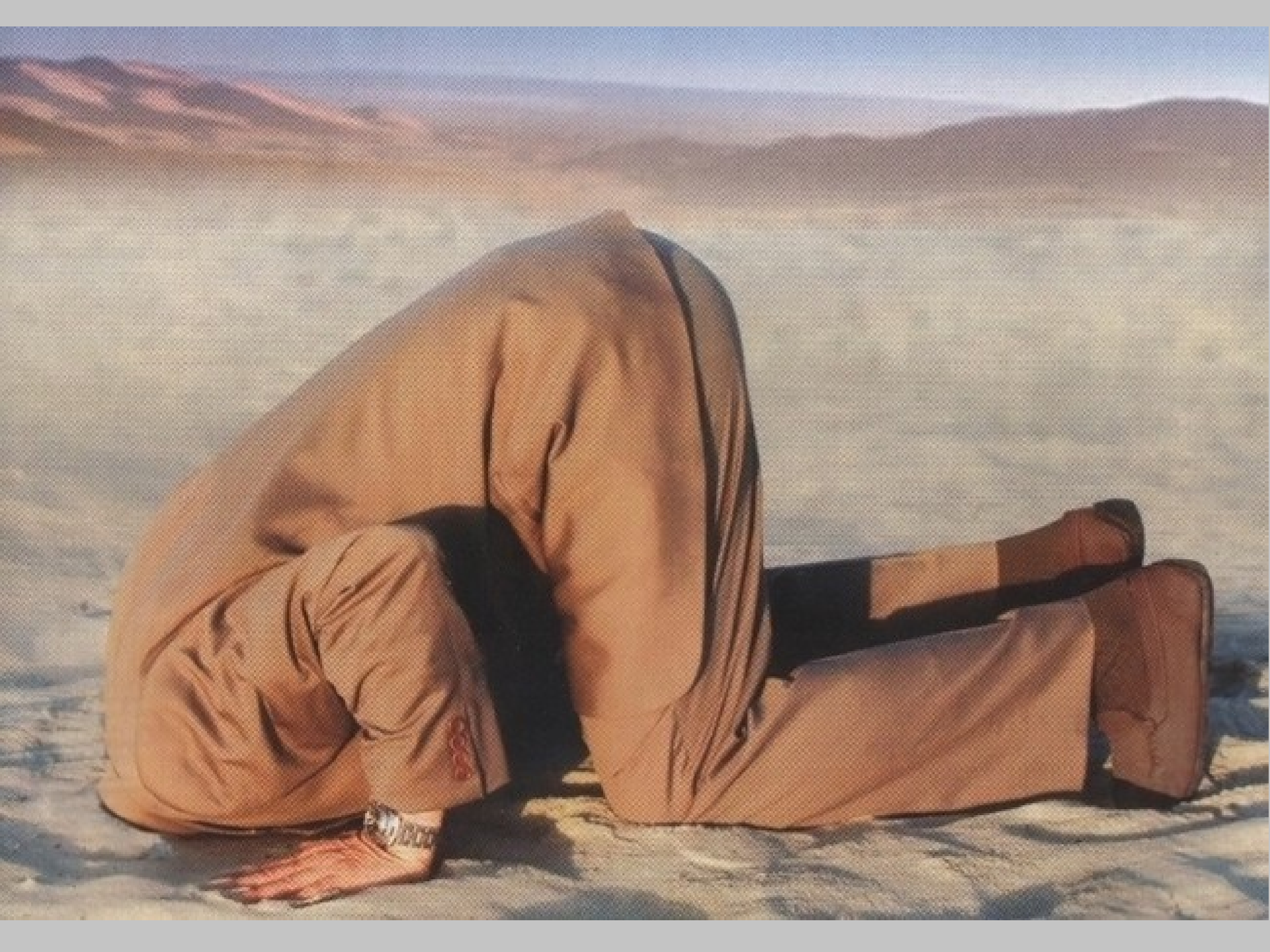


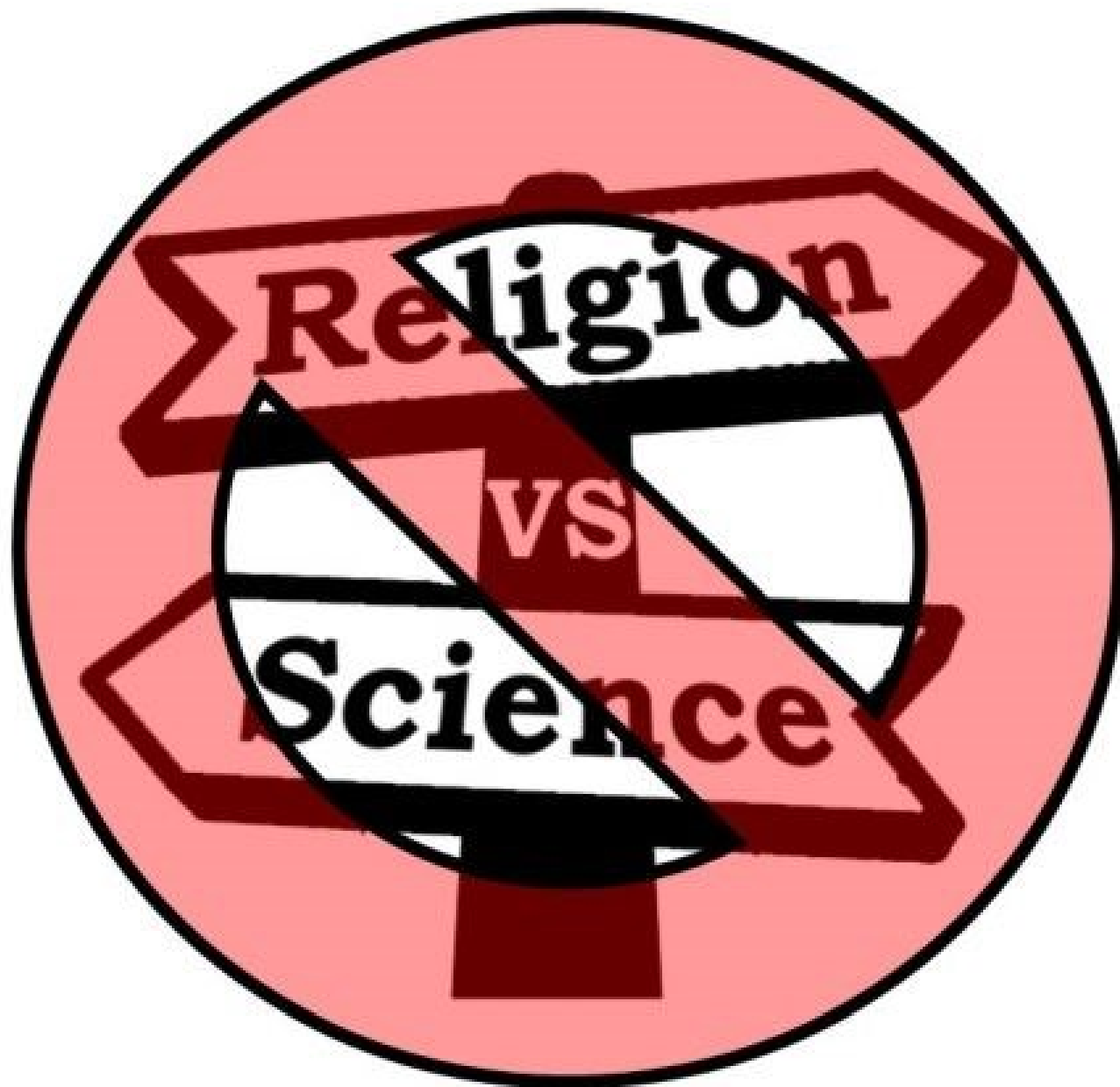
**EVIDENCE**



# Epiphany







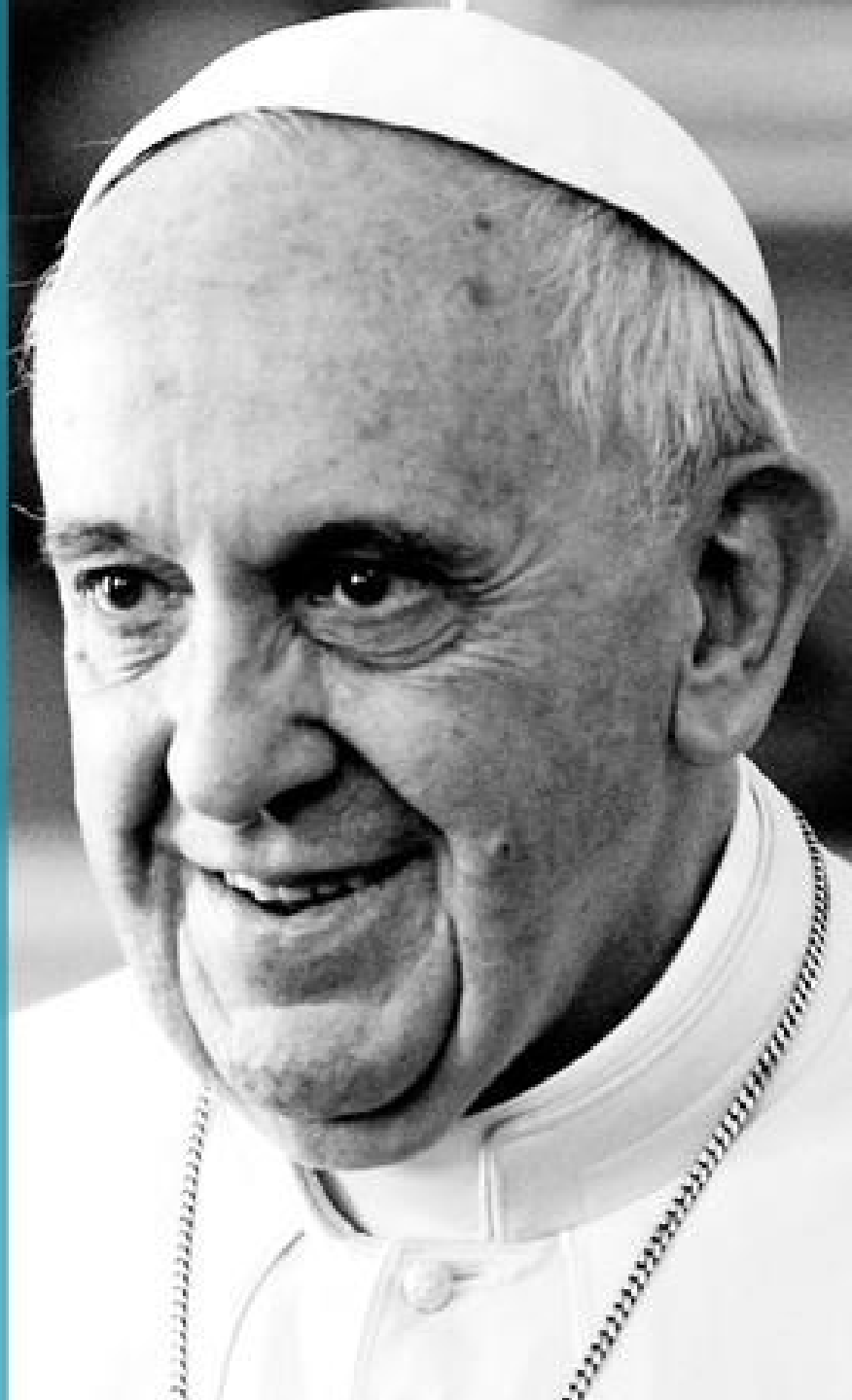
“

In the face of the emergencies of human-induced climate change, social exclusion, & extreme poverty, we join together to declare that:

Human-induced climate change is a **scientific reality**, and its decisive mitigation is a **moral and religious imperative** for humanity.

”

Pontifical Academies of Sciences and Social Sciences





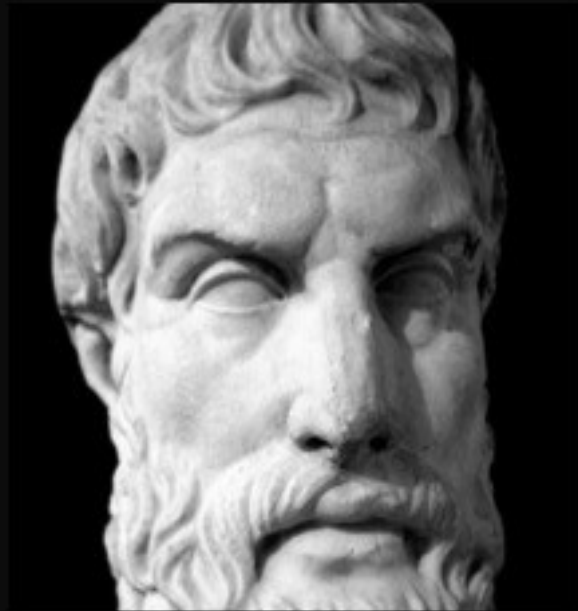
If science proves some belief of  
Buddhism wrong, then Buddhism  
will have to change.

— *Dalai Lama* —

---

Epicurus

---



Is God willing to prevent evil, but not able? Then he is not omnipotent. Is he able, but not willing? Then he is malevolent. Is he both able and willing? Then whence cometh evil? Is he neither able nor willing? Then why call him God?

---

AZ QUOTES

---



WHY DO BAD THINGS  
HAPPEN TO GOOD  
PEOPLE?

GOD WORKS IN  
MYSTERIOUS WAYS.



WHY DOES THIS  
SIMULATION WORK  
6% MORE  
EFFICIENTLY.?

WE LET BAD THINGS  
HAPPEN TO GOOD  
PEOPLE.







**THANK  
YOU!**

**Clay Farris Naff**

Science & Religion Corr.,

Columnist,

Member,

Vice President,

The Humanist

The Huffington Post

Nat'l Assoc. of Science Writers

Neb. Citizens for Science

Follow me on Twitter:

@claynaff