

11-2015

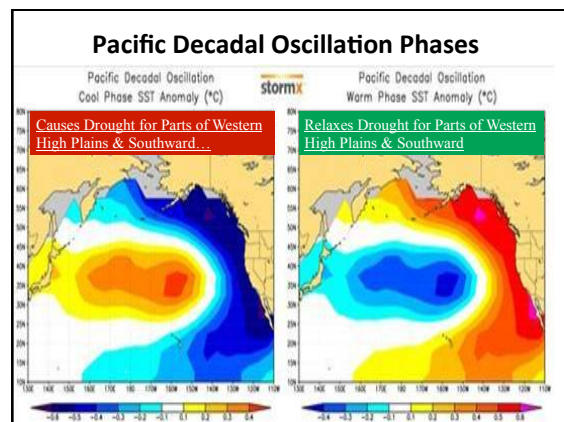
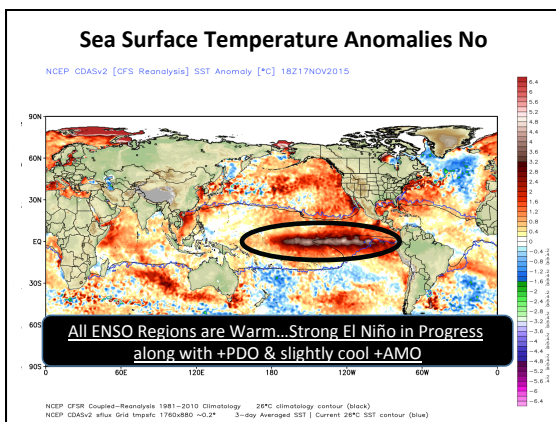
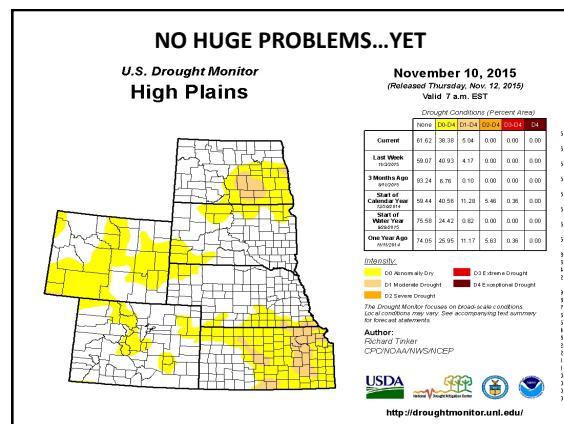
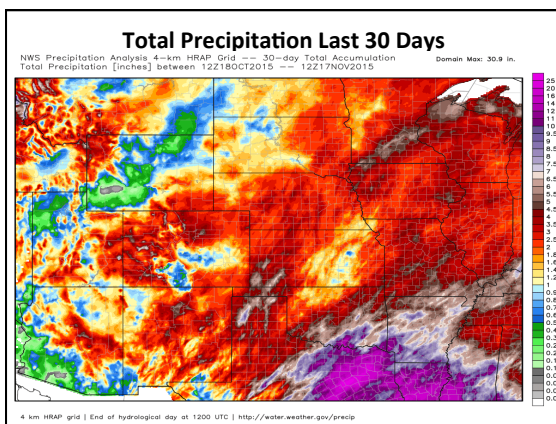
Long Range Forecast 2016

Brian Bledsoe

Follow this and additional works at: <http://digitalcommons.unl.edu/rangebeefcowsymp>

Bledsoe, Brian, "Long Range Forecast 2016" (2015). *Range Beef Cow Symposium*. 375.
<http://digitalcommons.unl.edu/rangebeefcowsymp/375>

This Article is brought to you for free and open access by the Animal Science Department at DigitalCommons@University of Nebraska - Lincoln. It has been accepted for inclusion in Range Beef Cow Symposium by an authorized administrator of DigitalCommons@University of Nebraska - Lincoln.



Pacific Decadal Oscillation Negative = Cold Positive = Warm

	JAN	FEB	MAR	APR	MAY	JUN	JULY	AUG	SEP	OCT	NOV	DEC
2005	0.44	0.81	1.36	1.03	1.86	1.17	0.66	0.25	-0.46	-1.32	-1.50	0.20
2006	1.03	0.66	0.05	0.40	0.48	1.04	0.35	-0.65	-0.94	-0.05	-0.22	0.14
2007	0.01	0.04	-0.36	0.16	-0.10	0.09	0.78	0.50	-0.36	-1.45	-1.08	-0.58
2008	-1.00	-0.77	-0.71	-1.52	-1.37	-1.34	-1.67	-1.70	-1.55	-1.76	-1.25	-0.87
2009	-1.40	-1.55	-1.59	-1.65	-0.88	-0.31	-0.53	0.09	0.52	0.27	-0.40	0.08
2010	0.83	0.82	0.44	0.78	0.62	-0.22	-1.05	-1.27	-1.61	-1.06	-0.82	-1.21
2011	-0.92	-0.83	-0.69	-0.42	-0.37	-0.69	-1.86	-1.74	-1.79	-1.34	-2.33	-1.79
2012	-1.38	-0.85	-1.05	-0.27	-1.26	-0.87	-1.52	-1.93	-2.21	-0.79	-0.59	-0.48
2013	-0.13	-0.43	-0.63	-0.16	0.08	-0.78	-1.25	-1.04	-0.48	-0.87	-0.11	-0.41
2014	0.30	0.33	0.97	1.13	1.81	0.82	0.70	0.67	1.08	1.49	1.72	2.51
2015	2.45	2.35	2.00	1.44	1.22	1.54	1.84	1.56	1.94	1.47		

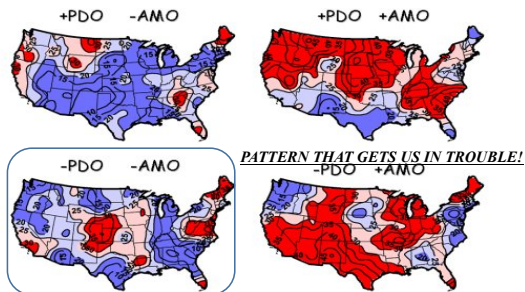
1. Shifted from warm to cold around 2005, since, drought has been a problem
2. The more negative the number, the stronger the drought signal for the Southwest and Western High Plains...More frequent La Nina episodes.
3. The less negative or more positive the number, the drought situation improves.

Atlantic Multi-decadal Oscillation Negative = Cold Positive = Warm

	JAN	FEB	MAR	APR	MAY	JUN	JULY	AUG	SEP	OCT	NOV	DEC
2005	.132	.146	.305	.313	.314	.348	.468	.461	.440	.259	.161	.237
2006	.145	.096	.081	.219	.330	.354	.396	.422	.385	.356	.310	.193
2007	.193	.239	.149	.180	.133	.110	.150	.076	.120	.179	.198	.133
2008	.052	.150	.180	.065	.194	.278	.228	.197	.220	.124	.023	.041
2009	-.037	-.142	-.138	-.109	-.039	.143	.250	.175	.079	.187	.092	.105
2010	.062	.199	.310	.448	.482	.470	.472	.548	.472	.346	.258	.230
2011	.166	.130	.078	.114	.174	.201	.114	.169	.167	.085	-.048	-.022
2012	-.042	.027	.048	.103	.187	.323	.398	.454	.471	.352	.188	.164
2013	.151	.138	.181	.159	.124	.069	.213	.217	.278	.370	.151	.059
2014	-.039	-.020	-0.058	-0.071	.021	.085	.244	.356	.331	.312	.085	.078
2015	.012	.016	-.109	-.051	.065	.049	.151	.197	.318	.342		

1. AMO has been positive since 1995
2. Went briefly negative last winter/spring
3. Warmed A LOT since spring...
4. Some believed that was the AMO changing phase...clearly it was not.

Pertaining to Drought Frequency (McCabe 2004) Blue = Lower Frequency Red = Higher Frequency



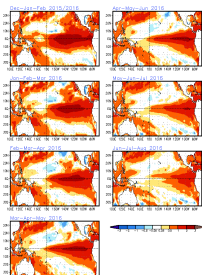
Next Phase Long Term Phase

ENSO Forecast Update!

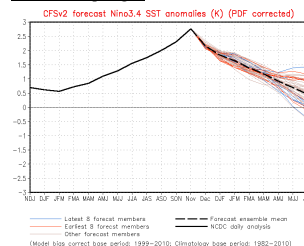


BrianBledsoe
WX.com

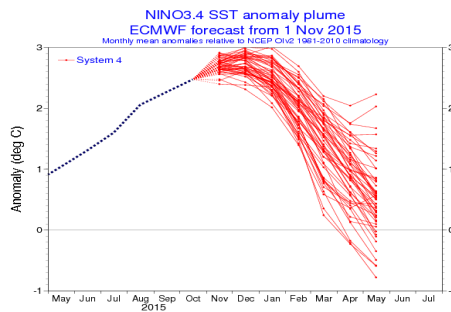
SST Outlook: NCEP CFS.v2 Forecast Issued November 16th, 2015

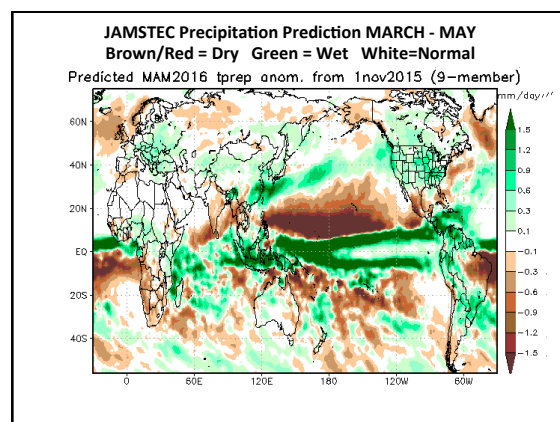
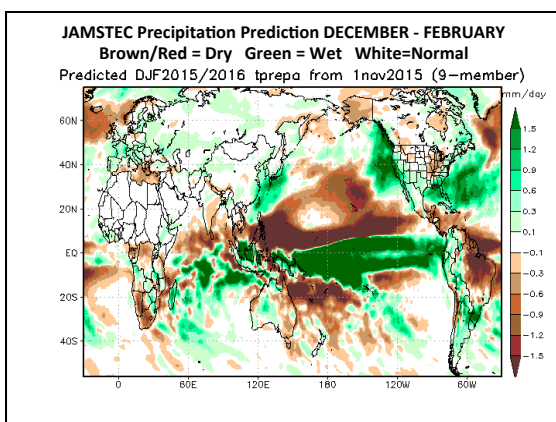
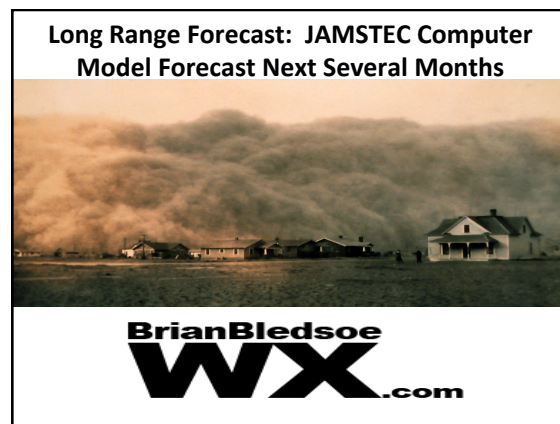
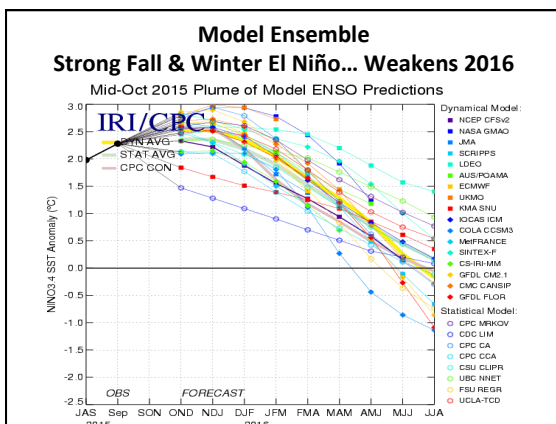
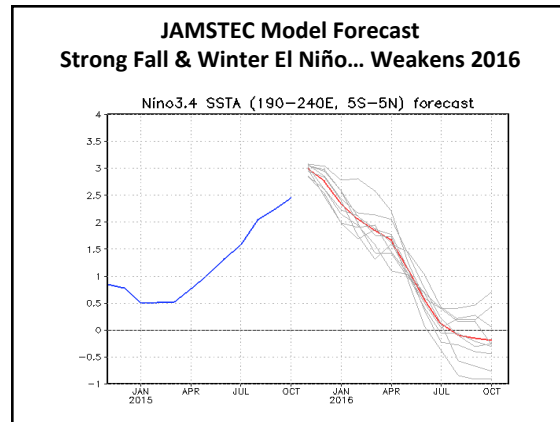
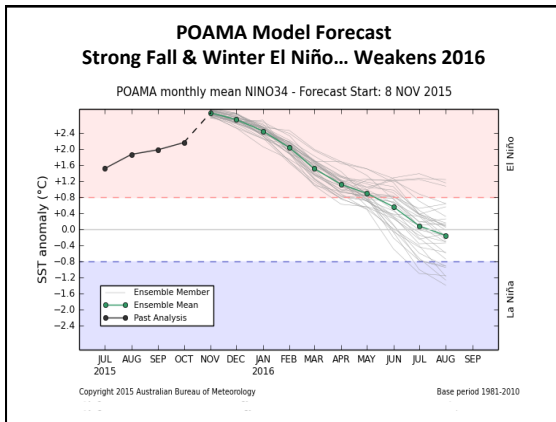


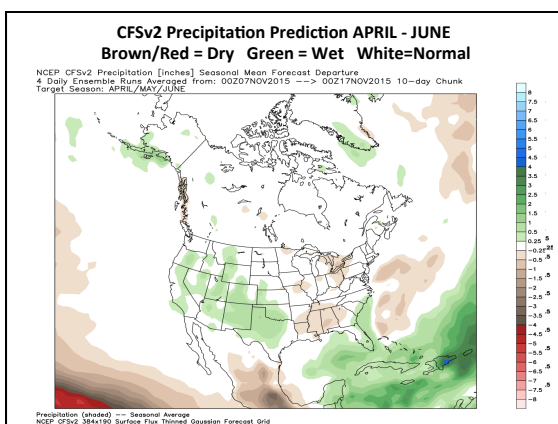
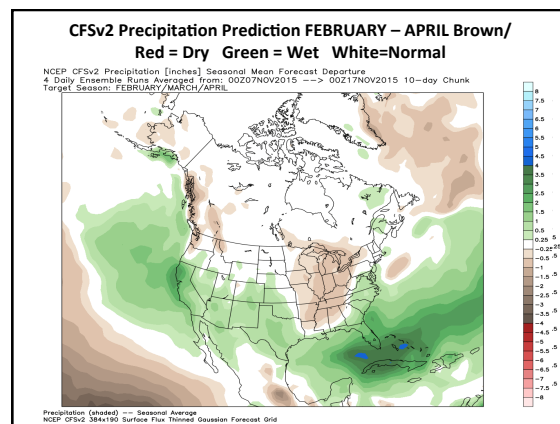
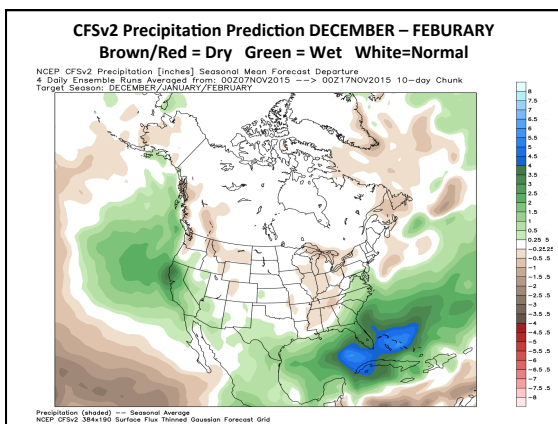
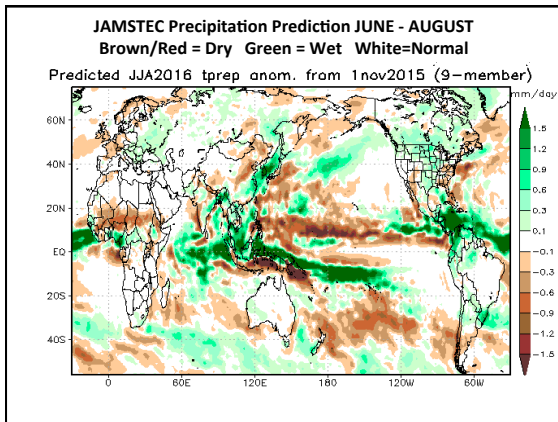
The CFS.v2 predicts strong El Niño conditions through end of 2015 and early 2016. El Niño weakens noticeably by late winter and spring...

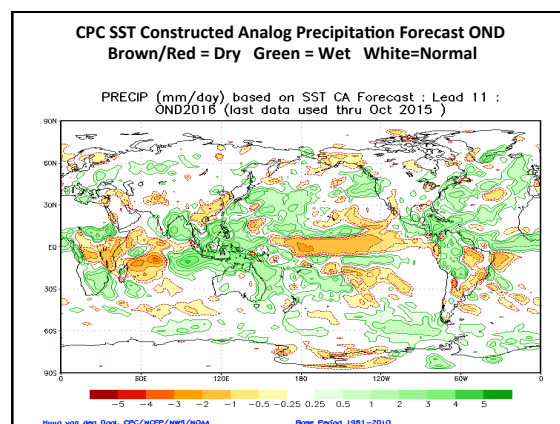
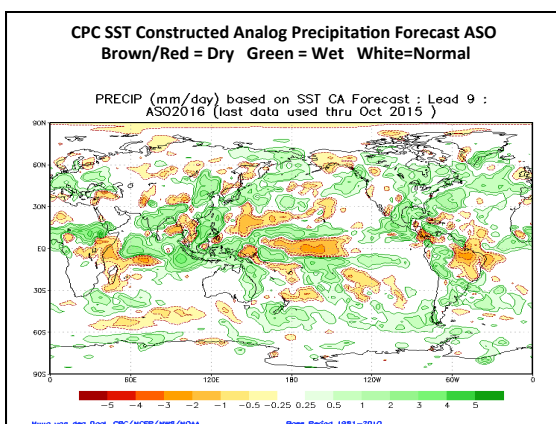
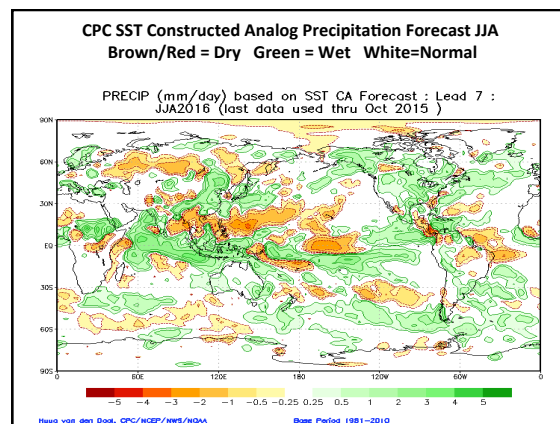
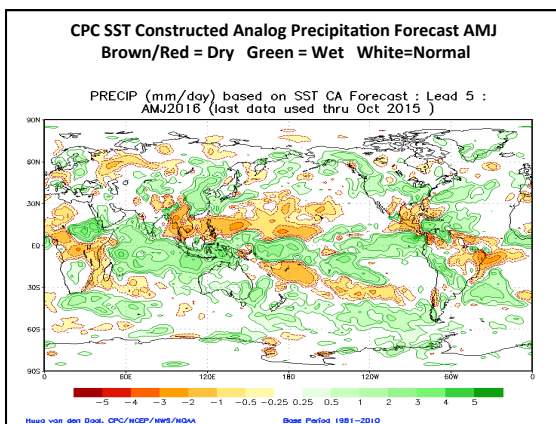
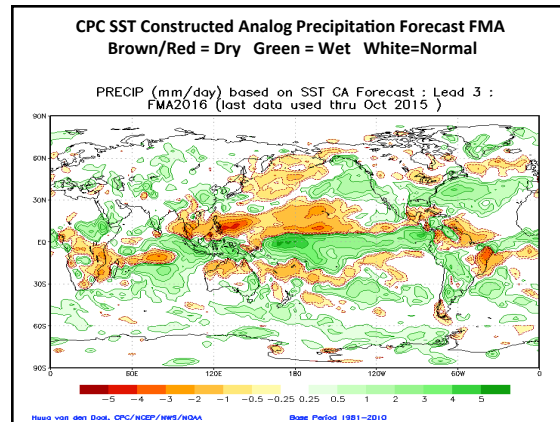
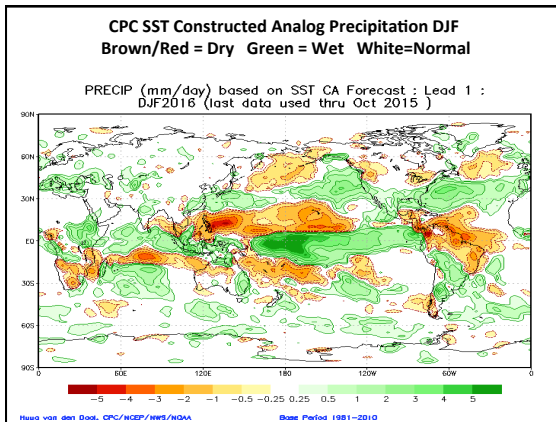


ECMWF Forecasting Strong El Niño Rapid Weakening After January...











- El Niño favors southern areas with best moisture...winter & early spring.
- When El Niño relaxes, storm track moves farther north. Starts in spring may continue into summer...
- No apparent drought areas of concern in Western High Plains...FOR NOW!
- La Niña likely returns late 2016...late summer & fall? May spur dryness & allow drought to start. Especially south of I-80...



- brianbledsoewx@gmail.com
- E-Mail Anytime
- Twitter @BrianBledsoe or @BrianBledsoeWx
- Facebook BrianBledsoeWx, LLC