

Spring 4-19-2016

Study of Northern Renaissance artist Sebald Beham through his printed works

Anika Zempleni

University of Nebraska-Lincoln, anika@huskers.unl.edu

Follow this and additional works at: <http://digitalcommons.unl.edu/ucareresearch>



Part of the [Ancient, Medieval, Renaissance and Baroque Art and Architecture Commons](#)

Zempleni, Anika, "Study of Northern Renaissance artist Sebald Beham through his printed works" (2016). *UCARE Research Products*. 63.

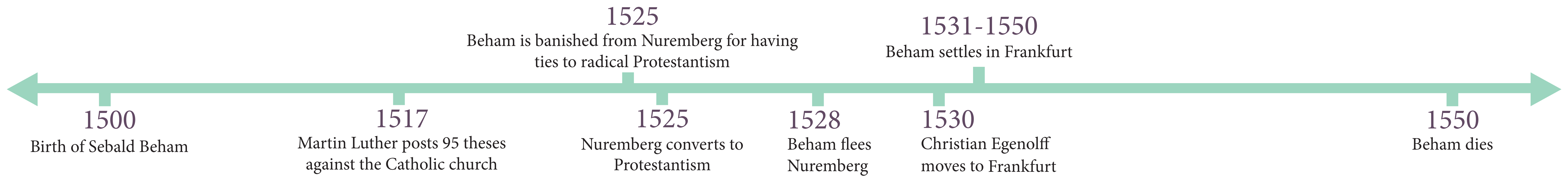
<http://digitalcommons.unl.edu/ucareresearch/63>

This Poster is brought to you for free and open access by the UCARE: Undergraduate Creative Activities & Research Experiences at DigitalCommons@University of Nebraska - Lincoln. It has been accepted for inclusion in UCARE Research Products by an authorized administrator of DigitalCommons@University of Nebraska - Lincoln.

Study of Northern Renaissance artist Sebald Beham through his printed works

Anika Zempleni, University of Nebraska-Lincoln

For Alison G. Stewart, Hixson-Lied Professor of Art History, Department of Art and Art History



Introduction

Sebald Beham(1500-1550) was a Northern Renaissance artist born in Nuremberg, Germany. Over the years, he has been classified as a “Godless artist” and “Little Master,” because of his association with radical Protestantism during the Protestant and Lutheran Reformation and for his miniscule engravings.

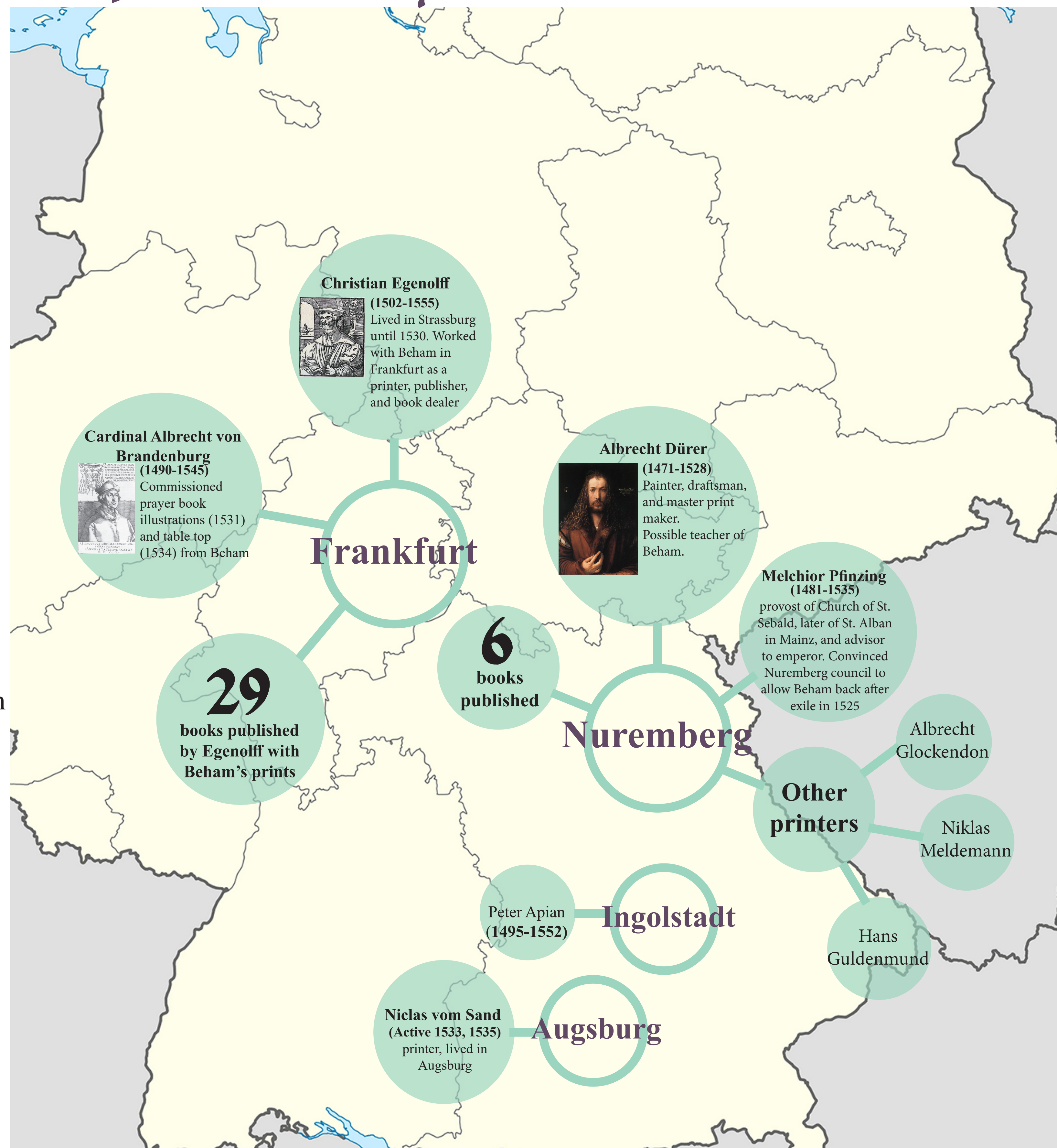
His works include woodcuts, engravings, paintings, and designs for stained glass. Most of his works are prints, however. This project focuses on gaining a better understanding of the interests, associates, and living locations of Beham.

Approach

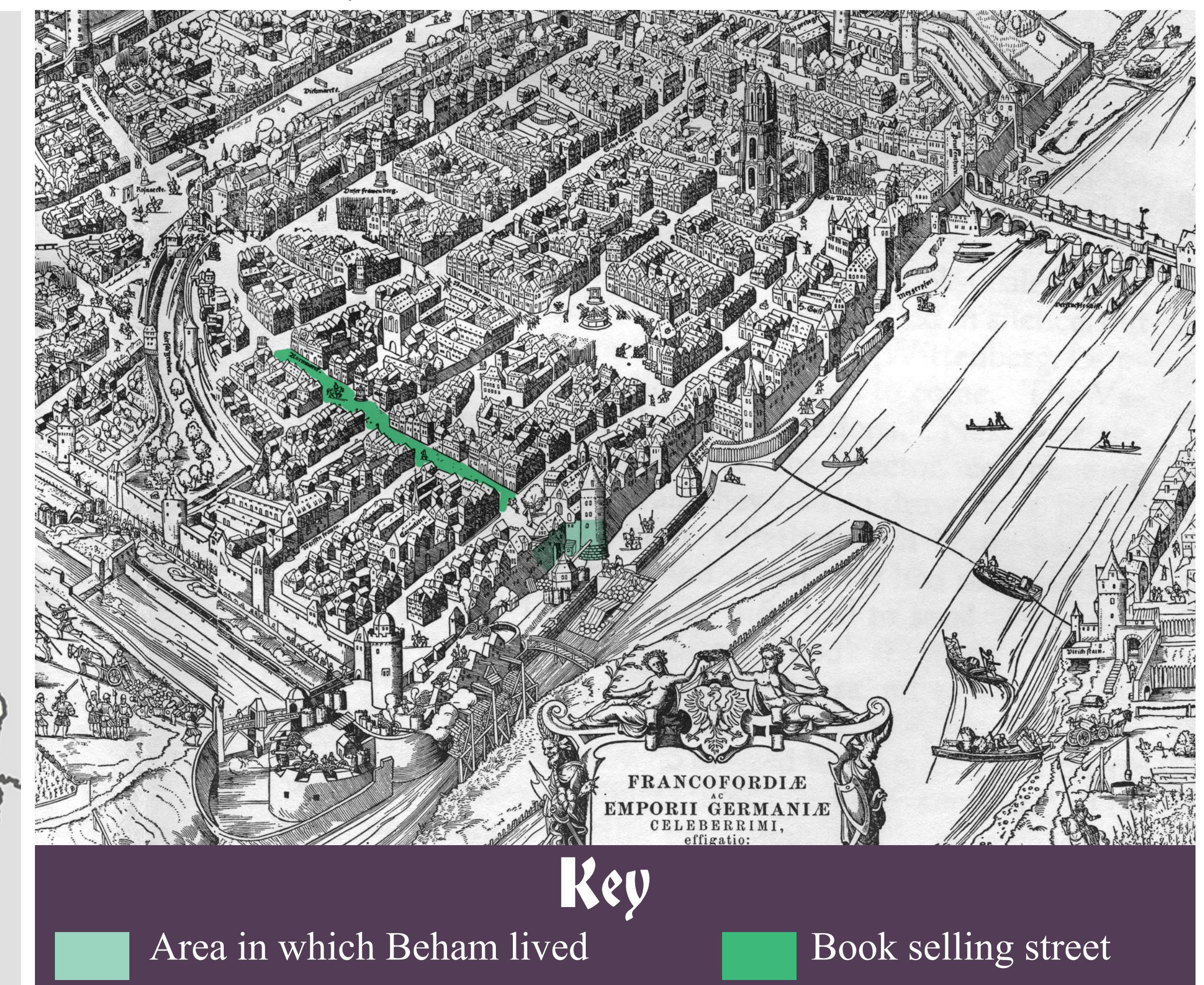
The methods used to gather and understand information on Sebald Beham follow:

- Researching the Northern Renaissance as a whole
- Developing German language abilities (including how to read old German print script)
- Reading existing research on Beham
- Using Gustav Pauli’s catalog of known Beham works and compiling the data there in a spreadsheet
- Finding images and online books of Beham’s prints

Map of Germany with Beham's Associates



Map of Old Frankfurt



References

Texts

Pauli, Gustav. *Hans Sebald Beham: Ein Kritisches Verzeichniss seiner Kupferstiche, Radirungen und Holzschnitte*. Strassburg, 1901.

Stewart, Alison. “Sebald Beham: Entrepreneur, Printmaker, Painter.” *Journal of Historians of Netherlandish Art* 4.2 (2012). Web. <http://www.jhna.org/index.php/past-issues/volume-4-issue-2/159-sebald-beham-entrepreneur-printmaker-painter->

Stewart, Alison. “The Artist’s Lament in 1528. Exile, Printing, and the Reformation.” *Die Klage des Künstlers: Krise und Umbruch von der Reformation bis um 1800*, ed. Birgit Ulrike Münch, Andreas Tacke, Markwart Herzog, Sylvia Heudecker (Petersburg: Michael Imhof Verlag GmbH & Co. KG, 2015), pp. 70-81. (2015). Web. <http://digitalcommons.unl.edu/artfacpub/24/>

Illustrations

Albrecht Dürer, *Self-Portrait in a Fur-Collared Robe*, oil on limewood, 1500, Alte Pinakothek, Munich. [https://en.wikipedia.org/wiki/Self-Portrait_\(D%C3%BCrer,_Munich\)#/media/File:Durer_selfportrait.jpg](https://en.wikipedia.org/wiki/Self-Portrait_(D%C3%BCrer,_Munich)#/media/File:Durer_selfportrait.jpg)

Albrecht Dürer, *Cardinal Albrecht of Brandenburg*, engraving, 1519, Staatliche Kunsthalle, Karlsruhe. http://www.wga.hu/html_m/d/durer/2/13/4/088.html

Conrad Faber von Kreuznach, *Frankfurt am Main*, woodcut, 1552. https://commons.wikimedia.org/wiki/File:Frankfurt_Am_Main-Faber1552-Komplett.jpg

Artist unknown, *Portrait of Christian Egenolff*, woodcut, after 1555. https://en.wikipedia.org/wiki/Christian_Egenolff#/media/File:Christian_Egenolff00.jpg