

5-15-2007

# TRUMPETER SWAN SURVEY of the ROCKY MOUNTAIN POPULATION WINTER 2007

James A. Dubovsky  
*Migratory Birds and State Programs*

Follow this and additional works at: <http://digitalcommons.unl.edu/usfwspubs>

---

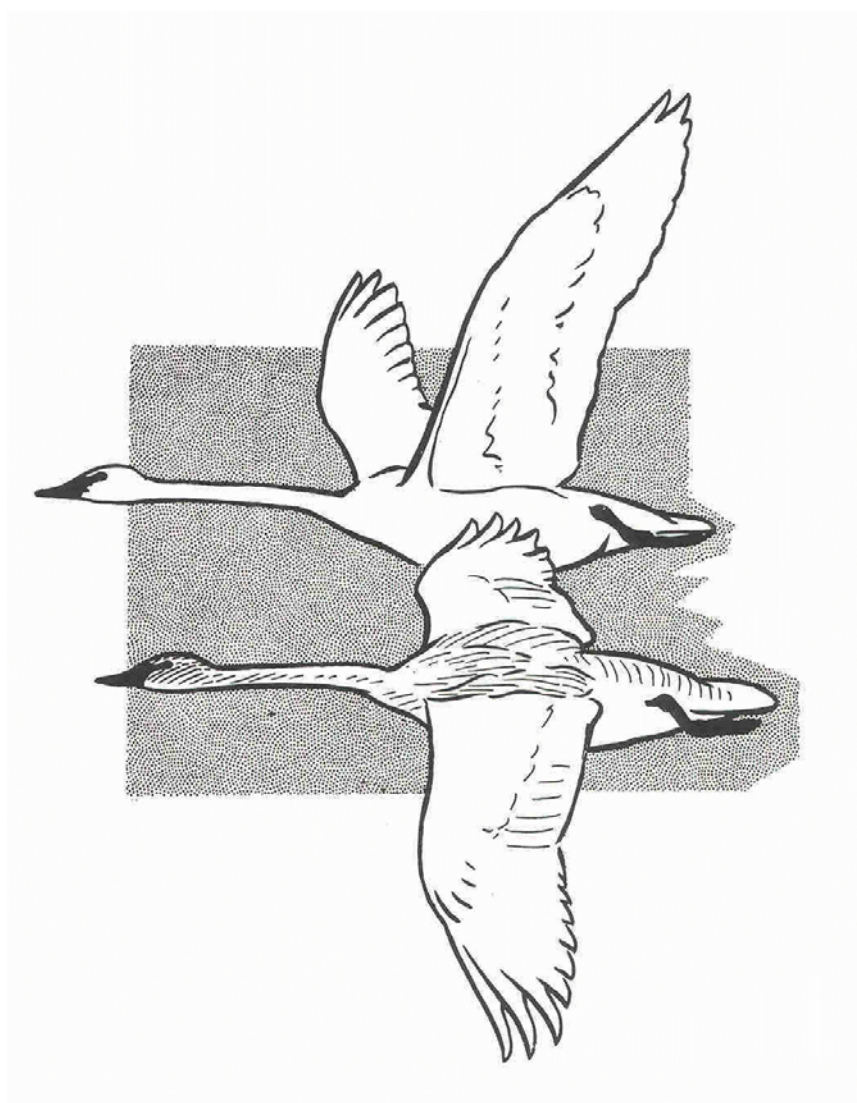
Dubovsky, James A., "TRUMPETER SWAN SURVEY of the ROCKY MOUNTAIN POPULATION WINTER 2007" (2007). *US Fish & Wildlife Publications*. 496.  
<http://digitalcommons.unl.edu/usfwspubs/496>

This Article is brought to you for free and open access by the US Fish & Wildlife Service at DigitalCommons@University of Nebraska - Lincoln. It has been accepted for inclusion in US Fish & Wildlife Publications by an authorized administrator of DigitalCommons@University of Nebraska - Lincoln.



**TRUMPETER SWAN SURVEY  
of the  
ROCKY MOUNTAIN POPULATION**

**WINTER 2007**





**TRUMPETER SWAN SURVEY  
of the  
ROCKY MOUNTAIN POPULATION  
WINTER 2007**

U.S. Fish and Wildlife Service  
Migratory Birds and State Programs  
Mountain-Prairie Region  
Lakewood, Colorado

May 15, 2007

Prepared by: James A. Dubovsky  
James A. Dubovsky, Acting Chief  
Migratory Bird Program

Approved: Emily Jo Williams  
Emily Jo Williams, Assistant Regional Director  
Migratory Birds and State Programs

Richard A. Coleman  
Richard A. Coleman, Regional Chief  
National Wildlife Refuge System



*Abstract.*— Observers counted 4,701 swans (white birds and cygnets) in the Rocky Mountain Population of trumpeter swans during January and February 2007, a decrease of 14% from the 5,484 counted during winter 2006. However, in Montana, aerial surveys were conducted only in a portion of the survey area; ground counts were conducted on remaining areas. The numbers of white birds (3,660) and cygnets (919) decreased 14% and 25%, respectively, from counts last year, although these declines are biased high due to a number of birds in Idaho not being classified as either white birds or cygnets. In the tri-state area, decreases in total swans occurred in Montana (-44%) and Idaho (-14%), but increased (+14%) to a record-high count for the third consecutive year in Wyoming. The number of birds wintering in areas near restoration flocks was the highest since 2001, due largely to a 67% increase in the number of swans counted at the Summer Lake Wildlife Management Area. A record low number of swans was counted at Malheur National Wildlife Refuge, while the number of birds at Ruby Lake NWR increased slightly. Reservoir levels in early February increased 11% from levels during 2006, and were 8% above the long-term average. Generally, temperatures in the tri-state area during winter 2006-07 were average or slightly warmer than average, and precipitation was below average.

---

The Rocky Mountain Population (RMP) of trumpeter swans (*Cygnus buccinator*) consists of birds that nest primarily from western Canada southward to Nevada and Wyoming (Fig. 1). The population is comprised of several flocks that nest in different portions of the overall range. The RMP/Canadian Flocks consist of birds that summer primarily in southeastern Yukon Territory, southwestern Northwest Territories, northeastern British Columbia, Alberta, and western Saskatchewan. The RMP/Tri-state Area Flocks summer in areas at the juncture of the boundaries of Montana, Wyoming, and Idaho (hereafter termed the tri-state area) and nearby areas (Fig. 2). The Canadian and Tri-state Area flocks winter sympatrically primarily in the tri-state area. In addition, efforts have been made to establish several RMP restoration flocks, such as those at Ruby Lake National Wildlife Refuge (NWR) in Nevada (i.e., Nevada flock) and those at Malheur NWR and Summer Lake Wildlife Management Area (WMA) and vicinity (i.e., Oregon flock), by translocating adult swans and cygnets from other portions of the RMP. These birds tend to winter in areas near those where they nest. These terms for the various groups of swans are consistent with the RMP Trumpeter Swan Implementation Plan (Pacific Flyway Study Committee 2002).

Although counts of swans wintering in the tri-state area have been conducted since at least the 1950s (Banko 1960), many early efforts were not well-coordinated and were variable. In an attempt to better coordinate the survey, in 1972 the U.S. Fish and Wildlife Service (Service) began the annual Mid-winter Trumpeter Swan Survey in the tri-state region. During the next decade, the area surveyed increased substantially, and by 1981 it was believed all known occupied wintering sites were included (Gale et al. 1988). Recent attempts to expand the wintering range of RMP trumpeter swans has resulted in the inclusion of yet more areas to the survey. Also, some areas may not be surveyed in a particular year due to weather or resource limitations (e.g., staff, money). Such survey modifications make individual counts from year-to-year less comparable, but the data are sufficient to reasonably depict trends in abundance.



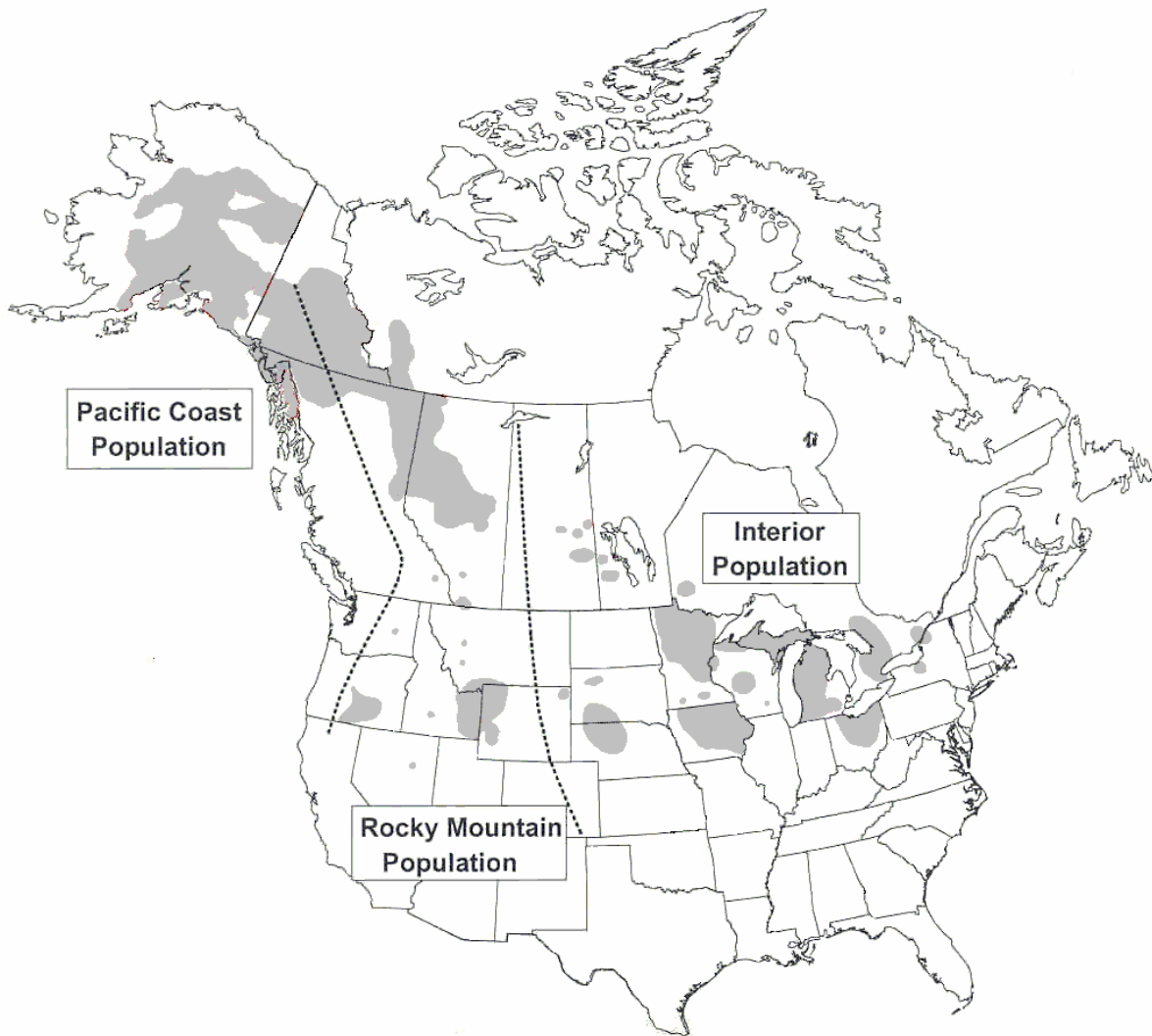


Fig. 1. Approximate ranges of trumpeter swans during summer (from Moser 2006).



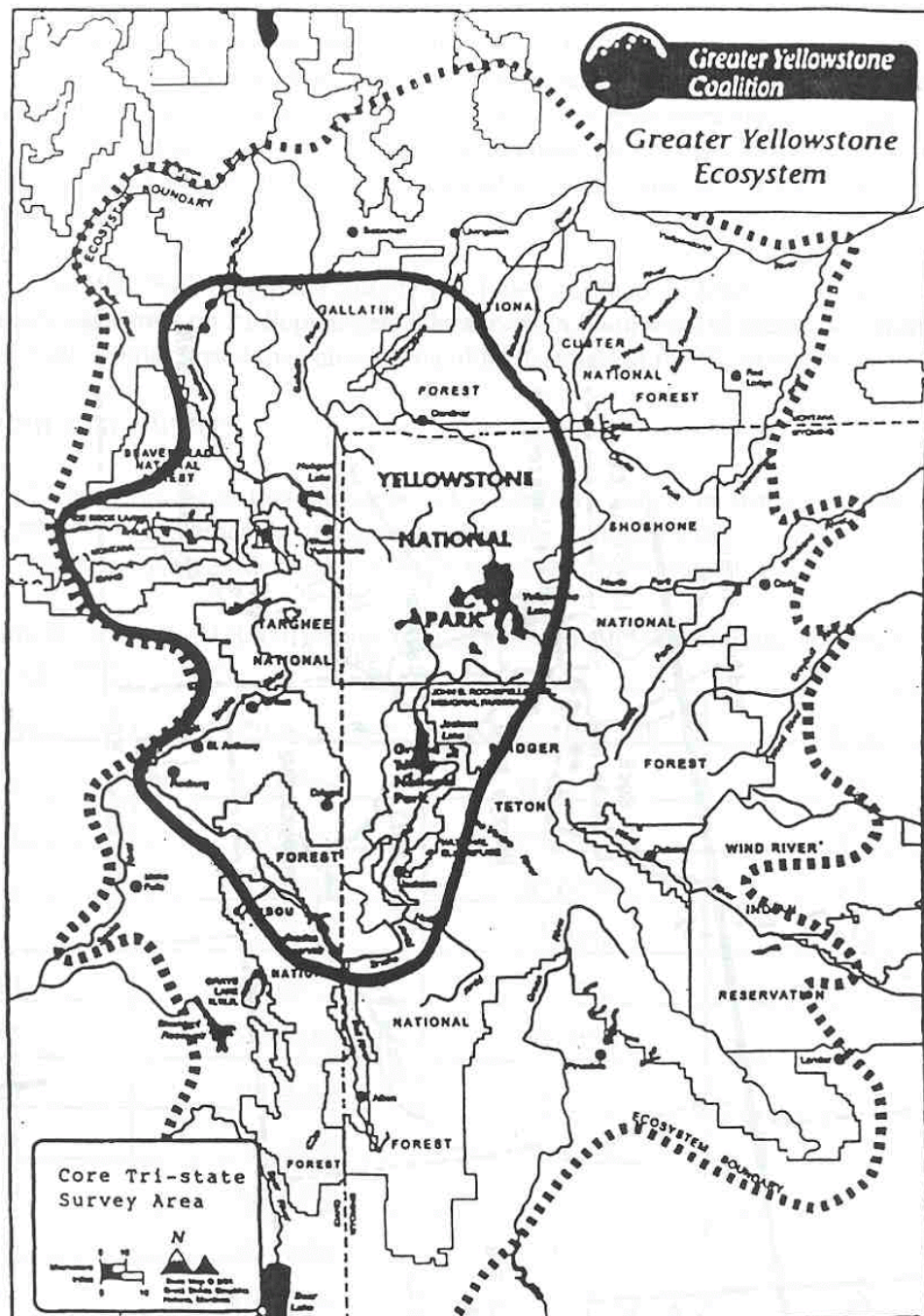


Fig. 2. Map showing the 'core' tri-state area of southeast Idaho, southwest Montana, and northwest Wyoming (provided by the Greater Yellowstone Coalition, Bozeman, Montana).



The Mid-winter Trumpeter Swan Survey is conducted annually in late January or early February. The survey is conducted cooperatively by several administrative entities and is intended to provide an annual assessment of the number of RMP trumpeter swans. Only data from 1972 to present, the time frame during which the Service has coordinated the survey, were analyzed for this report.

## METHODS

The survey generally is conducted within a relatively short time frame (i.e., 1 week) to reduce the possibility of counting swans more than once due to movements of birds among areas. Aerial cruise surveys generally are used to count numbers of swans in the tri-state area, Nevada, at Malheur NWR, and in the Summer Lake WMA and vicinity; ground surveys are used to count the number of swans in isolated pockets of habitat not covered by aerial surveys. During aerial surveys, data are collected by observers seated in a single-engine, fixed-winged aircraft. Flying altitude varies with changes in terrain and surface winds, but generally averages 30-60 m above ground level, and flight speed is between 135-155 kph. One to two observers and the pilot count white (i.e., adults and subadults) and gray (i.e., cygnets) swans in known or suspected habitats. Counts are not adjusted for birds present but not seen by aerial crews, and have an unknown and unmeasured sampling variance associated with them. Ground surveys are used to verify species composition of some swan flocks, because trumpeter and tundra (*C. columbianus*) swans are difficult to differentiate during aerial surveys. Efforts are made to identify and exclude tundra swans from the survey counts.

Annual estimates of abundance for Canadian Flocks are determined by subtracting the count of the RMP/U.S. Breeding Segment in the previous fall (e.g., U.S. Fish and Wildlife Service 2006a) from the Mid-winter count. For the estimate of the size of the Canadian Flocks to be accurate, several conditions must be met. First, all swans must be correctly identified to species. Second, the Mid-winter count and the fall count of swans in the RMP/U.S. Breeding Segment must be accurate. Additionally, we must assume that mortality in the RMP/U.S. Breeding Segment between the time of the fall and winter surveys is negligible. Because of problems inherent in surveying biological populations, these conditions probably are seldom met. Thus, this methodology for estimating the size of the RMP/Canadian Flocks likely leads to somewhat biased estimates of the composition of the RMP. However, the counts using this methodology generally track those from the quinquennial trumpeter swan survey (U.S. Fish and Wildlife Service 2006b), suggesting it produces a useful index to annual abundance for the Canadian Flocks.

To assess production for the RMP, we calculated the percentage of annual total swan counts that were cygnets. However, surveys in Nevada and Oregon did not separate counts into white birds and cygnets until 1992. Therefore, to allow an assessment over a longer time frame with data that are relatively comparable from year-to-year, we used only information from birds counted in the tri-state region. This subset contained a large majority (range = 87%-99%,  $\bar{x}$  = 95%) of the total RMP counts during 1972-2006. Counts used for analyses in this report are provided in Appendix A.



## RESULTS AND DISCUSSION

The 2007 Mid-winter survey was conducted between 21 January and 22 February. However, surveys in all areas except Montana were completed between 21 January and 1 February. In Montana, a pilot was not available during the first several days of the target survey period, and poor weather conditions precluded conducting the survey for the following 2.5 weeks. Because forecasts predicted weather was not going to improve, ground surveys were conducted on a portion of the Montana survey area during 21-22 February. Cloud cover was variable during the survey period, ranging from 0% to 100% depending on the survey area, but generally winds were light and temperatures very cold across most areas. Approximately 24 h of flight time and additional ground survey time were required to complete the survey.

Precipitation during December to February was 25% to 75% of average throughout much of the tri-state area (Joint Agricultural Weather Facility 2007). Water levels at 5 reservoirs (American Falls, Island Park, Jackson Lake, Palisades, and Minidoka Dam/Lake Walcott) cumulatively were at 70% of storage capacity on February 1 (data from U.S. Bureau of Reclamation 2007a), 11% above the level of last year and 8% above the 1972-2006 average (Fig. 3). This winter marked the first time since the winter of 1999-2000 that the cumulative water storage for these 5 reservoirs was above average. Together, these reservoirs comprise about 97% of the water-storage capacity for reservoirs listed in the Snake River Basin in eastern Idaho and extreme western Wyoming (U.S. Bureau of Reclamation 2007b). Snowpack as of 1 February throughout much of the tri-state area was generally 50-89% of normal, and <50% of normal in south-central Oregon and portions of northeastern Nevada (U.S. Department of Agriculture 2007).

The average streamflow on the Henrys Fork near Island Park Reservoir, Idaho, during 15 January to 15 February 2007 was 417 cfs, 7% above the 1972-2006 average for that recording station (U.S. Bureau of Reclamation 2007a) (Fig. 3). A very cold period preceded the surveys, and resulted in many wetlands freezing throughout the survey area (Appendix B). However, the December-February temperatures in the tri-state area were average or slightly warmer than average (Fig. 4) (Joint Agricultural Weather Facility 2007).

### Historical Trends

Methods used to estimate trends in rates of change in RMP abundance were detailed in a previous report (U.S. Fish and Wildlife Service 2003), and will not be reiterated here. Briefly, however, we used least-squares regression on log-transformed counts to assess rates of change in counts of swans over time. Counts from the current Mid-winter survey (2007) were compared to results from 1972-2006, a practice used in Service survey reports for other waterfowl (e.g., Wilkins et al. 2006, U.S. Fish and Wildlife Service 2006c). Because Nevada and Oregon did not separate total counts of swans into white birds and cygnets prior to 1992 (see above), analyses to assess trends for white birds and cygnets used only counts from the tri-state area.



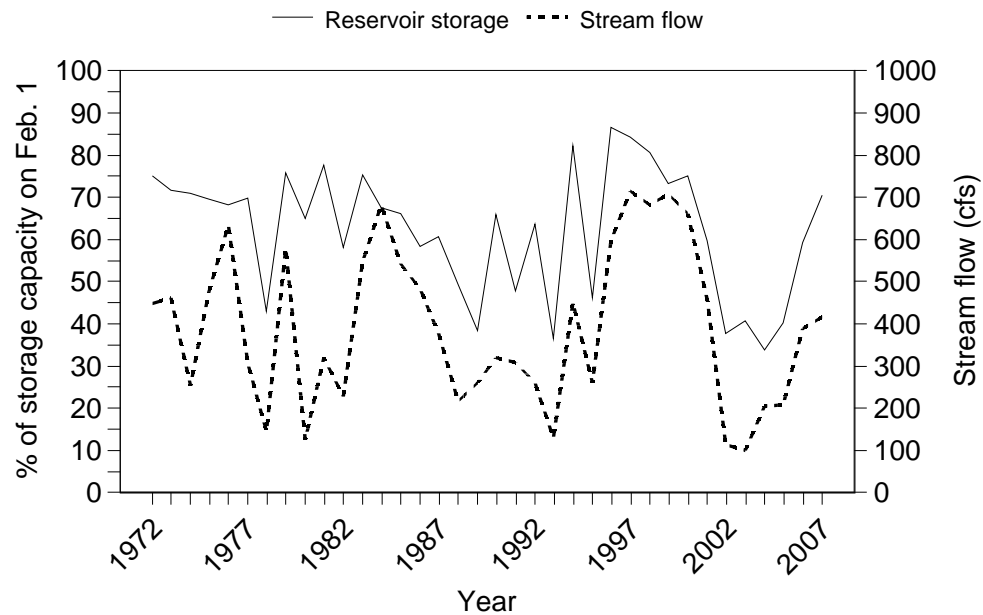


Fig. 3. Water storage for 5 reservoirs (see text) in the tri-state region on 1 February, and average streamflow between 15 January and 15 February on the Henrys Fork, 1972-2007.



Fig. 4. Departure of average temperature from normal ( $^{\circ}\text{F}$ ) during December 2006 to February 2007 (Joint Agricultural Weather Facility 2007).



The counts for total swans of the RMP suggested an increase ( $P < 0.01$ ) of about 6.0% per year during 1972-2006 (Table 1, Fig. 5). The number of white birds and cygnets counted in the tri-state region both increased ( $P < 0.01$ ) at 6.1% per year. Counts of birds in Montana (white birds + cygnets) increased slightly (+2.1% per year,  $P < 0.01$ ), whereas rates of growth for birds wintering in Idaho (+7.5% per year) and Wyoming (+7.4% per year) were much higher (Table 2, Fig. 6). Although the number of birds wintering in each of the 3 states in the tri-state region generally have increased since 1972, the distribution of birds among the states has changed substantially. Whereas during the 1970s and early 1980s about 36% of wintering swans were counted in Montana, only about 13% of the birds wintering in the tri-state area have been counted there during the last decade (Fig. 7). In contrast, the percentage of birds in Idaho has increased from about 53% to about 68% during that same time period. The percentage of birds counted in Wyoming during winter also has increased, from about 11% to 19%.

Counts of total swans wintering in Nevada have fluctuated over time, but suggest an increase ( $P = 0.04$ ) of about 1.1% per year during 1972-2006 (Table 2, Fig. 8). Counts in Nevada during the early 2000s generally were near historic highs. Trumpeter swans in Oregon primarily occur in 2 areas, Malheur NWR and the Summer Lake WMA and vicinity. Introductions of trumpeter swans to Malheur NWR began in the late 1930s; however, birds were not translocated to Summer Lake WMA until the winter of 1992. Analyzing trends for the Oregon Flock as a whole (Table 2) could lead to inappropriate inferences. Therefore, we analyzed data for Malheur NWR (1972-2006) separate from those for Summer Lake WMA. Results suggest a decline (-2.9% per year,  $P < 0.01$ ) for birds wintering at Malheur NWR (Fig. 8, Appendix A). At Summer Lake WMA, most birds were translocated to the area during winter and generally remained in the area for only a few months after being translocated (M. St. Louis, personal communication). Thus, in 1997, the winter following the termination of translocations to Summer Lake WMA, the number counted during the survey dropped sharply (Fig. 8). From 1997-2006, an average of about 26 birds have been observed during winter surveys (excluding years with incomplete surveys).

The percentage of the entire RMP estimated to be comprised of Canadian Flocks increased from about 19% during February of 1972 to 92% during February 2005, and then decreased slightly in 2006 (Table 3). The data fit a 2nd-order logarithm model ( $P < 0.01$ , adjusted  $R^2 = 0.96$ ), suggesting that the percentage may plateau near 90% (Fig. 9). The number of swans estimated to be from Canadian Flocks exhibited a fairly steady increase since the early 1980s, and was nearly 5,000 birds in 2006 (Table 3, Fig. 9).

### **Results from the 2007 survey**

During the 2007 winter survey, observers counted 4,701 trumpeter swans in the RMP, a decrease of 14% from the count of last winter (5,484) (Table 1). The number of white birds and cygnets decreased 14% and 25%, respectively, from counts last year. However, a number of issues related to the survey this winter biased the results. In Montana, only counts for the Hebgen Lake area and the Paradise Valley were conducted by aircraft. Areas of the Red Rock Lakes NWR and the Madison Valley were surveyed by ground observers one month later than in other survey areas, and



Table 1. Counts of trumpeter swans of the Rocky Mountain Population during winter, 1972-2007.

Year	Tri-state area			Oregon and Nevada <sup>a</sup>			Total RMP		
	White birds	Cygnets	Total	White birds	Cygnets	Total	White birds <sup>b</sup>	Cygnets <sup>b</sup>	Total
1972	c	c	616			91			707
1973	c	c	581 <sup>d</sup>			60			641
1974	553	156	709			61			770
1975	595	128	723			40			763
1976	623	102	725			55			780
1977	839	178	1017			46			1063
1978	695	179	874			27			901
1979	743	123	866			62			928
1980	767	172	939			86			1025
1981	1000	247	1247			98			1345
1982	952	266	1218			105			1323
1983	1025	207	1232			90			1322
1984	1128	332	1460			98			1558
1985	1326	190	1516			82			1598
1986	1304	299	1603			59			1662
1987	1196	386	1582			77			1659
1988	1314	408	1722			51			1773
1989	1452	291	1743			54			1797
1990	1591	416	2007			38			2045
1991	1589	342	1931			49			1980
1992	1642	397	2039	99	58	157	1741	455	2196
1993	1659	419	2078	121	36	157	1780	455	2235
1994	1753	543	2296	127	101	228	1880	644	2524
1995	2012	668	2680	93	30	123	2105	698	2803
1996	2129	580	2709	163	64	227	2292	644	2936
1997	2179	407	2586	77	18	95	2256	425	2681
1998 <sup>e</sup>	1756	307	2063	64	29	93	1820	336	2156
1999	2698	772	3470	45 <sup>f</sup>	10 <sup>f</sup>	71	2743 <sup>f</sup>	782 <sup>f</sup>	3541
2000	2694	746	3440	50 <sup>f</sup>	15 <sup>f</sup>	84	2744 <sup>f</sup>	761 <sup>f</sup>	3524
2001	3198	719	3917	47 <sup>f</sup>	11 <sup>f</sup>	90	3245 <sup>f</sup>	730 <sup>f</sup>	4007
2002	3814	546	4360	48 <sup>f</sup>	7 <sup>f</sup>	67	3862 <sup>f</sup>	553 <sup>f</sup>	4427
2003 <sup>g</sup>	3365	532	3897	62	15	77	3427	547	3974
2004 <sup>g</sup>	3785	746	4531	46	7	53	3831	753	4584
2005	4147	1143	5290	59	12	71	4206	1155	5361
2006	4203	1209	5412	58	14	72	4261	1223	5484
2007 <sup>h</sup>	3604	893	4619	56	26	82	3660	919	4701

<sup>a</sup> Total counts not separated into white birds and cygnets prior to 1992.

<sup>b</sup> Not calculated prior to 1992 because of no counts for Oregon and Nevada.

<sup>c</sup> Not provided because counts for Yellowstone National Park not separated into white birds and cygnets.

<sup>d</sup> In Wyoming only Yellowstone National Park surveyed.

<sup>e</sup> 1998 counts for the Tri-state area and Total RMP are biased low because aerial survey of Yellowstone National Park not conducted due to hazardous weather; counted by snowmobile with incomplete coverage.

<sup>f</sup> Counts biased low because white-bird and cygnet counts for Malheur NWR not available.

<sup>g</sup> Oregon/Nevada and Total RMP counts biased low due to incomplete surveys at Summer Lake WMA.

<sup>h</sup> White bird and cygnet counts for Tri-state area and Total RMP biased low because 122 birds in Idaho were not classified as white birds or cygnets.



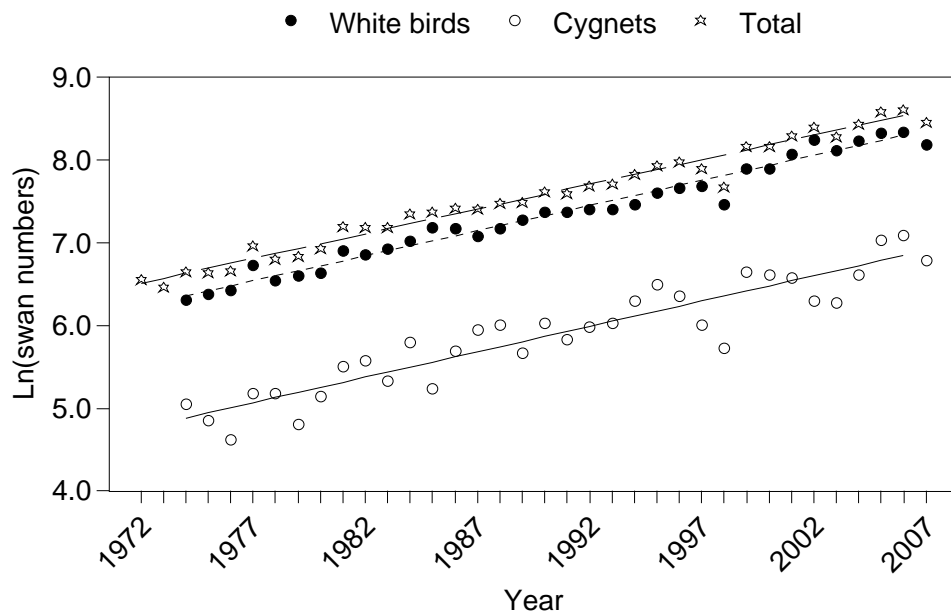


Fig. 5. Rates of change for counts of swans in the RMP during the Mid-winter Trumpeter Swan Survey, 1972-2007 (dotted and solid lines depict trends for white birds and cygnets, respectively, for swans counted in the tri-state region [see text]; dashed line depicts total RMP swans).

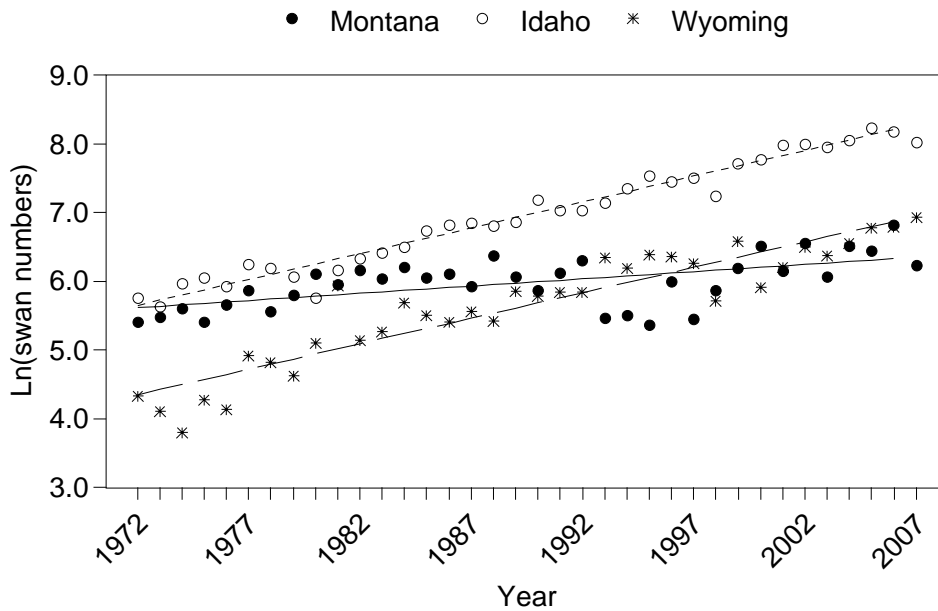


Fig. 6. Rates of change for counts of total swans in states of the tri-state region during the Mid-winter Trumpeter Swan Survey, 1972-2007 (solid, dotted, and dashed lines represent trends for Montana, Idaho, and Wyoming, respectively).



Table 2. Counts of trumpeter swans of the Rocky Mountain Population in individual states during winter, 1972-2007.

Year	Montana			Idaho			Wyoming			Oregon <sup>a</sup>			Nevada <sup>a</sup>		
	White birds	Cygnets	Total	White birds	Cygnets	Total	White birds	Cygnets	Total	White birds	Cygnets	Total	White birds	Cygnets	Total
1972	209	14	223	303	14	317	.b	b	76			50			41
1973	212	28	240	222	58	280	b	b	61 <sup>c</sup>			32			28
1974	233	40	273	282	109	391	38	7	45			36			25
1975	192	32	224	333	94	427	70	2	72			15			25
1976	253	34	287	308	67	375	62	1	63			30			25
1977	315	43	358	395	126	521	129	9	138			17			29
1978	194	68	262	392	96	488	109	15	124			7			20
1979	304	26	330	353	81	434	86	16	102			41			21
1980	374	80	454	250	70	320	143	22	165			65			21
1981	352	36	388	370	110	480	278	101	379			77			21
1982	390	90	480	429	137	566	133	39	172			65			40
1983	363	59	422	493	122	615	169	26	195			52			38
1984	389	109	498	503	162	665	236	61	297			63			35
1985	393	31	424	701	144	845	232	15	247			51			31
1986	380	73	453	744	183	927	180	43	223			33			26
1987	314	63	377	690	255	945	192	68	260			49			28
1988	438	153	591	694	209	903	182	46	228			24			27
1989	342	90	432	817	141	958	293	60	353			36			18
1990	319	38	357	1025	300	1325	247	78	325			23			15
1991	385	70	455	918	211	1129	286	61	347			31			18
1992	438	114	552	892	249	1141	312	34	346	67	56	123	32	2	34
1993	168	70	238	1020	246	1266	471	103	574	91	36	127	30	0	30
1994	199	48	247	1164	397	1561	390	98	488	114	94	208	13	7	20
1995	153	61	214	1391	475	1866	468	132	600	72	27	99	21	3	24
1996	319	82	401	1336	390	1726	474	108	582	140	49	189	23	15	38
1997	204	30	234	1555	272	1827	420	105	525	46	9	55	31	9	40
1998	290	68	358	1200	200	1400	266 <sup>d</sup>	39 <sup>d</sup>	305 <sup>d</sup>	31	7	38	33	22	55
1999	335	153	488	1754	500	2254	609	119	728	16 <sup>e</sup>	2 <sup>e</sup>	34	29	8	37
2000	519	155	674	1881	513	2394	294	78	372	15 <sup>e</sup>	6 <sup>e</sup>	40	35	9	44
2001	373	96	469	2404	549	2953	421	74	495	16 <sup>e</sup>	7 <sup>e</sup>	55	31	4	35
2002	600	104	704	2636	357	2993	578	85	663	7 <sup>e</sup>	5 <sup>e</sup>	24	41	2	43
2003	375	58	433	2490	382	2872	500	92	592	28 <sup>f</sup>	8 <sup>f</sup>	36 <sup>f</sup>	34	7	41
2004	583	92	675	2591	563	3154	611	91	702	8 <sup>f</sup>	0 <sup>f</sup>	8 <sup>f</sup>	38	7	45
2005	508	119	627	2954	828	3782	685	196	881	27	10	37	32	2	34
2006	713	211	924	2714	873	3587	776	125	901	36	14	50	22	0	22
2007	466	49	515	2294 <sup>g</sup>	664 <sup>g</sup>	3080	844	180	1024	38	16	54	18	10	28

<sup>a</sup> Counts for Oregon and Nevada were not separated into white birds and cygnets until 1992.

<sup>b</sup> Not provided because counts for Yellowstone National Park not separated into white birds and cygnets.

<sup>c</sup> Counts for Yellowstone National Park only; remainder of Wyoming not surveyed.

<sup>d</sup> Counts for Wyoming biased low because aerial survey of Yellowstone National Park not conducted due to hazardous weather; counted by snowmobile with incomplete coverage.

<sup>e</sup> Counts biased low because white-bird and cygnet counts for Malheur NWR not available.

<sup>f</sup> Counts biased low due to incomplete surveys at Summer Lake WMA.

<sup>g</sup> Counts biased low because 122 birds not classified as either white birds or cygnets.



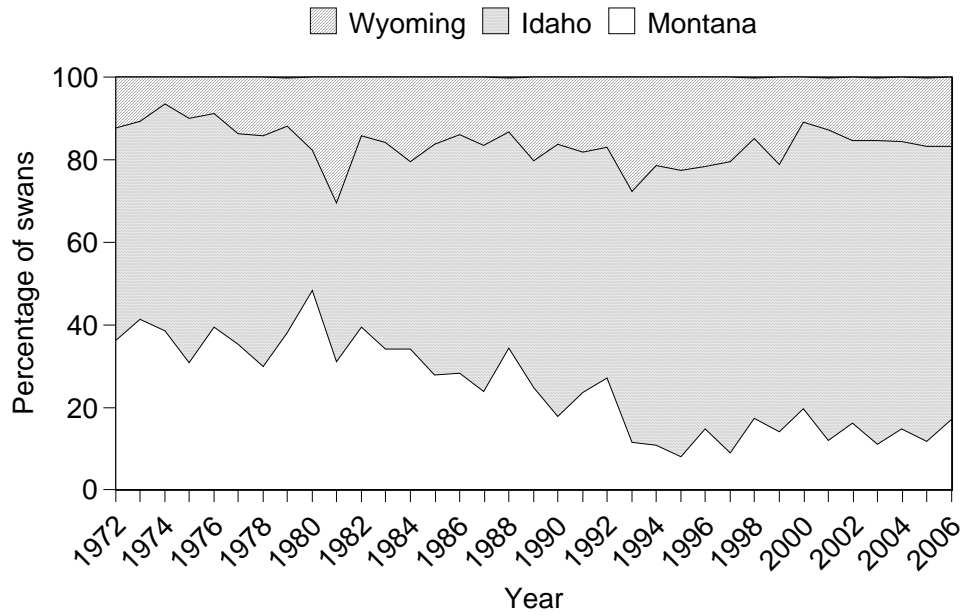


Fig. 7. Proportions of total swans counted in each of the states comprising the tri-state region during the Mid-winter Trumpeter Swan Survey, 1972-2006.

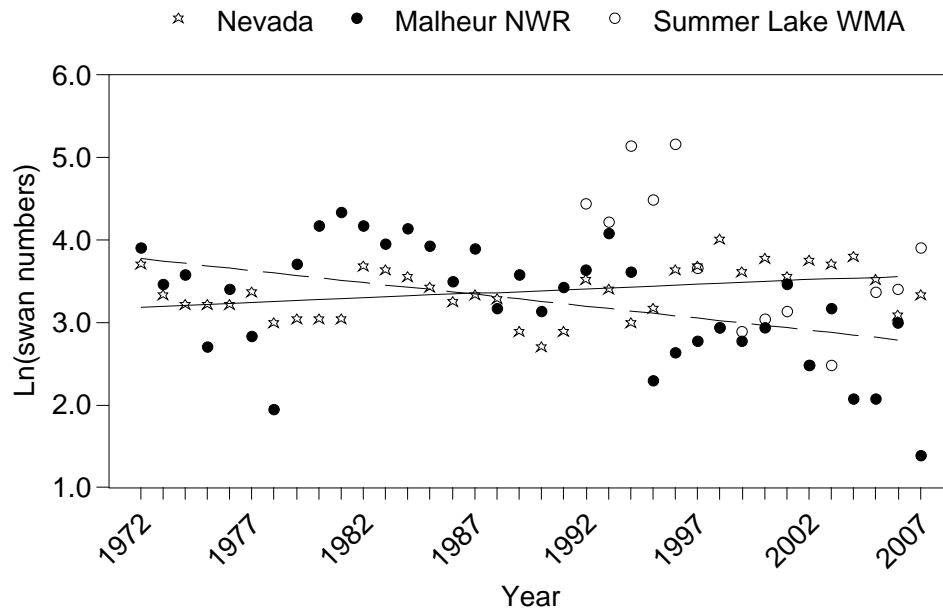


Fig. 8. Rates of change in counts of total swans in Nevada (stars and solid line) and Oregon (Malheur NWR [closed circles and dashed line] and Summer Lake WMA [open circles]) during the Mid-winter Trumpeter Swan Survey, 1972-2007. Data for Summer Lake WMA in 2002 and 2003 are from incomplete surveys.



Table 3. Estimates of swan abundance for flocks comprising the Rocky Mountain Population of Trumpeter swans, 1972-2007.

Year	Mid-winter count	U.S. Breeding Flocks <sup>a</sup>	Canadian Flocks	Percent Canadian Flocks
1972	707	572	135	19.1
1975	763	581	182	23.9
1978	901	544	357	39.6
1981	1345	582	763	56.7
1984	1558	547	1011	64.9
1985	1598	563	1035	64.8
1986	1662	575	1087	65.4
1987	1659	452	1207	72.8
1988	1773	611	1162	65.5
1989	1797	659	1138	63.3
1990	2045	598	1447	70.8
1991	1980	626	1354	68.4
1992	2196	555	1641	74.7
1993	2235	563	1672	74.8
1994	2524	354	2170	86.0
1995	2803	454	2349	83.8
1996	2936	427	2509	85.5
1997	2681	458	2223	82.9
1998	2156	427	1729	80.2
1999	3541	469	3072	86.8
2000	3524	417	3107	88.2
2001	4007	481	3526	88.0
2002	4427	487	3940	89.0
2003	3974	371	3603	90.7
2004	4584	417	4167	90.9
2005	5361	417	4944	92.2
2006	5484	510	4974	90.7
2007	4701	507	4194	89.2

<sup>a</sup> From U.S. Fish and Wildlife Service 2006a. Counts are from the previous calendar year (e.g., the 2007 value is from the Fall 2006 survey).



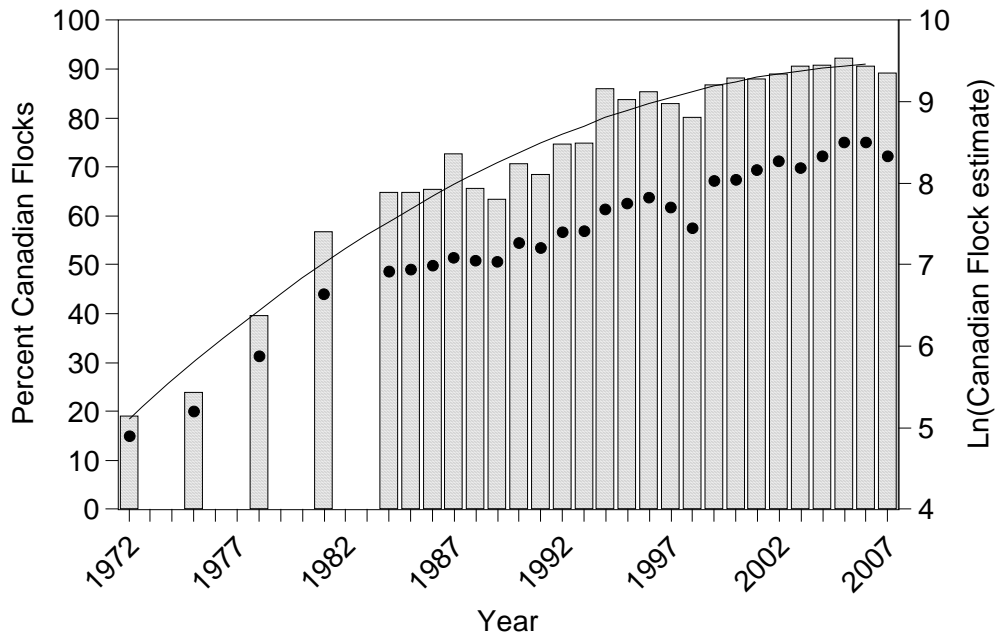


Fig. 9. Percent (bars and solid line) and counts (solid dots) of the entire RMP estimated to be comprised of Canadian Flocks during the Mid-winter Trumpeter Swan Survey, 1972-2007.

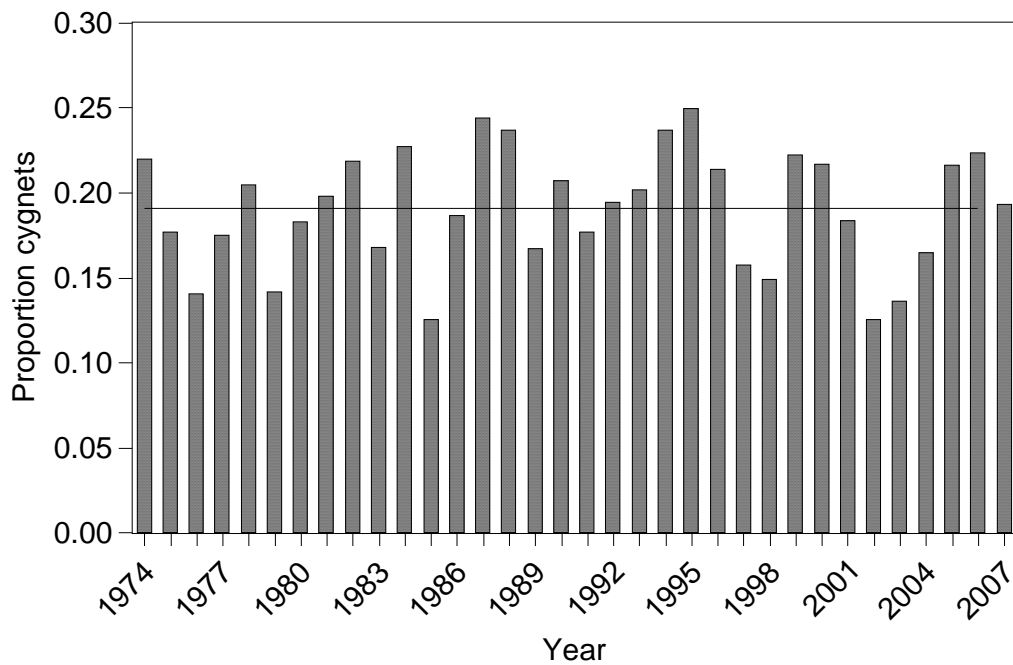


Fig. 10. Proportion of cygnets counted in the tri-state region during the Mid-winter Trumpeter Swan Survey, 1974-2007. The solid line depicts the 1974-2006 average.



several areas historically surveyed were not visited this year. Over the last 5 years, counts for areas not surveyed this winter averaged only about 95 birds, whereas the count for Montana was about 400 birds lower than last year. Thus, not all of the difference can be explained by the absence of counts in those areas. However, detectability also is lower for ground-based surveys, so perhaps a smaller proportion of birds was seen during ground observations relative to aerial counts. If birds were missed due to this effect, even more of the difference between the 2 counts would be explained. Also, in Idaho, ground observers counted 122 swans in the Spring Creek area, but did not record the fraction that were white birds. Thus, the 2007 total count for Idaho does not equal the sum of the white bird and cygnet counts (Appendix A). Because the birds were not segregated into age groups, counts for both white birds and cygnets in Idaho and for the total RMP are biased low.

The total number of swans in Wyoming increased 14% to a record-high count for the third consecutive year during 2007, whereas counts in Montana and Idaho decreased 44% and 14%, respectively (Table 2). Of the birds wintering in the tri-state area during winter 2007, about 11% were in Montana, 67% were in Idaho, and 22% were counted in Wyoming. Again, the values for Montana are biased low due to incomplete survey coverage.

In addition to the official counts for states in the tri-state areas, several birds were seen in areas of Wyoming not surveyed in years past. Three white swans were observed at Renner Reservoir, and 2 white swans with 2 cygnets were seen on the North Platte River near Gray's Reef Dam. Thirty swans (22 white birds and 8 cygnets) also were counted in the Round Valley of Utah during the survey.

The number of swans in Nevada (28) was slightly higher than that of last year, but in general lower than counts from recent winters (Table 2). Normal ice coverage existed on the marsh at Ruby Lake NWR, and open water was available on spring-fed ponds and spring outflow areas. Ten cygnets were observed during the survey this winter, the highest count since 1998; however, the number of white birds was the second lowest recorded. The total count was similar to the long-term average (31 swans). The number of swans counted at Malheur NWR (4) was lowest ever recorded (Appendix A). Much of the refuge wetland habitat was frozen. The count at SLWMA (50) was 67% higher than that of last year and the highest recorded since the termination of winter releases in the area.

The estimated number of swans from Canadian Flocks was 4,194 birds, about 800 fewer swans compared to the estimate from winter 2006. The estimate suggested about 89% of the RMP counted in winter 2007 was comprised of swans from Canadian Flocks (Table 3, Fig. 9), a value slightly lower than values from the last few winter surveys.

The proportion of cygnets for swans counted in the tri-state region during winter 2007 was 0.193. This value was essentially the same (+1%) as the 1974-2006 average (0.191) (Fig. 10). However, because some swans counted in Idaho were not classified as either white birds or cygnets (see above), the 2007 value is biased to an unknown degree.



In summary, RMP trumpeter swans appeared to increase by about 6.1% annually between 1972 and 2006. Most of the increase over that time was attributable to increases in the number of birds in the Canadian Flocks, which estimates suggest comprise approximately 90% of the population. Although estimates of the size of the Canadian Flocks from the winter RMP surveys typically are greater than those from the quinquennial surveys, the estimates appear to track each other (U.S. Fish and Wildlife Service 2006b). This result suggests that annual estimates of the size of the Canadian Flocks from the winter RMP surveys are reasonable, but may slightly overestimate their abundance.

The survey results from the 2007 Mid-winter survey must be viewed with caution. Survey methodology, coverage, and timing all departed significantly from standard procedures, and influenced results to an unknown degree. The lower counts in Montana are due largely to reduced survey coverage, and perhaps also to the lateness of the survey in the few areas where ground counts were conducted. The lower number observed in Idaho was not influenced by survey methodology or timing, so potential causes for the low count are more speculative. The aerial observer in Idaho changed this year, but the biologist who conducted the surveys prior to this winter does not believe there was much of an observer effect, if any, on the results. However, swans recently have been observed feeding in fields more often than in the past, and not all of these field areas are included in the survey route. Given the mild temperatures during the winter 2007, combined with the relatively low snowpack, perhaps more swans were feeding in fields this winter than occurs in a typical winter, and were missed during the survey. Increased winter mortality did not appear to be a factor influencing the counts, with mortality in Wyoming quite low compared to last year.

Given the caveats above, the number of RMP swans counted during the 2007 Mid-winter survey decreased 14% from that counted during winter 2006. After two consecutive years of above-average production, the proportion of young in the winter count was about average for the RMP as a whole. The number of birds presumed to be from Canadian Flocks decreased this year, but still comprised almost 90% of the RMP. The relatively mild winter likely resulted in lower overwinter mortality than occurs in average years.

## **ACKNOWLEDGMENTS**

Personnel who conducted the survey are listed in Appendix C. The survey is a collaborative effort among Red Rock Lakes NWR, Migratory Birds and State Programs -- Mountain-Prairie Region of the U.S. Fish and Wildlife Service, Southeast Idaho Refuge Complex, National Elk Refuge, Harriman State Park, Idaho Department of Fish and Game, Grand Teton National Park, Yellowstone National Park, Wyoming Game and Fish Department, Ruby Lake NWR, Malheur NWR, and the Shoshone-Bannock Tribes. Additionally, L. Hanauska-Brown, B. Waterbury, M. Wackenhut, D. Christopherson, K. Cameron, S. Bouffard, and S. Tolentino assisted with counts in Idaho. A. Araya, T. McEneaney, J. Mackay, C. Mitchell, S. Patla, R. Roy, M. St. Louis, and J. Warren reviewed information contained in this document, but conclusions are attributable only to the author.



## LITERATURE CITED

- Banko, W.E. 1960. The trumpeter swan: Its history, habits, and population in the United States. North American Fauna, No. 63. U.S. Fish and Wildlife Service, Washington, D.C. 214pp.
- Gale, R.S., E.O. Garton, and I.J. Ball. 1988. The history, ecology and management of the Rocky Mountain Population of trumpeter swans. Unpublished report. U.S. Fish and Wildlife Service, Montana Cooperative Wildlife Research Unit, Missoula. 532pp.
- Joint Agricultural Weather Facility. 2007. Weekly Weather and Crop Bulletin. Vol. 94, No. 12. URL:[http://www.usda.mannlib.cornell.edu/usda/waob/weather\\_weekly//2000s/2007/weather\\_weekly-03-21-2007.pdf](http://www.usda.mannlib.cornell.edu/usda/waob/weather_weekly//2000s/2007/weather_weekly-03-21-2007.pdf).
- Moser, T.J. 2006. The 2005 North American trumpeter swan survey. U.S. Fish and Wildlife Service, Division of Migratory Bird Management, Denver, CO. 14pp.
- Pacific Flyway Study Committee. 2002. RMP Trumpeter Swan Implementation Plan. U.S. Fish and Wildlife Service, Portland, OR. 27pp.
- U.S. Bureau of Reclamation. 2007a. Pacific Northwest Region hydromet historical data access. URL:<http://www.usbr.gov/pn/hydromet/arcread.html>.
- U.S. Bureau of Reclamation. 2007b. Pacific Northwest Region end-of-month water conditions. URL:<http://www.usbr.gov/pn/hydromet/denver.html>.
- U.S. Department of Agriculture. 2007. Mountain snowpack as of February 1, 2007. URL:<ftp://ftp.wcc.nrcs.usda.gov/support/water/westwide/snowpack/wy2007/snow0702.gif>.
- U.S. Fish and Wildlife Service. 2003. Trumpeter swan survey of the Rocky Mountain Population, Winter 2003. Division of Migratory Birds and State Programs, Denver, CO. 28pp.
- U.S. Fish and Wildlife Service. 2006a. Trumpeter swan survey of the Rocky Mountain Population, U.S. Breeding Segment, Fall 2006. Migratory Birds and State Programs, Denver, CO. 29pp.
- U.S. Fish and Wildlife Service. 2006b. Trumpeter swan survey of the Rocky Mountain Population, Winter 2006. Division of Migratory Birds and State Programs, Denver, CO. 27pp.
- U.S. Fish and Wildlife Service. 2006c. Waterfowl population status, 2006. U.S. Department of the Interior, Washington, D.C. 60pp.
- Wilkins, K.A., M.C. Otto, and M.D. Koneff. 2006. Trends in duck breeding populations, 1955-2006. U.S. Fish and Wildlife Service Administrative Report, Division of Migratory Bird Management, Laurel, MD. 24pp.



Appendix A. Counts of trumpeter swans of the Rocky Mountain Population during winter, 1972-2007.

Year	Montana			Idaho			Wyoming (outside Yellowstone NP)		
	White birds	Cygnets	Total	White birds	Cygnets	Total	White birds	Cygnets	Total
1972	209	14	223	303	14	317	16	4	20
1973	212	28	240	222	58	280	a	a	a
1974	233	40	273	282	109	391	7	0	7
1975	192	32	224	333	94	427	40	2	42
1976	253	34	287	308	67	375	30	1	31
1977	315	43	358	395	126	521	86	0	86
1978	194	68	262	392	96	488	63	4	67
1979	304	26	330	353	81	434	15	3	18
1980	374	80	454	250	70	320	63	6	69
1981	352	36	388	370	110	480	37	10	47
1982	390	90	480	429	137	566	76	19	95
1983	363	59	422	493	122	615	81	12	93
1984	389	109	498	503	162	665	87	11	98
1985	393	31	424	701	144	845	78	8	86
1986	380	73	453	744	183	927	91	25	116
1987	314	63	377	690	255	945	85	18	103
1988	438	153	591	694	209	903	115	28	143
1989	342	90	432	817	141	958	197	39	236
1990	319	38	357	1025	300	1325	169	46	215
1991	385	70	455	918	211	1129	225	47	272
1992	438	114	552	892	249	1141	204	30	234
1993	168	70	238	1020	246	1266	293	64	357
1994	199	48	247	1164	397	1561	253	74	327
1995	153	61	214	1391	475	1866	327	91	418
1996	319	82	401	1336	390	1726	344	84	428
1997	204	30	234	1555	272	1827	346	102	448
1998	290	68	358	1200	200	1400	109	15	124
1999	335	153	488	1754	500	2254	317	71	388
2000	519	155	674	1881	513	2394	207	65	272
2001	373	96	469	2404	549	2953	368	63	431
2002	600	104	704	2636	357	2993	447	72	519
2003	375	58	433	2490	382	2872	354	58	412
2004	583	92	675	2591	563	3154	462	58	520
2005	508	119	627	2954	828	3782	561	166	727
2006	713	211	924	2714	873	3587	655	111	766
2007	466	49	515	2294 <sup>h</sup>	664 <sup>h</sup>	3080	700	155	855

<sup>a</sup> Counts not available.

<sup>b</sup> Total counts not separated into white birds and cygnets prior to 1992.

<sup>c</sup> Swans first translocated to Summer Lake WMA in 1992.

<sup>d</sup> Count biased low because aerial survey not conducted due to hazardous weather; snowmobile count with incomplete coverage only.

<sup>e</sup> Count biased low due to incomplete survey coverage.

<sup>h</sup> Counts biased low because 122 birds not classified as white birds or cygnets.



Appendix A. (cont.)

Year	Yellowstone NP			Malheur NWR <sup>b</sup>			Summer Lake WMA <sup>c</sup>			Nevada <sup>b</sup>		
	White birds	Cygnets	Total	White birds	Cygnets	Total	White birds	Cygnets	Total	White birds	Cygnets	Total
1972	a	a	56			50						41
1973	a	a	61			32						28
1974	31	7	38			36						25
1975	30	0	30			15						25
1976	32	0	32			30						25
1977	43	9	52			17						29
1978	46	11	57			7						20
1979	71	13	84			41						21
1980	80	16	96			65						21
1981	241	91	332			77						21
1982	57	20	77			65						40
1983	88	14	102			52						38
1984	149	50	199			63						35
1985	154	7	161			51						31
1986	89	18	107			33						26
1987	107	50	157			49						28
1988	67	18	85			24						27
1989	96	21	117			36						18
1990	78	32	110			23						15
1991	61	14	75			31						18
1992	108	4	112	25	13	38	42	43	85	32	2	34
1993	178	39	217	44	15	59	47	21	68	30	0	30
1994	137	24	161	30	7	37	84	87	171	13	7	20
1995	141	41	182	9	1	10	63	26	89	21	3	24
1996	130	24	154	11	3	14	129	46	175	23	15	38
1997	74	3	77	11	5	16	35	4	39	31	9	40
1998	157 <sup>d</sup>	24 <sup>d</sup>	181 <sup>d</sup>	13	6	19	18	1	19	33	22	55
1999	292	48	340	a	a	16	16	2	18	29	8	37
2000	87	13	100	a	a	19	15	6	21	35	9	44
2001	53	11	64	a	a	32	16	7	23	31	4	35
2002	131	13	144	a	a	12	7 <sup>e</sup>	5 <sup>e</sup>	12 <sup>e</sup>	41	2	43
2003	146	34	180	19	5	24	9 <sup>e</sup>	3 <sup>e</sup>	12 <sup>e</sup>	34	7	41
2004	149	33	182	8	0	8	a	a	a	38	7	45
2005	124	30	154	8	0	8	19	10	29	32	2	34
2006	121	14	135	15	5	20	21	9	30	22	0	22
2007	144	25	169	4	0	4	34	16	50	18	10	28

<sup>a</sup> Counts not available.

<sup>b</sup> Total counts not separated into white birds and cygnets prior to 1992.

<sup>c</sup> Swans first translocated to Summer Lake WMA in 1992.

<sup>d</sup> Count biased low because aerial survey not conducted due to hazardous weather; snowmobile count with incomplete coverage only.

<sup>e</sup> Count biased low due to incomplete survey coverage.



Appendix B. Site-specific counts of trumpeter swans of the Rocky Mountain Population during the Mid-winter Trumpeter Swan Survey, 2007.

State or Area	White birds	Cygnets	Total	Pilot/observer/notes
<b>Montana</b>				
<i>Hebgen Lake area</i>				
Cougar Creek	a			
Between Quake Lake and Hebgen Lake				
Madison River Arm	163	13	176	P: R. Stradley; O: T. McEneaney (1/21)
North Spring (Grayling Arm)	56	9	65	P: R. Stradley; O: T. McEneaney (1/21)
South Fork Arm	121	9	130	P: R. Stradley; O: T. McEneaney (1/21)
<b>Subtotal</b>	<b>340</b>	<b>31</b>	<b>371</b>	
<i>Madison River Valley</i>				
Odell Creek Area				
Walsh Ponds (south)1				
Walsh Ponds (north)1				
Madison River, south of Ennis				
Madison River, north of Ennis				
Ennis Lake	24	1	25	Ground survey by J. Warren (2/21)
<b>Subtotal</b>	<b>24</b>	<b>1</b>	<b>25</b>	
<i>Chain of Lakes</i>				
Cliff Lake				
Wade Lake				
Goose Lake				
Smith Creek (Hidden Lake outlet)				
<b>Subtotal</b>	<b>0</b>	<b>0</b>	<b>0</b>	
<i>Centennial Valley/Red Rock Lakes NWR</i>				
Red Rock River below Lower Lake Dam				
MacDonald Pond	13	5	18	Ground survey by J. Warren (2/22)
Culver Pond	46	9	55	Ground survey by J. Warren (2/22)
Elk Springs Creek				
Swan Lake				
Shambow Pond	2	0	2	Ground survey by J. Warren (2/22)
Red Rock River, Lima				
<b>Subtotal</b>	<b>61</b>	<b>14</b>	<b>75</b>	
<i>Paradise Valley</i>				P: R. Stradley; O: T. McEneaney (1/21)
Armstrong's Spring Creek	11	1	12	
Bailey's	0	0	0	
Brockway	0	0	0	
DePuys	23	1	24	
Brandis	1	0	1	
Nelson's Spring Creek	0	0	0	



Sacagawea Park	0	0	0	
Yellowstone River 1 mile north of Emigrant	0	0	0	
Beaver Creek	2	0	2	
Yellowstone River - 6 mile	0	0	0	
Yellowstone River - Pray	0	0	0	
Dana's	4	1	5	
<b>Subtotal</b>	<b>41</b>	<b>3</b>	<b>44</b>	
<b>Wyoming</b>				
<i>Upper Snake River (Flagg Ranch to Wilson Bridge)</i>				P: D. Stinson; O: S. Patla (1/30,31)
Polecat Creek	3	1	4	Slough ~50% frozen
Flagg Ranch to Jackson Lake	0	0	0	River open to just south of Steamboat Mt.
Jackson Lake	0	0	0	100% frozen to dam
Jackson Lake to Moran Junction	13	4	17	Water in Oxbow completely frozen
Moran Junction to Deadman's	8	0	8	Shelf and pancake ice
Deadman's to Moose	35	3	38	Abundant pancake ice
Moose to Gros Ventre Junction	32	10	42	
Gros Ventre Junction area	12	5	17	
Gros Ventre Junction to Wilson Bridge	28	9	37	
Gros Ventre River, Highway 89 to Snake River	0	0	0	Mostly frozen except at confluence w/ Snake R.
<b>Subtotal</b>	<b>131</b>	<b>32</b>	<b>163</b>	
<i>Gros Ventre River upriver of Kelly</i>				
Kelly Warm Springs, Grand Teton National Park	0	0	0	
Lower Slide Lake	0	0	0	
Upper Gros Ventre	0	0	0	
<b>Subtotal</b>	<b>0</b>	<b>0</b>	<b>0</b>	
<i>Lower Snake River (Wilson Bridge to Alpine)</i>				
Wilson Bridge to South Park Bridge	49	8	57	
Evan's Gravel pit ponds	0	0	0	Frozen
South Park Bridge to Hoback	0	0	0	Two anglers south of Swinging Bridge
North Wilson	6	0	6	
Fish Creek, Wilson to Snake River	71	10	81	Includes spring creeks and some open ponds
Boyles Hill area	14	2	16	
Spring Creek	44	7	51	
Crane Creek	5	1	6	Some of Crane Creek included in total
Lower Flat Creek, Snake River to Jackson	33	10	43	
Rafter J Ponds	0	0	0	
Valley Springs, Captive Swan Pond/Pen Highway 89	6	2	8	
Hoback to Astoria Bridge	0	0	0	Much pancake ice
Astoria Bridge-Elbow	12	6	18	Shelf ice and some pancake ice
Elbow to Alpine/Palisades Reservoir	1	0	1	60% frozen
Bailey Lake	17	3	20	Small bay open
Kelly Swan Facility	1	1	2	



Bondurant pond near Hoback River	4	0	4	
<b>Subtotal</b>	<b>263</b>	<b>50</b>	<b>313</b>	
<i>National Elk Refuge</i>				
Flat Creek main marsh	12	0	12	Most ponds and marsh frozen
Gros Ventre River, Kelly to Highway 89	11	2	13	5 at Bills' Bayou
Romney pond area	0	0	0	
Lost Spring	3	0	3	85% frozen
<b>Subtotal</b>	<b>26</b>	<b>2</b>	<b>28</b>	
<i>Salt River (Alpine to Afton)</i>				
Palisades Reservoir, WY Alpine	0	0	0	Frozen
Palisades Reservoir to Freedom Road	37	6	43	River frozen in places
Freedom Road to Narrows	17	8	25	
Thayne area	9	0	9	
Narrows to Grover/Auburn Highway	41	5	46	
Grover/Auburn Highway to Swift Creek	54	16	70	
Swift Creek to Headwaters	0	0	0	Partially frozen
<b>Subtotal</b>	<b>158</b>	<b>35</b>	<b>193</b>	
<i>Pinedale</i>				
New Fork Boulder to Pinedale	0	0	0	
Boulder Fish Hatchery	0	0	0	
Daniel Fish Hatchery/Forty Rod Creek	17	1	18	
<b>Subtotal</b>	<b>17</b>	<b>1</b>	<b>18</b>	
<i>Green River (Warren Bridge to Highway 28 Bridge)</i>				
Fontenelle Dam-CCC Bridge	0	0	18	
CCC Bridge to Pilot Farm	99	29	128	
Pilot Farm-Refuge Headquarters	0	0	0	
Refuge to Big Sandy	0	0	0	Frozen
Big Sandy to Big Island	0	0	0	Frozen
Big Island to Green River, WY	0	0	0	
Flaming Gorge Reservoir	0	0	0	Frozen
<b>Subtotal</b>	<b>99</b>	<b>29</b>	<b>128</b>	
<i>Dubois area</i>				
Wind River and spring ponds, Dubois	0	0	0	
Dinwoody Lake	2	0	2	
Bull Lake	3	3	6	
Wind River, Dinwoody to Crowheart	1	3	4	
<b>Subtotal</b>	<b>6</b>	<b>6</b>	<b>12</b>	
<i>Yellowstone National Park</i>				
Slough Creek	0	0	0	P: R. Stradley; O: T. McEneaney (1/21)
Tern Lake	13	0	13	
White Lake	0	0	0	Frozen
Beach Springs Lagoon	0	0	0	



Shoshone Geyser Basin	0	0	0	
Lewis River	0	0	0	
Buela Lake	3	0	3	
Yellowstone River	25	0	25	
Lewis - Shoshone Channel	0	0	0	
Lewis Lake	2	1	3	
Falls River	1	0	1	
Shoshone Lake	0	0	0	
Bechler Lake	9	0	9	
Bourndary Creek	8	2	10	
Bechler River	2	2	4	
Firehole River	1	0	1	
Madison River	64	11	75	
Richard's Pond	5	8	13	
Gibbon Meadow	11	1	12	
Nymph Lake	0	0	0	
Elk Park	0	0	0	
North Twin Lake	0	0	0	
<b>Subtotal</b>	<b>144</b>	<b>25</b>	<b>169</b>	
<b>Idaho</b>				P: C. Anderson; O: M. Fisher(1/31-2/1)
<i>Island Park Area</i>				
Warm Springs (west side of Henrys Lake)	0	0	0	
Henrys Lake flats	9	10	19	
Big Springs, North Fork, Mack's Inn Area	43	16	59	
Mack's Inn to Island Park Reservoir	18	0	18	
Island Park Reservoir	4	2	6	Reservoir frozen; TRUS on pond on west shore
Island Park Reservoir inlet	2	0	2	
Trude Ranch Pond				
Icehouse Reservoir	0	0	0	Frozen
Sheridan Creek, mouth to Sheridan Reservoir	3	4	7	Frozen half way to IP Reservoir
Sheridan Reservoir	7	4	11	Very limited open water
Sheridan Creek cabin and pond	0	0	0	
<b>Subtotal</b>	<b>86</b>	<b>36</b>	<b>122</b>	
<i>Buffalo River Area</i>				
Buffalo River	13	2	15	
Tom's Creek	4	0	4	
Elk Creek/Trudes Siding pond	15	0	15	
<b>Subtotal</b>	<b>32</b>	<b>2</b>	<b>34</b>	
<i>Harriman State Park (HSP) Area</i>				
Island Park Dam through Box Canyon	3	3	6	
Box Canyon - HSP north boundary	193	53	246	
HSP north bounday - Osborne bridge	123	14	137	
Golden Lake	10	0	10	
Thurmon Creek	2	0	2	



Silver Lake	0	0	0	Frozen
Osborne Bridge - Pinehaven	72	4	76	
Pinehaven	38	4	42	
Fish Pond	0	0	0	Frozen
Henrys Fork below Pinehave - Forest boundary	14	0	14	
<b>Subtotal</b>	<b>455</b>	<b>78</b>	<b>533</b>	
<i>Henrys Fork, HSP to Warm River</i>				
Warm River	0	0	0	
<b>Subtotal</b>	<b>0</b>	<b>0</b>	<b>0</b>	
<i>Lower Henrys Fork Area</i>				
Warm River confluence to Ashton Dam	4	0	0	
Ashton Dam to Chester Dam	345	106	451	
Chester Dam to Highway 33	135	29	164	Mostly frozen above St. Anthony; flooding below
Highway 33 - Menan Buttes	45	4	49	River mostly frozen
Ashton Ponds	0	0	0	Frozen
Willow Creek Area farmstead ponds	0	0	0	Frozen
Mikesell Reservoir 1 & 2	0	0	0	Frozen
Arcadia Reservoir, Upper	0	0	0	Frozen
Arcadia Reservoir, Lower	0	0	0	Frozen
Sand Creek WMA and area	0	0	0	Frozen
Singleton Ponds	0	0	0	Frozen
Texas Slough	0	0	0	Mostly frozen
Bannock Jim Slough	0	0	0	Mostly frozen
Mud Lake WMA	0	0	0	Frozen
Camas NWR	0	0	0	Frozen
Camas Creek	0	0	0	Frozen
<b>Subtotal</b>	<b>529</b>	<b>139</b>	<b>668</b>	
<i>Teton River Basin</i>				
Teton River to Wilford Dam	3	1	4	
Wilford Dam to Newdale Bridge	4	1	5	Wilford Dam completely frozen
Newdale Bridge to Teton Dam site	29	18	47	
Teton River Canyon	27	6	33	High percent frozen
Teton Basin	54	19	73	Mostly frozen
North Fork Teton River	0	0	0	
South Fork Teton River	2	1	3	Mostly frozen
<b>Subtotal</b>	<b>119</b>	<b>46</b>	<b>165</b>	
<i>South Fork of the Snake River</i>				
Swan Valley (Palisades Reservoir to Conant Valley)	309	156	465	1 Tundra swan reported in Swan Valley
Canyon (Conant to Heise)	95	45	140	
Delta (Heise to Menan Buttes)	105	32	137	
Dry bed (Heise to Menan)	0	0	0	Dry
<b>Subtotal</b>	<b>509</b>	<b>233</b>	<b>742</b>	



<i>Main Stem of the Snake River</i>				
Menan Buttes to Idaho Falls	100	20	120	River mostly frozen from Idaho Falls to Osgood
Dry Bed	0	0	0	
Idaho Falls to Fort Hall (Ferry Butte)	26	0	26	Idaho Falls & Blackfoot airports
Blackfoot Marsh	0	0	0	Frozen
<b>Subtotal</b>	<b>126</b>	<b>20</b>	<b>146</b>	
<i>Fort Hall Bottoms to American Falls Reservoir</i>				
American Falls Reservoir shoreline	137	23	160	Very little open water - eastern end only
Kinney Creek	0	0	0	
Portneuf River (Am. Falls Res. to Hwy 86)	39	10	49	
Mouth of Portneuf River	0	0	0	
Spring Creek to American Falls Reservoir	60	15	75	
Snake River - Tilden Bridge	24	18	42	
Clear Creek and Ross Fork	29	6	35	
Diggie Creek	0	0	0	
Flying Y oxbows	18	7	25	
<b>Subtotal</b>	<b>307</b>	<b>79</b>	<b>386</b>	
<i>Snake River below American Falls Dam</i>				
Springfield Reservoir	1	1	2	
American Falls Reservoir (except Fort Hall)	0	0	0	
American Falls Dam - Minidoka NWR	7	1	8	
Minidoka Dam - C.J. Strike Reservoir				Not flown
Hagerman National Fish Hatchery	2	1	3	Ground count 1/29; downstream Owsley Bridge
Bruneau Dunes State Park	0	0	0	
Bruneau Dunes - C.J. Stike Reservoir	0	0	0	
Faulkner Pond	0	0	0	
White Arrow Pond (Bliss)	0	0	0	
Pioneer Reservoir (King Hill)	0	0	0	
Silver Creek (Picabo area)	0	0	122	Ground count 1/25; 8 tundra swans not included
<b>Subtotal</b>	<b>10</b>	<b>3</b>	<b>135</b>	
<i>Grays Lake NWR Area</i>				
Big Springs	0	0	0	
Shorty's Homestead	0	0	0	
Blackfoot Reservoir	2	0	2	
Chub Springs, southwest of refuge	1	0	1	
Chesterfield	0	0	0	
<b>Subtotal</b>	<b>3</b>	<b>0</b>	<b>3</b>	
<i>Soda Springs Area</i>				
Woodall Springs	20	7	27	
Alexander Reservoir and Siding	0	0	0	
Miller Ponds	0	0	0	
Government Dam	0	0	0	
Soda Creek	5	0	5	Very little vegetation



Soda Canal	6	1	7	
<b>Subtotal</b>	<b>31</b>	<b>8</b>	<b>39</b>	
<i><b>Bear River Reaches</b></i>				
Alexander Reservoir	12	5	17	
Alexander Reservoir - Gentile Valley Bridge	47	5	52	
Gentile Valley Bridge - old cheese factory	0	0	0	2/3 ground survey; 3 tundra swans below Niter
Gentile Valley Bridge to Oneida Dam	16	2	18	
Montpelier Reservoir (rearing pond)	5	0	5	Main reservoir frozen
Oneida Narrows	0	0	0	
Oneida Narrows to Riverdale Bridge	0	0	0	Dam frozen; river open below dam
Riverdale Bridge to Utah border	7	8	15	
<b>Subtotal</b>	<b>87</b>	<b>20</b>	<b>107</b>	
<i><b>Bear Lake National Wildlife Refuge</b></i>				
West Canal Unit	0	0	0	
Rainbow Unit	0	0	0	
Outlet Canal	0	0	0	
<b>Subtotal</b>	<b>0</b>	<b>0</b>	<b>0</b>	
<b>Nevada</b>				
Ruby Lake NWR	18	10	28	J. Mackay (2/1)
Franklin Lake				Frozen
<b>Oregon</b>				
<i><b>Malheur NWR</b></i>				
Refuge total	4	0	4	R. Roy (1/22)
<i><b>Summer Lake Wildlife Management Area</b></i>				
Summer Lake WMA	34	16	50	M. St. Louis (1/26)

<sup>a</sup>Blank denotes area not surveyed.



Appendix C. Personnel who conducted the 2007 Mid-winter Trumpeter Swan Survey.

---

Montana (Red Rock Lakes NWR, Centennial Valley, Madison Valley)

J. Warren (Red Rock Lakes NWR)

Montana (Hebgen Lake Area and Paradise Valley)

Observer: T. McEneaney (Yellowstone National Park)

Pilot: R. Stradley (Yellowstone National Park)

Idaho

Observer: M. Fisher (Southeast Idaho Refuge Complex)

Pilot: C. Anderson, A. Issac (AvCenter)

Wyoming

Observer: S. Patla (Wyoming Game and Fish Department)

Pilot: D. Stinson (Sky Aviation)

Wyoming (Yellowstone National Park)

Observer: T. McEneaney (Yellowstone National Park)

Pilot: R. Stradley (Yellowstone National Park)

Ruby Lake NWR and vicinity

J. Mackay (Ruby Lake NWR)

Malheur NWR

R. Roy (Malheur NWR)

Summer Lake WMA

M. St. Louis, (Oregon Department of Fish and Wildlife)

---