

University of Nebraska - Lincoln

DigitalCommons@University of Nebraska - Lincoln

Agronomy & Horticulture -- Faculty Publications

Agronomy and Horticulture Department

11-15-2015

Residue Harvest Effects on Irrigated, No-Till Corn Yield and Nitrogen Response

Charles S. Wortmann

University of Nebraska-Lincoln, cwortmann2@unl.edu

Charles A. Shapiro

University of Nebraska-Lincoln, cshapiro1@unl.edu

Marty R. Schmer

University of Nebraska-Lincoln, marty.schmer@ars.usda.gov

Follow this and additional works at: <https://digitalcommons.unl.edu/agronomyfacpub>



Part of the [Agricultural Science Commons](#), [Agriculture Commons](#), [Agronomy and Crop Sciences Commons](#), [Botany Commons](#), [Horticulture Commons](#), [Other Plant Sciences Commons](#), and the [Plant Biology Commons](#)

Wortmann, Charles S.; Shapiro, Charles A.; and Schmer, Marty R., "Residue Harvest Effects on Irrigated, No-Till Corn Yield and Nitrogen Response" (2015). *Agronomy & Horticulture -- Faculty Publications*. 847. <https://digitalcommons.unl.edu/agronomyfacpub/847>

This Article is brought to you for free and open access by the Agronomy and Horticulture Department at DigitalCommons@University of Nebraska - Lincoln. It has been accepted for inclusion in Agronomy & Horticulture -- Faculty Publications by an authorized administrator of DigitalCommons@University of Nebraska - Lincoln.

Residue Harvest Effects on Irrigated, No-Till Corn Yield and Nitrogen Response

Charles S. Wortmann,* Charles A. Shapiro, and Marty R. Schmer

ABSTRACT

Crop residue harvest occurs on about 40% of Nebraska's 3,700,000 ha of corn (*Zea mays* L.) land, primarily for feeding of beef cattle. Immobilization of applied N is expected to be less with residue harvest due to reduced microbial activity for digestion of high C/N ratio organic material. Residue reduction may affect subsequent crop yield and response to applied N. Field research was conducted at three locations over 2 yr in eastern Nebraska for irrigated, no-till corn following corn to determine residue harvest effects on yield and the economically optimal nitrogen rate (EONR). Study sites had deep silt loam or silty clay loam soil with good water infiltration and plant-available water holding capacity. Mean aboveground biomass N content, applied N recovery efficiency, and grain yield were 22, 43, and 20% higher with >75% residue removal compared with no residue removal. Agronomic efficiency of applied N use was not consistently affected. The residue removal effects were often greater in the third compared with second year of continuous corn. The residue removal effect on EONR was not consistent over site-years, and the mean reduction in EONR with residue removal was between 10 and 20 kg ha⁻¹. While removal of some corn residue is expected to result in higher yield of the following corn crop, reduction in applied N need cannot be well predicted before planting.

CORN CROP residue harvest by chopping silage, baling stover, or grazing occurs on about 40% of Nebraska's 3,700,000 ha of corn land, primarily for feeding of beef (Klopfenstein et al., 2013) and may increase to meet future feedstock demands for ethanol production (Cantrell et al., 2014; Alternative Fuels Data Center, 2014; DuPont Cellulosic Ethanol, 2012; Biomass Research and Development Board, 2009). Corn residue harvest results in N removal of approximately 8.5 kg Mg⁻¹ (Wortmann et al., 2012). Immobilization of applied N is expected when much high CN crop residue remains in the field as is typical following corn grain harvest (Myrold and Bottomley, 2008). The CN of corn residue is typically between 60 and 70. Reduced immobilization may more than compensate for N removed in residue harvest. When corn follows soybean in rotation, applied N requirement is typically 40 to 50 kg ha⁻¹ less compared to corn following corn and this is attributed at least partly to less N immobilization following soybean (Shapiro et al., 2009; Dobermann et al., 2011). While soybean fixes much atmospheric N, N removal in soybean grain harvest commonly exceeds fixed N and a net N contribution to the following crop is not expected (Salvagiotti et al., 2008). However, the quantity of soybean crop residue is much less compared with corn and the soybean leaf senescence and decomposition occurs earlier enough so that significant residue N release occurs before planting the following corn crop. Therefore, the potential for applied N immobilization is less with soybean compared with corn residue. The lower applied N required for corn when the previous crop is soybean compared with corn is attributed to this reduced potential for N immobilization by microbes involved in decomposition of crop residues.

Immobilization of N is expected to be less if corn crop residues are less. Therefore, applied N requirement for a following corn crop may be less if crop residues are reduced through harvest. Residue removal decreased the EONR by >12 and > 19 kg ha⁻¹ for no-till and strip till, respectively, in southern Minnesota (Sindelar et al., 2013). Schoessow et al. (2010) found that maximization of corn yield required

C.S. Wortmann and C.A. Shapiro, Dep. of Agronomy and Horticulture, Univ. of Nebraska-Lincoln, Lincoln, NE 68583-0915; and M.R. Schmer, Grain, Forage, and Bioenergy Research Unit, USDA-ARS, Univ. of Nebraska-Lincoln, Lincoln, NE 68583-0937.
*Corresponding author (cwortmann2@unl.edu).

Abbreviations: ARDC, Agriculture Research and Development Center; EONR, economically optimal nitrogen rate; HAL, Haskell Agricultural Laboratory; NAE, agronomic efficiency of applied nitrogen; NDVI, normalized difference vegetative index; NHI, nitrogen harvest index; NP, north pivot; NUp, nitrogen content of the aboveground biomass; NRE, recovery efficiency for applied nitrogen; NDRE, normalized difference red edge; SP, south pivot.

Published in Agron. J. 108:384–390 (2016)

doi:10.2134/agronj2015.0361

Received 29 July 2015

Accepted 26 Oct. 2015

Copyright © 2016 by the American Society of Agronomy
5585 Guilford Road, Madison, WI 53711 USA
All rights reserved

41 to 134 kg ha⁻¹ less N with removal compared with no soybean residue removal for 3 site-years but there was no residue removal effect for 9 of the 12 site-years.

Crop residue harvest often affects the yield of the following crop but the direction of the effect depends on production conditions. Residue removal may worsen soil water deficits due to higher soil temperature and increased runoff. When soil water deficits are likely to occur, residue removal may therefore contribute to yield loss for the following crop (Linden et al., 2000; Wilhelm et al., 2004). Residue removal effects on soil temperature, and thereby on rate of crop development, have been well documented (Sindelar et al., 2013; Halvorson and Stewart, 2015). The interactions between tillage practice, N requirement, and residue removal can be important (Sims et al., 1998). Continuous corn yield was similar for no-till and tilled with all crop residue removed but less with no-till where no residue was removed (Coulter and Nafziger, 2008). In another study, however, crop residue removal resulted in corn yield increases of 6.5 and 9% for tillage and no-till, respectively (Sindelar et al., 2013). Averaged over 10 cropping seasons, irrigated corn grain yields were 7.5 to 8.6% higher for no-till when corn residue was removed compared with no residue removal, while grain yields were similar under tillage in all residue removal treatments (Schmer et al., 2014).

In an analysis of 239 site-years across 36 research sites that were primarily in the U.S. Corn Belt, Karlen et al. (2014) found mean corn yields of 9.8, 10.1, and 10.1 Mg ha⁻¹ with no, moderate, and high rates of residue removal. This amounted

to a 3% average yield increase with corn residue removal compared with no corn residue removal. Longitude, latitude, yield level, and previous crop of corn compared with soybean did not account for much variation in the residue removal effects on corn yield. Yield was on average 20% more with no residue removal for tilled compared with no-till management, but there was not a tillage effect on grain yield with moderate and high residue removal.

Therefore, when soil water deficits are not limiting to crop productivity, crop residue removal may result in increased yield and less immobilization of applied N, while residue removal results in increased N removal. Research was conducted to determine the combined effect of these factors on crop yield and EONR for the following corn crop. The hypothesis was that the EONR for corn following corn when residue is removed, is less even though yield may be increased compared to no residue removal under irrigated, no-till conditions.

MATERIALS AND METHODS

Field research was conducted in 2013 and 2014, with continuous corn from 2012, at two locations of the Agricultural Research and Development Center (ARDC) and one of the Haskell Agricultural Laboratory (HAL) of the University of Nebraska-Lincoln. The sites were: ARDC south pivot (SP) at 41.182 N, 96.482 W, 360 m altitude with Yutan silty clay loam of 2 to 6% slope (mixed, superactive, mesic Mollic Hapludalf); ARDC north pivot (NP) at 41.150 N, 96.449 W, 355 m altitude with Tomek and Filbert silt loam soil of 0 to 2% slope

Table 1. Analysis of variation for crop residue removal and N rate effects on the second and third year of continuous irrigated no-till corn at three locations in eastern Nebraska.

Source of variation	df	NDVI†	NDRE	Grain yield	N uptake	NHI	RE	AE
ARDC south pivot								
Residue	1	***	***	**	ns‡	ns	ns	ns
Yr × Residue	1	ns	ns	ns				ns
N	5	***	***	***	**	ns	ns	ns
Residue × N	5	ns	ns	ns	ns	ns	ns	ns
Yr × N	5	***	ns	**				ns
Yr × Residue × N	5	**	*	ns				ns
ARDC north pivot								
Residue	1	***	***	**	**	ns	ns	ns
Yr × Residue	1	ns	ns	ns	ns	ns	ns	ns
N	5	***	***	***	***	ns	*	ns
Residue × N	5	ns	ns	ns	ns	ns	ns	ns
Y × N	5	***	ns	**	ns	**	ns	ns
Y × Residue × N	5	**	*	ns	ns	ns	ns	ns
Haskell Agricultural Laboratory								
Residue	1	ns	ns	***	***	ns	ns	ns
Yr × Residue	1	**	***	**	***	ns	ns	ns
N	5	***	***	**	***	ns	ns	ns
Residue × N	5	**	*	ns	ns	ns	ns	ns
Yr × N	5	ns	ns	ns	ns	ns	ns	ns
Yr × Residue × N	5	ns	*	ns	ns	ns	ns	ns

* $P < 0.05$.

** $P < 0.01$.

*** $P < 0.001$.

† NDVI, normalized difference vegetative index; NDRE, normalized difference red edge; NHI, nitrogen harvest index; RE, nitrogen recovery efficiency; and AE, nitrogen agronomic efficiency. Sources of variation involving N rate had 4 rather than 5 df for RE and AE.

‡ ns, not significant.

(fine, smectitic, mesic Pachic Argiudoll and fine, smectitic, mesic Vertic Argialboll, respectively); and HAL under lateral move sprinkler irrigation at 42.389 N, 96.958 W, 445 m altitude with Moody silt loam of 6 to 11% slope (fine-silty, mixed mesic Udic Haplustoll). Soil organic matter by loss on ignition and pH 1:1 water were respectively: 31.5 mg kg⁻¹ and 5.9 for SP; 37.0 mg kg⁻¹ and 6.4 for NP; and 30.7 mg kg⁻¹ and 7.3 for HAL. The ARDC and HAL sites were irrigated with center pivot and a lateral move sprinkler systems, respectively. All sites were no-till managed. The previous crop was corn.

The experimental plots were maintained over the 2 yr. The trials had a split plot design with four replications. The main plot treatments were 0 and >75% residue removal in the fall for the ARDC fields and in the spring for HAL trials. The residue removal treatments were applied to the residue of the previous (2012) crop and after harvest of the first (2013) experimental crop. The subplot treatments were six N rates of 0 to 250 kg ha⁻¹ at ARDC and 0 to 200 kg ha⁻¹ at HAL. Fertilizer N was broadcast applied as ammonium nitrate 34–0–0 without incorporation in the spring before planting. Fertilizer was applied with a tractor mounted drop applicator or with man held applicators for application of weighed amounts. Subplot size was 6 by 12 m.

The corn hybrid was Pioneer 1151AM at ARDC. The HAL hybrids were Channel Bio 209-85VT3 PRIB in 2013 and Renze 5X288HXT/LL in 2014. These had triple stack root worm, corn borer and glyphosate resistance. The seeding rate was 80,000 to 84,000 seed ha⁻¹ at ARDC and 79,000 seed ha⁻¹ at HAL in 75 cm rows. Planting dates were: 13 May 2013 for SP and NP; 22 Apr. 2014 for SP; 24 Apr. 2014 for NP; and 2 June 2013 and 22 May 2014 for HAL. No fertilizer other than N was applied consistent with (Shapiro et al., 2009) except for ARDC SP, where 20 kg ha⁻¹ P was broadcast applied each year as triple super phosphate.

Observations included canopy reflection at V9–10 for normalized difference red edge (NDRE; $NDRE = (780\text{ nm} - 730\text{ nm}) / (780\text{ nm} + 730\text{ nm})$) and normalized difference vegetative index (NDVI; $NDVI = (780\text{ nm} - 670\text{ nm}) / (780\text{ nm} + 670\text{ nm})$) with a hand carried Rapid Scan (Holland Scientific, Lincoln, NE). After physiological maturity, six plants were sampled, and residue (aboveground biomass excluding the ears) and grain dry weights were determined. Residue and grain samples were analyzed for N content, either by using a Flash 2000 Organic Elemental Analyzer CN analyzer or by LECO combustion (Gavlak et al., 2005). The harvest area for yield

Table 2. Crop residue removal and N rate effects on normalized difference vegetative index (NDVI) and normalized difference red edge (NDRE) at V9–10 for 6 site-years in eastern Nebraska.

Residue	ARDC South Pivot				ARDC North Pivot					
	NDVI		NDRE		NDVI		NDRE			
	2013	2014	2013	2014	2013	2014	2013	2014		
NoR†	0.82	0.80	0.33	0.33	0.75	0.77	0.29	0.30		
R	0.83	0.86	0.34	0.38	0.83	0.86	0.32	0.36		
LSD	ns	0.024	ns	0.042	0.012	0.038	0.019	0.045		
N rate	\bar{X}_{\dagger}	\bar{X}	\bar{X}	\bar{X}	NoR	R	\bar{X}	NoR	R	\bar{X}
0	0.77	0.78	0.27	0.31	0.62	0.78	0.80	0.21	0.25	0.28
50	0.79	0.83	0.30	0.35	0.73	0.82	0.82	0.26	0.32	0.31
100	0.83	0.84	0.34	0.38	0.78	0.83	0.82	0.30	0.34	0.33
150	0.85	0.84	0.36	0.37	0.76	0.84	0.83	0.29	0.34	0.34
200	0.83	0.84	0.36	0.37	0.80	0.85	0.83	0.33	0.34	0.36
250	0.85	0.85	0.39	0.37	0.84	0.84	0.81	0.35	0.35	0.36
Linear R^2_{\dagger}	0.77	ns	0.94	ns	0.83	0.73	ns	0.92	ns	0.93
Quad. R^2	ns	ns	ns	0.90	ns	0.97	0.87	ns	ns	0.99
Haskell Agricultural Laboratory										
	NDVI				NDRE					
	2013	2014	2013	2014	2013	2014				
NoR†	0.71	0.73	0.33		0.28					
R	0.75	0.81	0.32		0.36					
LSD	0.023	0.037	ns		0.033					
N rate	\bar{X}	NoR	R	\bar{X}	NoR	R				
0	0.69	0.65	0.80	0.27	0.22	0.33				
50	0.71	0.70	0.80	0.30	0.24	0.34				
100	0.73	0.74	0.81	0.33	0.27	0.37				
150	0.73	0.77	0.82	0.34	0.31	0.38				
200	0.74	0.77	0.81	0.34	0.32	0.35				
250	0.76	0.78	0.82	0.37	0.33	0.38				
Linear R^2_{\dagger}	0.94	0.87	0.70	0.92	0.96	ns				
Quadratic R^2	ns	0.98	ns	ns	ns	ns				

† NoR and R: no removal and >75% removal of corn residue. \bar{X} indicates the mean of NoR and R in cases of no residue removal × N rate interaction. LSD is least significant difference at 0.05.

‡ R^2 values are for regression on treatment means.

Table 3. Crop residue removal and N rate effects on aboveground biomass N content (NUp, kg ha⁻¹), nitrogen harvest index (NHI, kg kg⁻¹), and applied N efficiency of recovery (RE, kg kg⁻¹) and agronomic use (AE, kg kg⁻¹) for 6 site-years in eastern Nebraska. The residue removal by N rate interactions were not significant.

Residue	ARDC North Pivot								ARDC South Pivot			
	2013				2014				2014			
	NUp	NHI	RE	AE	NUp	NHI	RE	AE	NUp	NHI	RE	AE
NoR†	228	0.68	0.27	13.7	170	0.56	0.32	14.0	158	0.60	0.30	14.0
R	264	0.66	0.47	4.8	220	0.53	0.37	29.3	199	0.58	0.48	25.1
LSD 0.05	21.1	ns	ns	ns	49.9	ns	ns	ns	20.6	ns	ns	ns
N, kg ha ⁻¹												
0	204	0.71			154	0.50			138	0.55		
50	231	0.68	0.53	16.1	178	0.50	0.47	17.2	164	0.54	0.52	17.2
100	248	0.67	0.43	7.8	181	0.54	0.26	24.2	175	0.57	0.37	13.6
150	255	0.70	0.33	8.7	212	0.54	0.37	23.9	195	0.59	0.25	23.9
200	253	0.66	0.24	7.6	215	0.59	0.30	21.4	192	0.66	0.27	21.4
250	284	0.60	0.32	6.2	231	0.60	0.31	21.5	208	0.65	0.54	21.5
LSD	40.2	0.069	ns	ns	40.4	ns	ns	ns	28.7	0.079	ns	ns
Haskell Agricultural Laboratory												
	2013				2014							
	NUp	NHI	RE	AE	NUp	NHI	RE	AE				
NoR†	153	0.66	0.20	11.2	89	0.69	0.16	11.5				
R	158	0.70	0.09	10.9	149	0.68	0.44	14.3				
LSD	ns	ns	ns	ns	16.1	ns	ns	ns				
N, kg ha ⁻¹												
0	139	0.68			89	0.69						
40	140	0.70	0.03	14.6	100	0.70	0.27	11.9				
80	152	0.68	0.16	11.0	115	0.68	0.32	12.3				
120	165	0.70	0.22	16.3	133	0.68	0.37	16.4				
160	165	0.65	0.16	5.7	143	0.70	0.34	15.8				
200	170	0.67	0.16	7.9	133	0.66	0.22	8.2				
LSD	13.0	ns	ns	ns	35.0	ns	ns	ns				
Linear R ² ‡	0.90	ns	ns	ns	0.82	ns	ns	ns				
Quadratic R ²	ns	ns	ns	ns	ns	ns	ns	ns				

† NoR and R: no removal and >75% removal of corn residue. LSD is least significant difference at 0.05.

‡ R² values are for regression on treatment means.

Table 4. Crop residue removal and N rate effects on residual soil nitrate N (mg kg⁻¹) levels following harvest for the 0- to 30-cm and 30- to 120-cm depths at two locations in eastern Nebraska. The residue removal by N rate interactions were not significant.

Residue	ARDC South Pivot				ARDC North Pivot			
	2013		2014		2013		2014	
	0–30	30–120	0–30	30–120	0–30	30–120	0–30	30–120
NoR†	3.28	1.55	2.89	2.04	6.06	4.25	3.51	1.80
Removed	4.04	1.79	3.24	2.55	6.28	4.66	2.66	1.67
LSD	0.703	ns‡	ns	ns	ns	ns	0.812	ns
N rate, kg ha ⁻¹								
0	2.89	1.08	2.46	1.74	3.68	2.01	2.46	1.74
50	3.50	1.16	2.62	1.48	4.78	2.60	2.62	1.48
100	3.93	0.81	3.20	2.09	4.93	2.34	3.20	2.09
150	3.00	1.53	3.32	2.73	5.69	4.62	3.32	2.73
200	4.26	1.82	3.21	2.33	9.68	8.00	3.21	2.33
250	4.38	3.61	3.59	3.38	8.28	7.15	3.59	3.38
Linear R ² §	ns	0.57	ns	ns	0.72	0.78	ns	ns
Quadratic R ²	ns	0.90	ns	ns	ns	ns	ns	ns

† NoR and Removed: no removal and >75% removal of corn residue. LSD is least significant difference at 0.05.

‡ ns, not significant.

§ R² values are for regression on treatment means.

determination was 1.5 by 6 m and harvested either by hand harvest of ears and subsequent shelling or with a plot combine. Nitrogen uptake (NUp) or the N content of the aboveground biomass, N harvest index, nitrogen recovery efficiency (NRE), and nitrogen agronomic efficiency (NAE) were calculated with: $NRE = (\text{the difference of NUp with and without N applied}) / \text{N rate (kg kg}^{-1}\text{)}$; and $NAE = (\text{the difference of grain yield with and without N applied}) / \text{N rate (kg kg}^{-1}\text{)}$. These N traits were not determined for SP in 2013 due to loss of grain samples. Soil was sampled with two cores per sample in 30-cm increments to 120-cm depth to determine residual soil $\text{NO}_3^- - \text{N}$ for the ARDC site-seasons.

Data analyses was done with Statistix 10.0 (Analytical Software, Tallahassee, FL). Analysis of variance was by site-year for all variables except for grain yield which was by sites combined over years. Years were considered fixed effects as the first and second year of corn following corn with residue removal treatments. Treatment effects were considered significant at $\alpha = 0.05$. Linear and nonlinear regression analyses on plot values related grain yield to N rate. The EONRs were determined for ratios of N use costs relative to grain value $[(\text{US\$ kg}^{-1}) (\text{\$ kg}^{-1})^{-1}]$ of 5, 8, 11, and 14.

RESULTS

The residue removal \times N rate \times year interaction was significant for NDRE and NDVI at V9–10 for all locations except for NDVI at HAL (Table 1). The interactions were due to a greater response to applied N with no residue removal compared with removal and with generally greater response in 2014 compared with 2013 (Table 2). The residue removal \times year interaction was significant at HAL due to greater residue removal effects in 2014 compared with 2013. Values for NDRE and NDVI were higher with N applied compared with no N applied except for NDRE with residue removal at NP in 2013 and HAL in 2014, and for NDVI at SP in 2014.

Mean NUp was 181 kg ha^{-1} and mean NHI was 0.63. The residue removal \times N rate interaction did not affect NUp and NHI (Tables 1 and 3). Mean NUp was 22% greater with residue removal compared with no removal and greater for all site-years except HAL in 2013. The residue removal \times year interaction affected NUp at HAL because of a greater residue removal effect in 2014 compared with 2013. Uptake of N was increased with N application. Residue removal did not affect NHI, and NHI was inconsistently affected by N rate at SP and NP in 2013. Mean NRE and NAE were 0.31 and 14.9 kg kg^{-1} , respectively (Table 3). Treatment effects on NRE and NAE were not significant except for a decline in NRE with increasing N rate for NP. However, mean NRE was 43% greater with residue removal compared with no removal and in all cases except for HAL in 2013 where NRE was very low due to relatively low crop response to applied N. There was no such trend for residue removal effects on NAE. The effect of crop residue removal on residual soil $\text{NO}_3^- - \text{N}$ following harvest was inconsistent at the 0- to 30-cm depth with no effect at the 30- to 120-cm depth (Table 4).

Grain yield averaged 10 Mg ha^{-1} (Fig. 1). Yield was not affected by the residue removal \times N rate \times year interaction (Table 1). Mean grain yield was greater at all locations with residue removal compared with no removal and the residual

removal effect was greater at HAL in 2014 compared with 2013. The residue removal effect on grain yield for SP was significant in the combined ANOVA but not with the individual site-year ANOVAs. The effect of $100 \text{ kg ha}^{-1} \text{ N}$ on yield was greater with residue removal compared to no removal in 2014 at SP and NP accounting for the significant $\text{N} \times \text{year}$ interactions. The average yield increase due to residue removal was 20%, with site-year mean increases of 2.7 to 71%. Mean grain yield increase due to N application was 3.42 Mg ha^{-1} and site-year yield increases ranged from 11 to 72%. Responses included linear and curvilinear responses although the yield peak was often not reached.

The EONR could not be estimated for some situations because of linear effects of N rate on grain yield or failure to reach peak yield at the upper N rate in several cases (Table 5). With past research for high yield irrigated corn in Nebraska, mean EONR ranged from 141 to 180 kg ha^{-1} for corn after corn with cost/price ratios ranging from 13 to 5 kg kg^{-1} (Dobermann et al., 2011). With EONR set at an upper limit 200 kg ha^{-1} in cases where EONR could not be estimated or was greater than this limit, then EONR is 8 to 24 kg ha^{-1} with a mean of 18 kg ha^{-1} less with residue removal compared with no removal.

DISCUSSION

The results indicate that immobilization of applied N was reduced by corn residue removal. More N mineralization associated with higher soil temperature may have contributed to greater NUp with residue removal. The NDRE and NDVI measures at V9–10 with residue removal indicate increased early NUp as these measures are sensitive to leaf color, and therefore leaf N concentration, and leaf area index. More NUp and greater NRE indicate improved N availability throughout the season with residue removal compared with no removal.

The 20% yield increases due to crop residue removal were greater than the average of 3% increase determined from Karlen et al. (2014). Much of this yield increase was due to 2014 results at two sites indicating greater residue removal effect on yield for the third compared with the second year of continuous corn (Fig. 1). The greater effects on yield in this study may be attributed to lack of soil water deficits with irrigation while in many non-irrigated studies, deficits with residue removal compared to no removal may have caused more yield reduction (Linden et al., 2000; Wilhelm et al., 2004; Varvel et al., 2008).

Grain yield response to N rate often did not reach a peak. The mean maximum grain yield response to N rate was a 49% increase. In comparison, the mean increase was 66% in another study of 11 corn after corn site-years for high yield corn (Dobermann et al., 2011). Some of this difference was due to higher maximum N rates in the latter study. While NRE was higher with residue removal compared with no removal, the average was only 0.31 averaged across all N rate application rates. In contrast, the average NRE at EONR for corn after corn in the above cited study of 11 site-years was 0.67 (Wortmann et al., 2011). Therefore, the results indicate relatively poor N recovery and yield response in the current study. These two studies differed for two management practices including split application of N and tillage for most corn after corn site-years in the Dobermann et al. (2011) study, while all N was applied pre-plant and all site-years were no-till in the

Table 5. Crop residual removal effects on economically optimal nitrogen rates (EONR) (kg N ha^{-1}) at four N use costs to grain value ratios [(US\$ kg^{-1} N) ($\text{\$ kg}^{-1}$ corn grain) $^{-1}$].

Site-year	Fertilizer N use cost to corn grain value ratio			
	5	8	11	14
SPI3 R	—	—	—	—
SPI3 NoR	—	—	177	102
NP13 R	123	73	23	0
NP13 NoR	177	127	77	27
HAL13 R	165	115	65	15
HAL13 NoR	95	65	35	5
SPI4 R	194	178	161	145
SPI4 NoR	—	—	—	—
NP14 R	227	212	197	182
NP14 NoR	—	—	—	—
HAL14 R	139	117	96	74
HAL14 NoR	—	—	—	218
	Mean EONR for EONR < 200 kg N ha^{-1}			
NoR†	179	165	148	122
R	170	147	124	103
Difference	9	18	25	20

† NoR and R: no removal and >75% removal of corn residue, respectively.

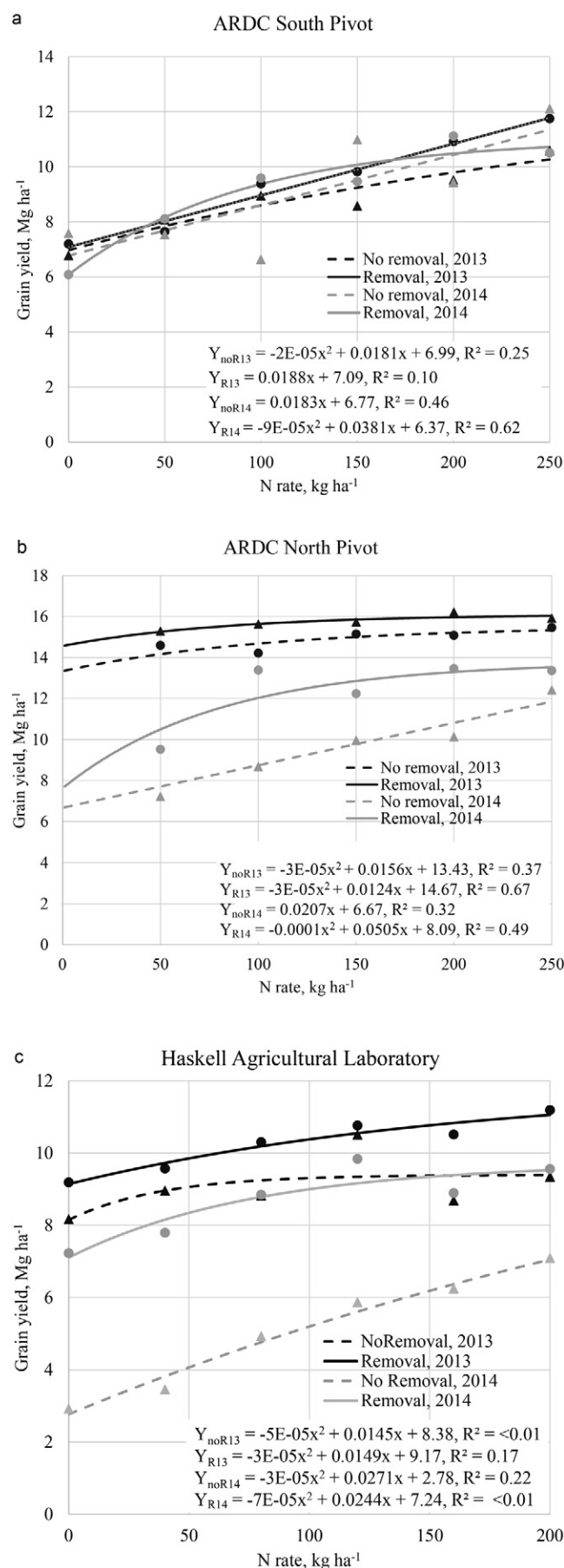
current study. Residual soil nitrate following harvest to 1.2-m depth was low and not affected much by N application rates except for NP in 2013. The low NRE coupled with generally low residual soil nitrate indicate considerable N loss.

An implication of a lack of plateau or peak in grain yield response to N rate was failure to determine EONR for several site-years. However, EONR could be determined twice as often with residue removal compared to no removal (Table 4) suggesting lower EONR with removal. The effect was not consistent or great, however, as the mean difference with EONR capped at 200 kg ha^{-1} was only 18 kg ha^{-1} N. This is very similar to 13 kg ha^{-1} reduction in EONR with residue removal determined by Sindelar et al. (2013). Higher corn yield with lower N rates associated with residue removal may not be sustainable in the long term due to total soil N decline (Halvorson and Stewart, 2015).

CONCLUSION

Significant grain yield increase can be expected for irrigated no-till corn following corn if some crop residue is removed. While fertilizer N recovery and crop N uptake are likely to be greater with residue removal, there is little justification to adjust pre-plant N rate due to low predictability of the residue removal effect on applied N need. With lower levels of removal, the effect on EONR is likely to be even less than in this study. To capitalize on the potential to reduce applied N in cases of residue removal, canopy sensor guided in-season N application may be needed as N is then applied according to canopy reflectance. This research did not address the long-term effect of

Fig. 1. Corn grain yield response to applied N, with and without residue removal, for three locations in eastern Nebraska including ARDC South Pivot, ARDC North Pivot, and Haskell Agricultural Laboratory. Residue removal by N rate interaction effects were not significant. Regression was on N rate means but R^2 values are for adjusted R^2 with regression analysis on plot values.



many years of continuous residue removal but levels of residue removal are likely to be less than in this study if done continuously to maintain soil organic matter levels.

ACKNOWLEDGMENTS

We acknowledge the contributions of technologist Michael Mainz and farm managers Greg Teichmeier and Keith Stewart to this research.

REFERENCES

- Alternative Fuels Data Center. 2014. Ethanol feedstocks. U.S. Department of Energy: Energy Efficiency and Renewable Energy. http://www.afdc.energy.gov/fuels/ethanol_feedstocks.html (accessed 21 May 2015).
- Biomass Research and Development Board. 2009. Increasing feedstock production for biofuels: Economic drivers, environmental implications, and the role of research. Biomass Research and Development Board. http://www.esd.ornl.gov/eess/8_Increasing_Biofuels_Feedstock_Production.pdf (accessed 21 May 2015).
- Cantrell, K.B., J.M. Novak, J.R. Frederick, D.L. Karlen, and D.W. Watts. 2014. Influence of corn residue harvest management on grain, stover, and energy yields. *BioEnergy Res.* 7:590–597. doi:10.1007/s12155-014-9433-9
- Coulter, J.A., and E.D. Nafziger. 2008. Continuous corn response to residue management and nitrogen fertilization. *Agron. J.* 100:1774–1780. doi:10.2134/agronj2008.0170
- Dobermann, A., C.S. Wortmann, R.B. Ferguson, G.W. Hergert, C.A. Shapiro, D.D. Tarkalson, and D. Walters. 2011. Nitrogen response and economics for irrigated corn in Nebraska. *Agron. J.* 103:67–75. doi:10.2134/agronj2010.0179
- DuPont Cellulosic Ethanol. 2012. DuPont corn stover harvest program. <http://biofuels.dupont.com/cellulosic-ethanol/nevada-site-ce-facility/corn-stover-harvest-program/> (accessed 21 May 2015).
- Gavlak, R.G., D.A. Horneck, and R.O. Miller. 2005. Total nitrogen in botanical materials- automated combustion method. In: Soil, plant and water reference methods for the western region. 3rd ed. North Am. Proficiency Testing Program. <http://www.naptprogram.org/files/napt/western-states-method-manual-2005.pdf> (accessed 7 Nov. 2015). p. 153–154.
- Halvorson, A.D., and C.E. Stewart. 2015. Stover removal affects no-till irrigated corn yields, soil carbon, and nitrogen. *Agron. J.* 107:1504–1512. doi:10.2134/agronj15.0074
- Karlen, D.L., S.J. Birrell, J.M.F. Johnson, S.L. Osborne, T.E. Schumacher, G.E. Varvel et al. 2014. Multilocation corn stover harvest effects on crop yields and nutrient removal. *BioEnergy Res.* 7:528–539. doi:10.1007/s12155-014-9419-7
- Klopfenstein, T.J., G.E. Erickson, and L.L. Berger. 2013. Maize is a critically important source of food, feed, energy and forage in the USA. *Field Crops Res.* 153:5–11. doi:10.1016/j.fcr.2012.11.006
- Linden, D.R., C.E. Clapp, and R.H. Dowdy. 2000. Long-term corn grain and stover yields as a function of tillage and residue removal in east central Minnesota. *Soil Tillage Res.* 56:167–174. doi:10.1016/S0167-1987(00)00139-2
- Myrold, D.D., and P.J. Bottomley. 2008. Nitrogen mineralization and immobilization. In: J.S. Schepers and W.R. Raun, editors, *Nitrogen in agricultural systems*. Agron. Monogr. 49. ASA, CSSA, and SSSA, Madison, WI. p. 157–172.
- Salviaggiotti, F., A. Weiss, A. Dobermann, D.T. Walters, K.G. Cassman, and J.E. Specht. 2008. Nitrogen uptake, fixation and response to fertilizer N in soybeans: A review. *Field Crops Res.* 108:1–13. doi:10.1016/j.fcr.2008.03.001
- Schmer, M.R., G.E. Varvel, R.F. Follett, V.L. Jin, and B.J. Wienhold. 2014. Tillage and residue management effects on soil carbon and nitrogen under irrigated continuous corn. *Soil Sci. Soc. Am. J.* 78:1987–1996. doi:10.2136/sssaj2014.04.0166
- Schoessow, K.A., K.C. Killian, and L.G. Bundy. 2010. Soybean residue management and tillage effects on corn yields and response to applied nitrogen. *Agron. J.* 102:1186–1193. doi:10.2134/agronj2010.0033
- Shapiro, C.S., R.B. Ferguson, G.W. Hergert, C.S. Wortmann, and D.T. Walters. 2009. Fertilizer suggestions for corn. EC117. Univ. of Nebraska–Lincoln Ext., Lincoln.
- Sims, A.L., J.S. Schepers, R.A. Olson, and J.F. Power. 1998. Irrigated corn yield and nitrogen accumulation response in a comparison of no-till and conventional till: Tillage and surface-residue variables. *Agron. J.* 90:630–637. doi:10.2134/agronj1998.00021962009000050011x
- Sindelar, A.J., J.A. Coulter, J.A. Lamb, and J.A. Vetsch. 2013. Agronomic responses of continuous corn to stover, tillage, and nitrogen management. *Agron. J.* 105:1498–1506. doi:10.2134/agronj2013.0181
- Varvel, G.E., K.P. Vogel, R.B. Mitchell, R.F. Follett, and J.M. Kimble. 2008. Comparison of corn and switchgrass on marginal soils for bioenergy. *Biomass Bioenergy* 32:18–21. doi:10.1016/j.biombioe.2007.07.003
- Wilhelm, W.W., J.M.F. Johnson, J.L. Hatfield, W.B. Voorhees, and D.R. Linden. 2004. Crop and soil productivity response to corn residue removal: A literature review. *Agron. J.* 96:1–17. doi:10.2134/agronj2004.0001
- Wortmann, C.S., R.N. Klein, and C.A. Shapiro. 2012. Harvesting crop residues. NebGuide G1846 revised. Univ. of Nebraska–Lincoln Ext., Lincoln.
- Wortmann, C.S., D.D. Tarkalson, C.A. Shapiro, A.R. Dobermann, R.B. Ferguson, G.W. Hergert, and D. Walters. 2011. Nitrogen use efficiency for three cropping systems in Nebraska. *Agron. J.* 103:76–84. doi:10.2134/agronj2010.0189